



Cabinet Agenda

Wyre Borough Council
Date of Publication: 21 November 2023
Please ask for: Marianne Unwin
Democratic Services Officer
Tel: 01253 887326

Cabinet meeting on Wednesday, 29 November 2023 at 6.00 pm in the Council Chamber, Civic Centre, Poulton-Le-Fylde

1. Apologies for absence

2. Declarations of interest

Members will disclose any pecuniary and any other significant interests they may have in relation to the matters to be considered at this meeting.

3. Confirmation of minutes

(Pages 3 - 8)

To approve as a correct record the Minutes of the meeting of the Cabinet held on Wednesday 18 October.

4. Public questions

To receive and respond to any questions from members of the public.

Public questions for Cabinet may be submitted at any time by writing to Democratic Services or via email democratic.services@wyre.gov.uk.

Public questions for this meeting must be received by noon on the Thursday before the meeting is held and do not need to specifically relate to items on this agenda. Questioners should provide their name and address and indicate to which Cabinet member the question is to be directed.

The total period of time allocated for public questions will not normally exceed 30 minutes.

5. Authorities Monitoring Report 2022-2023

(Pages 9 - 138)

Report of the Planning and Economic Development Portfolio Holder and Corporate Director Communities.

6. Exclusion of the public and press

In accordance with Paragraph 11 of the Access to Information Rules in Part 4 of the Council's Constitution, the Chief Executive has determined that the report submitted under item 7 of this agenda is "Not for Publication". This is because it refers to "exempt information" as defined in Part 1 of Schedule 12A(3) of the Local Government Act, 1972 as amended by the Local Government (Access to Information) Variation Order 2006, on the grounds that it contains information relating to the financial or business affairs of a particular person (including the authority holding that information).

If Cabinet decides to exclude the public and press for the next item, it will need to pass the following resolution:

"Cabinet resolves to exclude the public and press from the meeting whilst agenda item 7 is being considered as the item refers to exempt information as defined in category 1 (Information relating to any individual) of Part 1 of Schedule 12(a) of the Local Government Act 1972 as amended by the Local Government (Access to Information) Variation Order 2006 and the public interest in maintaining the exemption outweighs the public interest in disclosing the information..."

7. Review of the council's pay and conditions

Report of the Resources Portfolio Holder and the Chief Executive.

(Pages 139 -
144)



Cabinet Minutes

The minutes of the Cabinet meeting of Wyre Borough Council held on Wednesday, 18 October 2023 at the Council Chamber, Civic Centre, Poulton-Le-Fylde.

Cabinet members present:

Councillors Berry, McKay, Bowen, Bridge and Le Marinel

Absent- apologies received:

Councillor Vincent

Officers present:

Rebecca Huddleston, Chief Executive

Mark Billington, Corporate Director Environment

Marianne Hesketh, Corporate Director Communities

Clare James, Corporate Director Resources and Section 151 Officer

Marianne Unwin, Democratic Services and Scrutiny Manager (Temporary)

Daphne Courtenage, Democratic Services Officer

No members of the public or press attended the meeting.

CAB.13 Declarations of interest

None.

CAB.14 Confirmation of minutes

The minutes of the meeting of Cabinet held on 6 September 2023 were **confirmed** as a correct record by those who were in attendance.

Rebecca Huddleston, Chief Executive made an announcement regarding the minutes of a Cabinet meeting held on 27 March 2019.

The Chief Executive announced that under the Council's Constitution, she was responsible, together with the Monitoring Officer, for a system of record keeping for all the Authority's decisions. At the 27th of March 2019 Cabinet meeting, the then Chief Executive and the then Resources Portfolio Holder took a report on the Appropriation of Land at Bourne Hill, Fleetwood. This was recorded as item CAB.53 in the Agenda.

It recently came to light that a Land Registry reference in the report was

incorrect and in an effort to clarify this, the following footnote was added to both the minutes of the meeting and the summary on the website on 4 October 2023. The footnote included the following wording:

“The minutes of this meeting were edited in October 2023 to acknowledge a typo in the land registry title number of the Land at Bourne Hill, Fleetwood. This was due to a typing error at the time. The correct title is LAN34532 as shown on the title plan, Appendix 1 attached to the report within the agenda pack.”

This wording had led to some confusion as it incorrectly states that the minutes of the meeting were edited, which implied a change to the contemporary narrative content approved by Cabinet at the time. Rebecca reassured Cabinet that ordinarily, any change to the body of the minutes themselves would require a resolution to be passed by Cabinet itself.

Rebecca confirmed that no change had been made to the contemporary narrative content of the minutes of the Cabinet meeting on 27 March 2019. However, a clarification footnote concerning a reference number in item CAB.53 had been added. This was made to address an inaccuracy which the council was made aware of by a member of the public. The action was taken in order to fulfil the responsibilities of the Monitoring Officer and Chief Executive to ensure accurate records were kept.

Acknowledging that although the intention was to be helpful to the reader and address the concern raised by a member of the public, the wording and resulting misunderstanding could have been avoided. As such a review of the process was undertaken. The review found that while there was no specific guidance of how inaccuracies within report should be noted, best practice would have been to report this matter back to Cabinet, before adding the footnote.

Decision

Cabinet **agreed**:

- To approve the removal of the footnote which has been added to the minutes and the landing page on the website;
- To note the correct land registry title number for the Land at Bourne Hill, Fleetwood of LAN34532; and
- To note that a link to a clarification footnote will be added against item CAB.53 of the 27 March 2019 agenda to note the inaccuracy in the Land Registration number.

It was added that approval by the relevant committee would always be sought for any changes to documents approved by the committee, in line with guidance, and for addition of any footnote or link to a footnote, even for a very minor factual correction.

CAB.15 Public questions

None received.

CAB.16 Wyre Moving More Strategy

The Leisure, Health and Community Engagement Portfolio Holder and the Corporate Director Communities submitted a report to seek Cabinet's approval and endorsement of the Wyre Moving More Strategy 2023-2028.

Decision

Cabinet **agreed**:

To approve and endorse the Wyre Moving More Strategy 2023-2028.

CAB.17 Medium Term Financial Plan (annual report)

The Resources Portfolio Holder and the Corporate Director Resources (and S.151 Officer) submitted a report seeking Cabinet to consider the council's Medium Term Financial Plan for the financial years 2023/24 to 2027/28.

Decisions

Cabinet **agreed**:

- To consider the attached Medium Term Financial Plan and the consequential action required in order to address the issues resulting from the five year Financial Forecast (current year plus four years);
- To note the revised expenditure projections incorporating the slippage from 2022/23, and the resulting impact on the level of the council's Reserves and Balances at 31 March 2023; and,
- The top-up and use of all Reserves and Balances as indicated in Appendix 3 to the Medium Term Financial Plan.

CAB.18 Capital Programme Review and Monitoring Report (mid-year annual report)

The Resources Portfolio Holder and the Corporate Director Resources (and S.151 Officer) submitted a report seeking Cabinet to consider the review of the 2023/24 Capital Programme and progress of schemes for the five month period covering the period from April 2023 to 31 August 2023, undertaken by spending officers. Noting amendments to the Capital Programme since it was last reported to Cabinet and the financial impact over the term of the Programme, through to the end of 2027/28.

Decisions

Cabinet **agreed**:

- That the 2023/24 Capital Programme, and its funding, totalling

£18,027,390 be noted.

- That re-profiling of multi-year schemes detailed below are approved.
- That additional funds allocated to the capital programme through Portfolio Holder reports be noted.
- That the progress of, and expenditure incurred on, capital schemes for the first five months of the 2023/24 financial year be noted.

CAB.19 The Promotion of Self-Care and Social Prescribing in Wyre task group (final report)

The Corporate Director Resources and the Chair of the Promotions of Self-Care and Social Prescribing in Wyre Task Group submitted a report detailing the work of the Promotion of Self-Care and Social Prescribing in Wyre Task Group.

Councillor Bowen, Leisure, Health and Community Engagement Portfolio Holder, discussed the council's position regarding self-care and social prescribing in Wyre. She mentioned the relationship between social prescribing and the Wyre Moving More Strategy.

Decisions

Speaking on behalf of Cabinet, Councillor Bowen confirmed that Cabinet **accepted** and made comments on the following recommendations (numbered as per the report):

3.1 That the council continues to promote its ongoing work with its primary care networks, local GP practices and other link/community organisations; that the council supports these groups by continuing to advertise its services via different methods.

She stated that the council would continue to work with the Primary Care Networks, GPs and the voluntary care sector. She informed members of the formation of a new Fylde and Wyre Health and Wellbeing Partnership. She assured that this effort would be supported and promoted in the future.

3.2 That the council should ensure that its health and wellbeing services and offers are well promoted on its website and social media. The council's services and offers should also be specifically promoted to local NHS social prescribing teams. If and when an opportunity to refresh a local directory of services presents itself, it is recommended that the council supports this work.

The Wyre website and social media accounts would be reviewed to ensure that officers promoted services as widely as possible. She informed members that conversations with the NHS were progressing to ensure that suitable Wyre Council services were included in the service directory.

3.3 That the work of the council in relation to social prescribing be monitored by the Overview and Scrutiny Committee and be made a strategic priority.

She suggested that a project aimed at reducing loneliness and isolation be included in the new Council Plan, and that any future project be monitored annually by the Overview and Scrutiny Committee.

Councillors Bowen and Berry praised the task group for their efforts, as well as the officers who assisted the task group.

The meeting started at 6.00 pm and finished at 6.14 pm.

Date of Publication: 19 October 2023.

Options considered but rejected

Any alternative options that were considered but rejected, in addition to the reasons for the recommendations that were made, are included in the full reports.

When will these decisions be implemented?

All decisions will be put into effect five working days from the date of publication, unless a decision is “called-in” by any four members of the council within that period.

This page is intentionally left blank



Report of:	Meeting	Date
Councillor Peter Le Marinel, Planning Policy and Economic Development Portfolio Holder and Marianne Hesketh, Corporate Director Communities	Cabinet	29 November 2023

Authorities Monitoring Report 2022-2023
--

Key decision: Yes

1. Purpose of report

1.1 The purpose of the report is to consider and recommend the content of the Authorities Monitoring Report 2022-2023.

2. Corporate priorities

2.1 The Authorities Monitoring Report is the main mechanism for assessing the performance and effects of the adopted Local Plan. It forms a critical evidence document for the Local Plan for Wyre Council and can act as a trigger (if required) to undertake a review of the plan if necessary.

3. Recommendation

3.1 That subject to the inclusion of any minor editorial alterations, the Draft Authorities Monitoring Report 2022-2023 as set out in Appendix 1 be approved by Cabinet and made available for public inspection.

4. Background

4.1 The preparation of Annual Monitoring Reports ceased on 15 January 2012 when section 113 of the Localism Act came into force, amending section 35 of the Planning and Compulsory Purchase Act 2004. This removed the requirement for Annual Monitoring Reports to be made to the Secretary of State. However, councils are still required to prepare reports, now known as Authorities Monitoring Reports. The Act requires councils to publish this information direct to the public at least annually in the interests of transparency.

4.2 The Authorities Monitoring Report is the main mechanism for assessing the performance and effects of the adopted Local Plan. It forms a critical evidence document for the Local Plan for Wyre Council.

4.3 This is the 19th Authorities Monitoring Report for Wyre Council and the purpose therefore follows:

- To monitor key characteristics of Wyre as a wider contextual setting for Local Plan monitoring;
- To assess the planning policies of the Adopted Local Plan (2011-2031) (incorporating partial update of 2022), including their effectiveness and the impacts they have on the Borough; and
- To consider progress in terms of preparation of any planning policy documents set out in the Local Development Scheme (LDS) and any 'real time' subsequent updates on the council's website.

5. Key issues and proposals

5.1 The demographic structure of Wyre poses issues for the future. In particular, the ageing population and projected population growth have implications for housing and provision of services. 2021 Census data highlights a 3.9% increase in population since 2011. The total population of Wyre is 111,946.

5.2 The housing requirement figure for the Wyre Local Plan (2011-2031) (incorporating partial update of 2022) is 296 net dwellings per annum. The total housing requirement for the plan period is therefore a minimum of 7,384 net dwellings. This consists of 479 net dwellings between 2011 and 2018/19; and 296 net dwellings between 2019/20 and 2031.

5.3 In this monitoring period, there have been 719 housing completions, of which, 107 were affordable.

5.4 67% of new dwellings approved are within 1km of a GP surgery.

5.5 99% of new dwellings approved are within 1km of a primary school.

5.6 8% of new dwellings approved are within 1km of a secondary school.

5.7 89% of new dwellings approved are within 1km of an existing employment area (EP2).

5.8 73% of new dwellings approved are within 1km of a town, district, local and neighbourhood centre (EP4).

5.9 There have been no new completions in the Green Belt.

5.10 The average ground floor vacancy rate across town centres has increased slightly (by 0.93%) to 8.27%. Garstang has had a 5.61% increase in vacancies in a 12 month period. The highest vacancies

remain in both Fleetwood (12.99%) and Garstang (10.06%). Cleveleys recorded a vacancy rate of 8.06% and Poulton-le-Fylde 7.43%. Although not defined as a town centre in the Local Plan, Thornton recorded a vacancy rate of 2.83%.

- 5.11** There is 37.68ha of employment land available across Wyre, this includes 30.76ha of employment land that is available on allocated sites. The take up for the whole of Wyre for 2022/23 is 3.16ha, this includes 1.18ha on allocated sites.
- 5.12** There has been minimal loss (0.06ha) of green infrastructure through development. Policy HP9 required 6.15ha of green infrastructure to be provided across six sites. 4.76ha has been proposed on new developments, alongside proposed off-site contributions totalling £277,000.
- 5.13** There remains just one Air Quality Management Area (AQMA) in Wyre. Regulation 34 of the Town and County Planning (Local Planning) (England) Regulation 2012 requires local planning authorities to publish an Authorities Monitoring Report.
- 5.14** The Wyre Local Plan to 2031 included Policy LPR1 – Wyre Local Plan Review. This required the early partial review and update of the Wyre Local Plan with the objective of meeting the full objectively assessed housing needs over the plan period.
- 5.15** On 26 January 2023, Wyre Council adopted the Wyre Local Plan (2011–2031) (incorporating the partial update of 2022).

6. Alternative options considered and rejected

- 6.1** The Planning and Compulsory Purchase Act 2004 requires local authorities to produce the Authorities Monitoring Report at least once annually. Therefore, alternative options are not applicable in this instance as the planning policy team has a legal obligation to produce the report as set out in Appendix 1.

Financial, Legal and Climate Change implications	
Finance	There are no financial implications arising directly from this report.
Legal	Section 35 of the Planning and Compulsory Purchase Act 2004 requires the annual production and publication of an Authorities Monitoring Report by each plan making authority. Regulation 34 of the Town and Country Planning (Local Planning) (England) Regulations 2012 sets out the information that such a report must contain.

Climate Change	There are no climate change implications arising directly from this report as it is a factual update on the status of monitoring.
----------------	---

Other risks/implications: checklist

If there are significant implications arising from this report on any issues marked with a ✓ below, the report author will have consulted with the appropriate specialist officers on those implications and addressed them in the body of the report. There are no significant implications arising directly from this report, for those issues marked with a x.

risks/implications	✓ / x
community safety	x
equality and diversity	x
health and safety	x

risks/implications	✓ / x
asset management	x
ICT	x
data protection	x

Processing Personal Data

In addition to considering data protection along with the other risks/ implications, the report author will need to decide if a 'privacy impact assessment (PIA)' is also required. If the decision(s) recommended in this report will result in the collection and processing of personal data for the first time (i.e. purchase of a new system, a new working arrangement with a third party) a PIA will need to have been completed and signed off by Data Protection Officer before the decision is taken in compliance with the Data Protection Act 2018.

report author	telephone no.	email	date
Lily Duffy	01253 887210	Lily.duffy@wyre.gov.uk	01.11.2023

List of background papers:		
name of document	date	where available for inspection
None		

List of appendices

Appendix 1 – Draft Authorities Monitoring Report 2022-2023



Wyre Council
Wyre Local Plan Evidence Base

Authorities Monitoring Report
2022-2023

Copyright Notice

All maps and plans in this report are reproduced from Ordnance Survey material with the permission of Ordnance Survey on behalf of the Controller of His Majesty's Stationery Office © Crown Copyright. Unauthorised reproduction may lead to prosecution or civil proceedings. Wyre Borough Council Licence 10018720, 2023.

Due to the nature of the document, some information is not provided in an accessible format. An accessible version of the AMR is available upon request. Please contact planning.policy@wyre.gov.uk.

Table of contents

1	Introduction	8
1.1	The Authorities Monitoring Report	8
1.2	Wyre's Development Plan	8
1.3	Structure	8
1.4	Limitations	9
1.5	Other	10
2	Contextual (Background) Information	11
2.1	Introduction	11
2.2	Spatial Characteristics of Wyre	11
2.3	Current Population	12
2.4	Population Projections	12
2.5	Population Density	13
2.6	Migration and Natural Change	14
2.7	Ethnic composition	15
2.8	Index of Multiple Deprivation	16
2.9	Conclusion	16
3	Economic Growth (Objective 1)	18
3.1	Introduction	18
3.2	PMI1 & SAI6/3 - Available employment land, by area (ha)	18
3.3	PMI2 and PMI3- Amount of gross employment land (ha) and net floorspace (sqm) developed by type and with extant planning permission	19
3.4	PMI4 - Amount of gross employment land (Ha) and net floorspace (sqm) lost to alternative uses (non B use class)	20
3.5	PMI5 & SAI6/4 - Number of wards with LSOAs in bottom 10% most deprived for employment deprivation	21
3.6	SAI6/5 – Employment land take up	21
3.7	Indicator Analysis	21
3.8	Policy Conclusions	24
4	Infrastructure Provision (Objective 2)	25
4.1	Introduction	25
4.2	PMI6 - Number, type and amount of financial contributions through CIL and/or S106 towards education	25
4.3	PMI7 & SAI2/1 - Number and distribution of wards with LSOAs in the bottom 10% nationally for education, skills and training deprivation	25
4.4	SAI2/3 - % of working age residents with national vocational qualifications (NVQs)	25
4.5	SAI2/2 – Location and number of school places available	26
4.6	SAI6/1 – Employment and unemployment	27
4.7	SAI6/2 – Percentage of employment and occupation	28
4.8	Indicator Analysis	28
4.9	Policy Conclusions	31

- 5 Housing (Objective 3).....32**
- 5.1 Introduction 32
- 5.2 PMI8 - 5 year supply of deliverable housing 32
- 5.3 PMI9 - Housing Trajectory 33
- 5.4 PMI10 & SAI4/1 - Net additional dwellings on each housing allocation 34
- 5.5 PMI11 & SAI4/3 - Percentage and number of affordable homes, by type and settlement 35
- 5.6 PMI12 - Percentage and number of dwellings providing housing for older people and people with restricted mobility 36
- 5.7 PMI13 and SAI4/2 - Net additional dwellings, by size, type and tenure 37
- 5.8 PMI14 & SAI4/6 - Amount of permanent and transit pitch provision for gypsies and travellers 38
- 5.9 PMI15 & SAI4/7 - Amount of permanent plot provision for travelling show people 38
- 5.10 PMI16 - Number of buildings converted in to Houses of Multiple Occupancy (HMOs) 38
- 5.11 SAI4/5 - Percentage of vacant dwellings (C3) 38
- 5.12 Indicator Analysis 39
- 5.13 Policy Conclusions 42
- 6 Town, District and Local Centres (Objective 4)43**
- 6.1 Introduction 43
- 6.2 PMI5 and SAI6/4 - Number of wards with LSOAs in bottom 10% most deprived for employment deprivation 43
- 6.3 PMI17, PMI18 and SAI6/6 - Net additional retail floorspace developed and with extant planning permission 43
- 6.4 PMI19 - Changes to defined primary and secondary shopping frontages 43
- 6.5 PMI20 - Ground floor vacancy rates for Cleveleys, Fleetwood, Garstang, Poulton-le-Fylde and Thornton 43
- 6.6 Indicator Analysis 44
- 6.7 Policy Conclusions 46
- 7 Infrastructure Provision (Objective 5 and 6)47**
- 7.1 Introduction 47
- 7.2 PMI21 & SAI3/3 - Percentage of new dwellings approved within 1km of key services 47
- 7.3 PMI22 - Number, type and amount of financial contributions through CIL and/or S106 towards health care 47
- 7.4 PMI23 - Number, type and amount of financial contributions through CIL and/or S106 towards other infrastructure 48
- 7.5 PMI24 - Number of community facilities, by type and settlement 48
- 7.6 PMI25 & SAI3/5 - Length of total and new dedicated pedestrian and cycle routes 48
- 7.7 PMI26 - Number of developments receiving planning permission with agreed travel plan 49

7.8	PMI27 - Number, type and amount of financial contributions through CIL and/or S106 towards highways	49
7.9	PMI28 & SAI5/2 - Percentage and number of new dwellings built within 1km of a bus stop	49
7.10	Indicator Analysis	49
7.11	Policy Conclusions	52
8	Natural Environment and Heritage Assets (Objective 7)	53
8.1	Introduction	53
8.2	PMI29 & SAI8/1 - Number and change in areas of biodiversity, geological and landscape importance	53
8.3	PMI30 - Amount of new development within areas of biodiversity, geological and landscape importance	53
8.4	PMI31 & SAI8/2 - Condition of SSSIs	54
8.5	PMI32 & SAI8/3 - Number of Biological Heritage Sites (BHS) under active management	54
8.6	PMI33 - Loss of the best and most versatile agricultural land	54
8.7	PMI34 & SAI10/1 - Gain/Loss/Number of heritage assets	55
8.8	PMI35 & SAI10/2 – Number of scheduled monuments and listed buildings considered to be at risk	56
8.9	SAI8/4 – Areas of Ancient woodland	56
8.10	Indicator Analysis	56
8.11	Policy Conclusions	59
9	Spatial Development (Objective 8)	60
9.1	Introduction	60
9.2	PMI36 – Number of new developments (by type) in the Green Belt	60
9.3	PMI37 - Number of new developments (by type) in the Countryside	60
9.4	Indicator Analysis	60
9.5	Policy Conclusions	62
10	Green Infrastructure and Health (Objective 9)	63
10.1	Introduction	63
10.2	PMI38 & SAI5/3- Length of total and new dedicated public rights of way (PROW)	63
10.3	PMI39 & SAI9/2 - Number of total and new green flag status parks	63
10.4	PMI40 and SAI9/1 – Amount of Green Infrastructure lost to development (ha)	63
10.5	PMI41 - Amount of new green infrastructure (including public open space) provided through new development	63
10.6	PMI42 & SAI3/4 - Number of open space sites above 80% quality score	64
10.7	PMI43 & SAI3/2 - Number of wards with LSOAs in the bottom 10% most deprived for health deprivation	64
10.8	PMI44 - Number of Health Impact Assessments (HIA)	64
10.9	Life Expectancy	64

- 10.10 SAI3/1 - Percentage of resident population who consider themselves to be in good health 65
- 10.11 Indicator Analysis 66
- 10.12 Policy Conclusions 68
- 11 Climate Change (Objective 10)69**
- 11.1 Introduction 69
- 11.2 PMI45 - Per capita amount of CO₂ emissions in the LA area 69
- 11.3 PMI46 – New renewable energy installations, by type (Feed in tariff in Mega Watts) 70
- 11.4 PMI47 & SAI12/3 – Number of Electric Vehicle Charging Points (EVCP) 70
- 11.5 SAI12/1 – Local rail patronage 70
- 11.6 SAI12/2 – Indicators used to monitor the implementation of the Local Transport Plan 71
- 11.7 Indicator Analysis 71
- 11.8 Policy Conclusions 73
- 12 Environmental Impact (Objective 11).....74**
- 12.1 Introduction 74
- 12.2 PMI48 & SAI11/2 – Number of planning permissions granted contrary to Environment Agency advice in areas at risk from flooding 74
- 12.3 PMI49 – Number of planning permissions granted contrary to Environment Agency advice on water quality grounds 75
- 12.4 PMI50 – Upgrading of flood defences to 1 in 200 year standard 75
- 12.5 PMI51 – Number of planning permissions incorporating Sustainable Drainage Systems (SuDS) 75
- 12.6 PMI52 – Inappropriate development in the Coastal Change Management Area (CCMA) 76
- 12.7 PMI53 – Number, type and amount of financial contributions through CIL and/or S106 towards flood prevention 76
- 12.8 PMI54, SAI13/1 & SAI13/2 – Measure air pollutants within Air Quality Management Areas (AQMA) 76
- 12.9 PMI55 – Number of total and new AQMAs designated in the Borough 77
- 12.10 PMI56 & SAI11/3 – Bathing water quality 77
- 12.11 PMI57 – Number of planning permissions granted contrary to HSE advice 77
- 12.12 SAI11/1 – Rivers reaching Good Ecological Status (GES) 77
- 12.13 Indicator Analysis 79
- 12.14 Policy Conclusions 82
- 13 Society (Objective 12)83**
- 13.1 Introduction 83
- 13.2 PMI58 & SAI1/1 - Number and distribution of wards with LSOAs in the bottom 10% most deprived for crime deprivation 83
- 13.3 PMI59 & SAI5/1 - Number of LSOAs in the bottom 10% most deprived for barriers to housing and services provision deprivation 83

13.4	PMI60 & SAI4/4- Number and location of wards with LSOAs in the bottom 10% nationally for Living Environment deprivation	83
13.5	PMI61 & SAI6/4 - Number of wards with LSOAs in bottom 10% most deprived for income deprivation	83
13.6	PMI62 & SA1/2 - Crime rates per 1,000 of the population for key offences	83
13.7	Indicators Analysis	84
13.8	Policy Conclusions	86
14	Progress against the Local Development Scheme (LDS)	87
15	Progress against the Infrastructure Delivery Plan (IDP)	89
16	Duty to Co-operate	93
17	Neighbourhood Planning	96
18	Self-build and custom build housing	97
19	Brownfield Register	98
	Appendix A: Local Plan Policies	99
	Appendix B: Performance Monitoring Indicators (PMIs)	100
	Appendix C: Sustainability Appraisal Indicators (SAIs)	113
	Appendix D: Glossary of terms and abbreviations	120

1 Introduction

1.1 The Authorities Monitoring Report

1.1.1 The preparation of Annual Monitoring Reports ceased on 15 January 2012 when section 113 of the Localism Act came into force amending section 35 of the Planning and Compulsory Purchase Act 2004. This removes the requirement for annual monitoring reports to be made to the Secretary of state. However, councils are still required to prepare reports, known as ‘Authorities’ Monitoring Reports (AMR). This Act requires councils to publish this information direct to the public at least annually in the interests of transparency.

1.1.2 As a legislative requirement under Regulation 34 of the Town and Country Planning (Local Development) (England) Regulations 2012, the AMR is the main mechanism for assessing the performance and effects of Wyre’s Development Plan (also includes the Lancashire Minerals and Waste Development Framework but monitored by Lancashire County Council and therefore not monitored in this report) The AMR also monitors performance against – and the timescales set out in the Local Development Scheme (LDS) in relation to the review of the Local Plan and the preparation of other supplementary documents and guidance.

1.1.3 This is the 19th AMR for Wyre Borough and covers the period 1 April 2022 to 31 March 2023. The purpose is as follows:

- To monitor the key characteristics of Wyre as a wider contextual setting for Local Plan monitoring;
- To assess the planning policies of the Adopted Local Plan 2011-2031, including their effectiveness, and the impacts they have on the Borough in order to establish a baseline for future monitoring; and
- To consider progress in terms of preparation of any planning policy documents set out in the Local Development Scheme (LDS) and any ‘real time’ subsequent updates on the Council’s website.

1.2 Wyre’s Development Plan

1.2.1 The Development Plan for Wyre Council currently comprises the following documents:

- **Policies** included within Wyre Local Plan 2011-2031 (Incorporating Partial Update of 2022)
- The **Lancashire Minerals and Waste Development Framework** produced by Lancashire County Council.

1.3 Structure

1.3.1 In order to address these issues, the AMR is structured in the following manner.

1.3.2 Chapter 1 outlines the key messages of this AMR and Wyre’s Development Plan.

1.3.3 Chapter 2 monitors contextual information (e.g. population growth, age rates) for the district to review the baseline conditions in the borough to assess the extent that

the local plan spatial strategy is being delivered, remains appropriate and is sustainable.

1.3.4 Chapters 3 – 13 provide monitoring and analysis of the implementation of the Local Plan through the schedule of Performance Monitoring Indicators (PMI) and Sustainability Appraisal Indicators (SAI). These will provide an accurate indication of the performance against the Local Plan strategic objectives and the local plan policies having regard to a realistic assessment of the available sources to Wyre Council.

1.3.5 Chapter 14 reviews the progress made on preparing planning documents against the Local Development Scheme.

1.3.6 Chapter 15 reviews the progress against the Infrastructure Delivery Plan (IDP).

1.3.7 Chapter 16 outlines the Council's actions under the Duty to Cooperate requirements with neighbouring authorities.

1.3.8 Chapter 17 outlines the latest position regarding Neighbourhood Plans.

1.3.9 Chapter 18 outlines the latest position regarding Self-build and custom build housing.

1.3.10 Chapter 19 the latest position regarding Wyre Council's Brownfield Register.

1.4 Limitations

1.4.1 As part of the plan, monitor and manage approach, the indicators and targets will be reviewed throughout the plan period to assess their suitability and so they remain appropriate. Additional indicators may also be included in the AMR. It must be recognised that in relation to some indicators the impact of the local plan can only be determined after a number of years.

1.4.2 It should also be noted that for some applications which require legal agreements under S106 of the Town and Country Planning Act 1990 the official approval date is the date on which the permission is issued after the S106 agreement is signed and is not the date that the application was approved by the Planning Committee. This process can sometimes take several months before final permission can be granted. It is at that point when an application is considered as approved that it is included in the relevant AMR. Monies will only come forward upon certain triggers that are set out in the associated S106 agreement.

1.4.3 A number of gaps do still exist in monitoring information (this may be due to discontinued data) and additional monitoring may take place in the future to address this.

1.4.4 It should be noted that some of the sustainability appraisal indicators that were developed in the Wyre Local Plan (2011-2031) Sustainability Appraisal Report (Strategic Environmental Assessment and Sustainability Appraisal) August 2017 have been amended and/or removed to best fit the monitoring required for the local plan. SAIs may have not been included in this AMR due to overlaps in the indicators and new SAIs may be introduced during the plan period.

1.4.5 It must be noted that some figures included in this document do not include permitted developments or discharge of condition applications. It should therefore be assumed that some developments (i.e. change of use) have also been developed and are not included in this document.

1.4.6 Where there has been an application permitted which includes intensification of an existing employment site, i.e. an extension or additional floor to existing employment building, only net additional floorspace is recorded as the site area already exists and would be misrepresentative. Therefore, gross figures may be recorded as no take up or loss (0 hectares).

1.5 Other

1.5.1 At the end of each chapter, there is an indicator analysis section. Below sets out the system used to determine performance.

Green = Positive performance

Orange = Neither negative nor positive

Red = Negative performance / Action may be required

2 Contextual (Background) Information

2.1 Introduction

2.1.1 As well as monitoring the objectives and local plan policies, the AMR also monitors contextual information (e.g. population growth) for the district as a whole to review the baseline conditions in the borough to assess the extent that the local plan spatial strategy is being delivered and remains appropriate and is sustainable.

2.2 Spatial Characteristics of Wyre

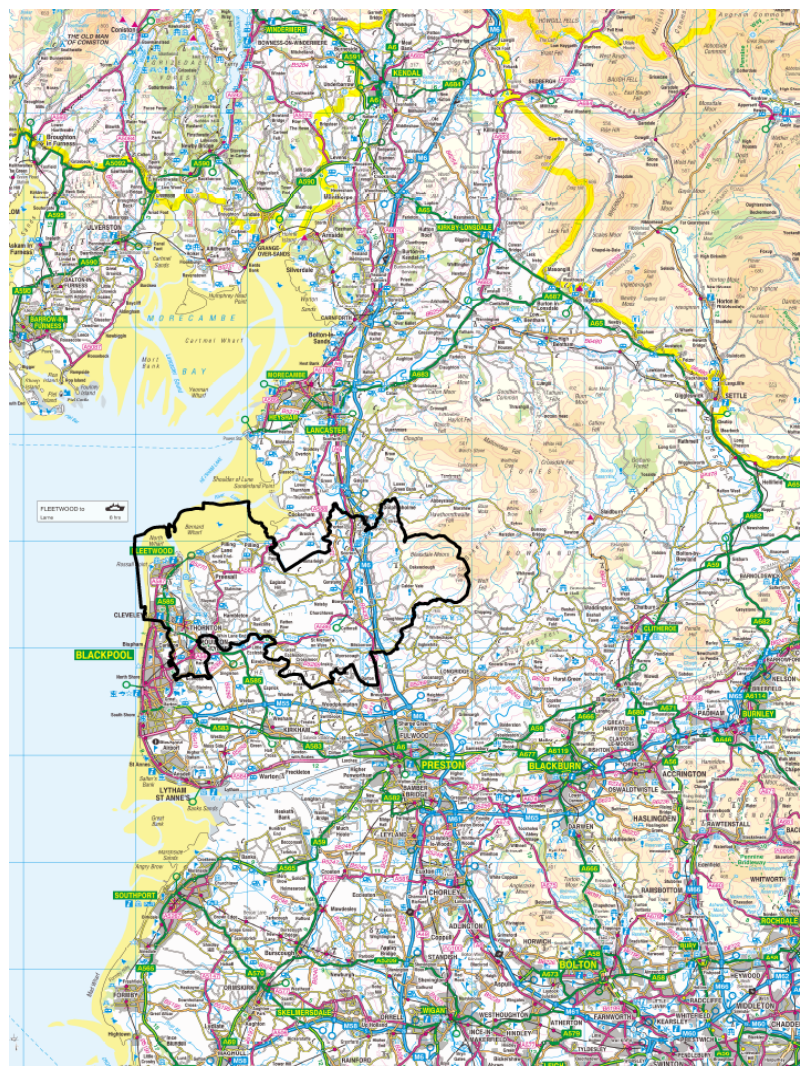
2.2.1 Wyre is a Lancashire coastal district bounded by the sea along parts of its western and northern boundaries. It shares a common land boundary with the City of Lancaster to the north, with the Boroughs of Ribble Valley, Preston and Fylde to the east and south respectively, and with Blackpool Unitary Authority along the remainder of its south western boundary.

2.2.2 Wyre itself is characterised by a distinct geographical polarity, with the urban areas concentrated in the west of the Borough, and an expanse of rural area to the East.

2.2.3 The urban area west of the River Wyre is on a peninsula situated in Morecambe Bay, and is comprised of the coastal towns of Fleetwood, Thornton, Cleveleys, and to the south, slightly inland, the market town of Poulton-le-Fylde.

2.2.4 The main rural area settlements of Wyre are the market town of Garstang, Great Eccleston, Catterall, Knott End-on-Sea, Preesall and Hambleton. The rural area is characterised by a large area of low-lying countryside and farmland scattered with small villages and hamlets, and

FIGURE 2.1: WYRE COUNCIL



east of the M6, the Bowland Fells which is designated an Area of Outstanding Natural Beauty (AONB).

2.3 Current Population

2.3.1 The population for Wyre is 111,946, representing a 3.9% increase from the 2011 Census figure of 107,749. This is smaller than the overall increase for Lancashire (5.5%) and England (6.6%). Population estimates are calculated through components on change against the previous year’s estimate. The components of change consist of the net difference of births/deaths and internal/international migration.

2.3.2 Wyre’s population age structure is somewhat different in comparison to Lancashire-14 (including Blackburn with Darwen and Blackpool), the North West and England. Figure 2.2 illustrates how Wyre’s population structure (2011 and 2021 Census) compares against Lancashire, the North West and England. Wyre has a larger proportion of residents over the age of 50 and lower proportions across all age groups under the age of 50. In comparison to the 2011 Census, the age groups have changed slightly; large decreases in age groups 15-19 and 40-49 and large increases in age groups 55-59 and 70-74.

Figure 2.2: Population Structure, 2011 and 2021 Census (ONS)



2.4 Population Projections

2.4.1 Table 2.1 shows the 2018-based population projection figures for Wyre, compared to regional and national figures. Wyre has a higher percentage rate of growth compared to Lancashire, and a similar rate of growth compared to the national figures. Wyre’s population is projected to increase to approx. 121,660 by the year 2040 (8.7% greater than the 2021 census).

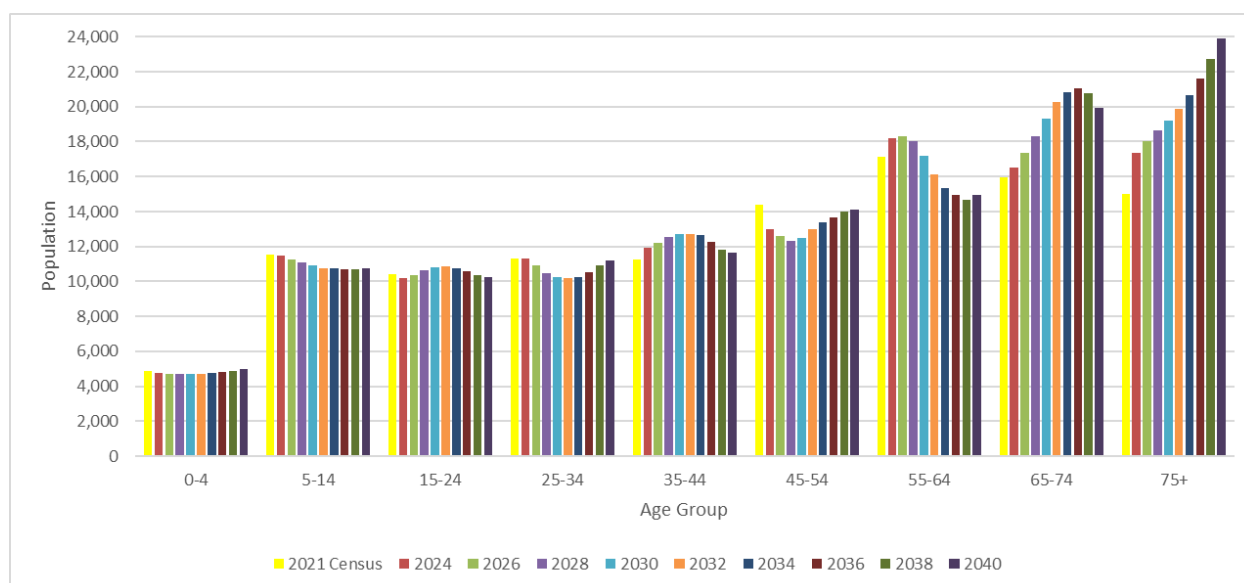
TABLE 2.1: LOCAL, REGIONAL AND NATIONAL POPULATION PROJECTIONS (ONS)

Population projection (thousands) with % change

Year	Wyre		Lancashire		North West		England	
	Population	% Increase	Population	% Increase	Population	% Increase	Population	% Increase
2024	114,740		1,244,648		7,481,035		57,816,890	
2026	115,755	0.88	1,254,291	0.77	7,532,383	0.69	58,297,244	0.83
2028	116,741	0.85	1,263,142	0.71	7,581,231	0.65	58,751,651	0.78
2030	117,659	0.79	1,271,144	0.63	7,627,756	0.61	59,181,798	0.73
2032	118,514	0.73	1,278,492	0.58	7,672,351	0.58	59,592,225	0.69
2034	119,349	0.70	1,285,125	0.52	7,715,545	0.56	59,988,992	0.67
2036	120,148	0.67	1,291,570	0.50	7,758,353	0.55	60,377,815	0.65
2038	120,928	0.65	1,297,908	0.49	7,801,681	0.56	60,766,253	0.64
2040	121,660	0.61	1,304,353	0.50	7,845,715	0.56	61,157,868	0.64

2.4.2 As shown in Figure 2.3, Wyre's population is also projected to age considerably by the year 2040, especially the 75+ age group which has a significant projected increase of approx. 8,862 (representing a 59% increase when compared to the 2021 census). The age group 65-74 is also expected to increase considerably by approx. 3,964 (25%). The projections also indicate that the age groups 0-4 and 35-44 are set to increase slightly. Age groups 5-14, 15-24 and 25-34 are expected to decrease slightly and the 55-64 age group is expected to see a significant decrease of approx. 2,211 (representing a 13% decrease when compared to the 2021 census).

Figure 2.3: 2018-based Population Projections compared to Census 2021 (ONS)



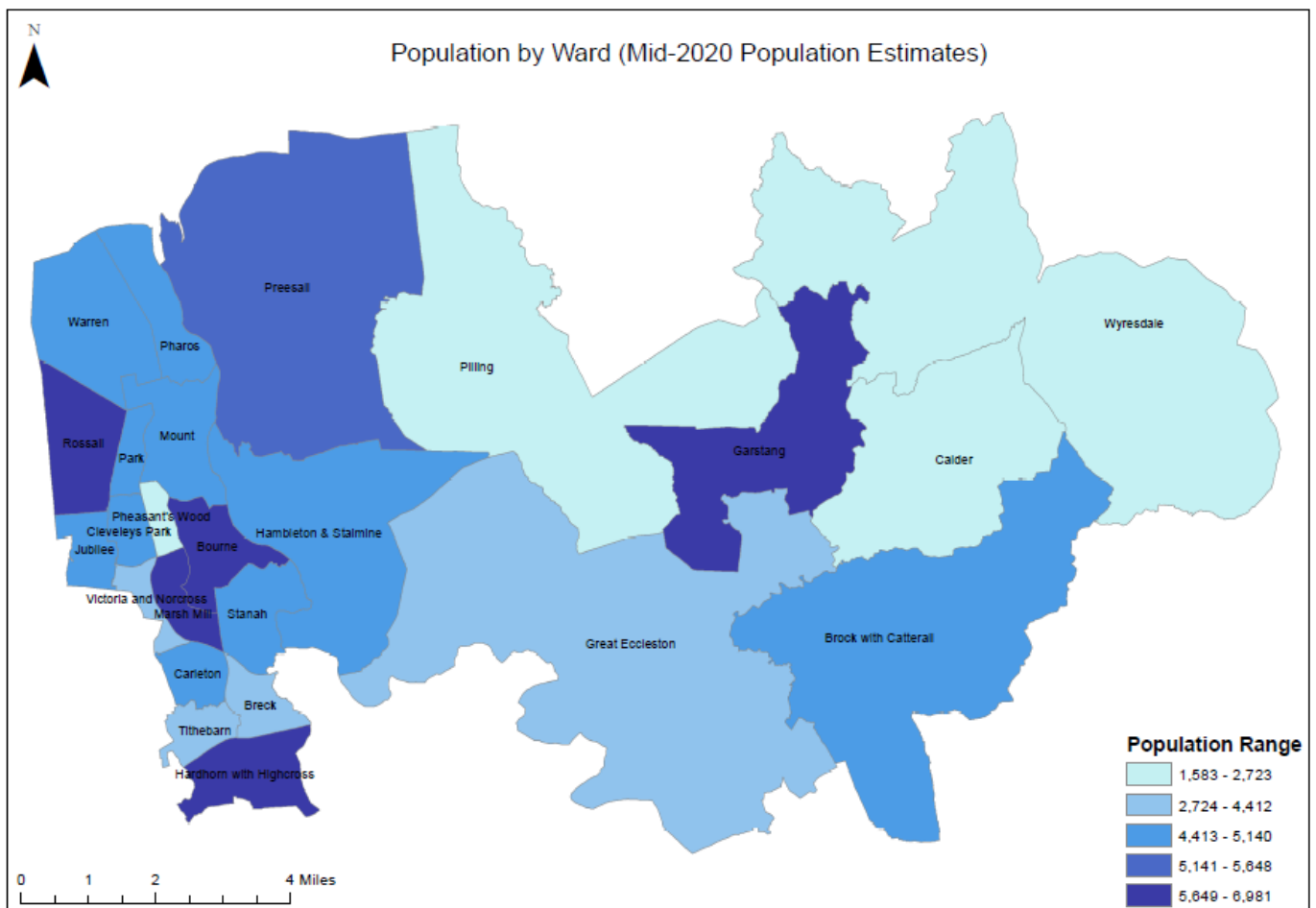
2.5 Population Density

2.5.1 Table 2.2 illustrates that Wyre has a lower population density (Census 2021) compared to regional and national population densities. However, it must be noted that the population density in Wyre is unevenly distributed as illustrated in Figure 2.4. Most of the population is concentrated in the urban areas of Fleetwood, Cleveleys, Thornton and Poulton-le-Fylde and the market town of Garstang.

TABLE 2.2: POPULATION DENSITY OF WYRE, CENSUS 2021 (ONS)

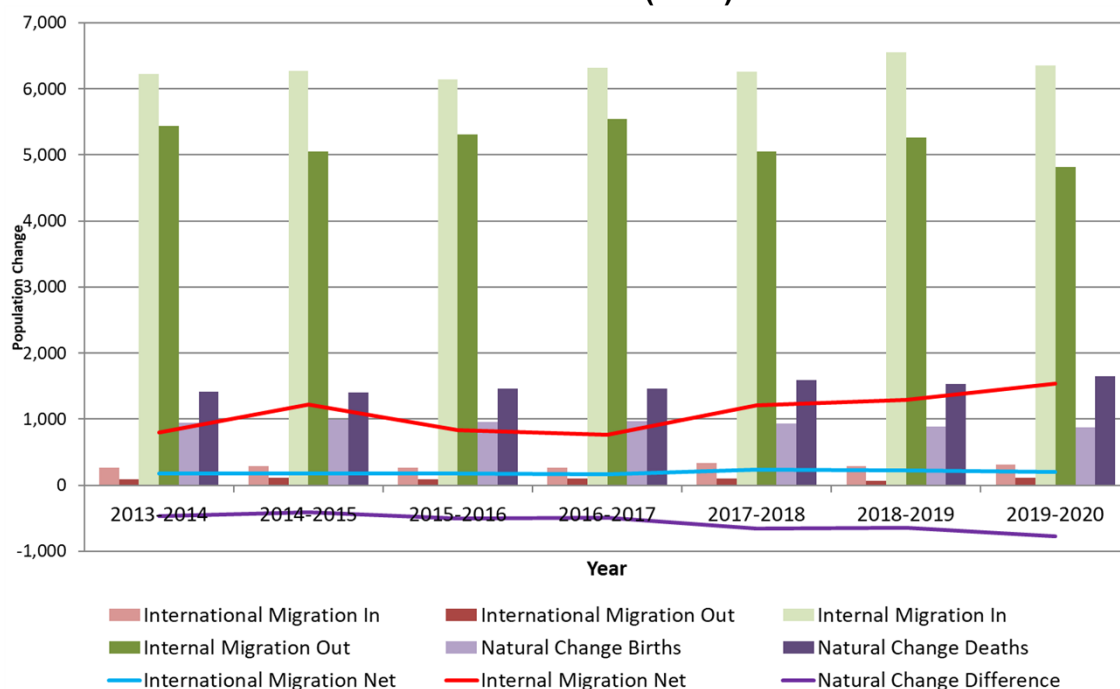
	Wyre	Lancashire	North West	England
Population	111,946	1,235,300	7,417,300	56,489,800
Area (sq. km.)	282	2,894	14,108	130,311
Population per sq. km.	397	427	526	434

FIGURE 2.4: POPULATION BY WARD IN WYRE, MID-2020 (ONS)



2.6 Migration and Natural Change

2.6.1 Figure 2.5 illustrates the rate of international and internal-migrants and the difference of natural change within Wyre since 2013 to 2020. In 2020, there was a total net gain of 1,737 in-migrants. Of that, 89% have moved from somewhere within the UK, and 11% from overseas.

FIGURE 2.5: INTERNATIONAL AND INTERNAL MIGRATION AND NATURAL CHANGE IN WYRE, 2013-2020 (ONS)

2.6.2 Whilst overall there has been a net gain through in-migration, when considered in conjunction with fertility and mortality rates, the rate of in-migration has some implications. The mid-2020 data shows there were 870 births in Wyre, and 1,645 deaths (ONS). There have been no updates to the data since 2020 due to the dataset being discontinued.

2.7 Ethnic composition

2.7.1 As Table 2.3 illustrates, Wyre has a much less ethnic diverse population when compared to Lancashire, the North West and England. The 2021 census indicated that Wyre has a higher proportion of white residents than in Lancashire, the North West and England. Although the ethnic diversity in Wyre was estimated to have increased slightly by 2021, the white population in Wyre remains at 16.5% higher than in England. All other groups in Wyre have a lower proportion when compared both regionally and nationally.

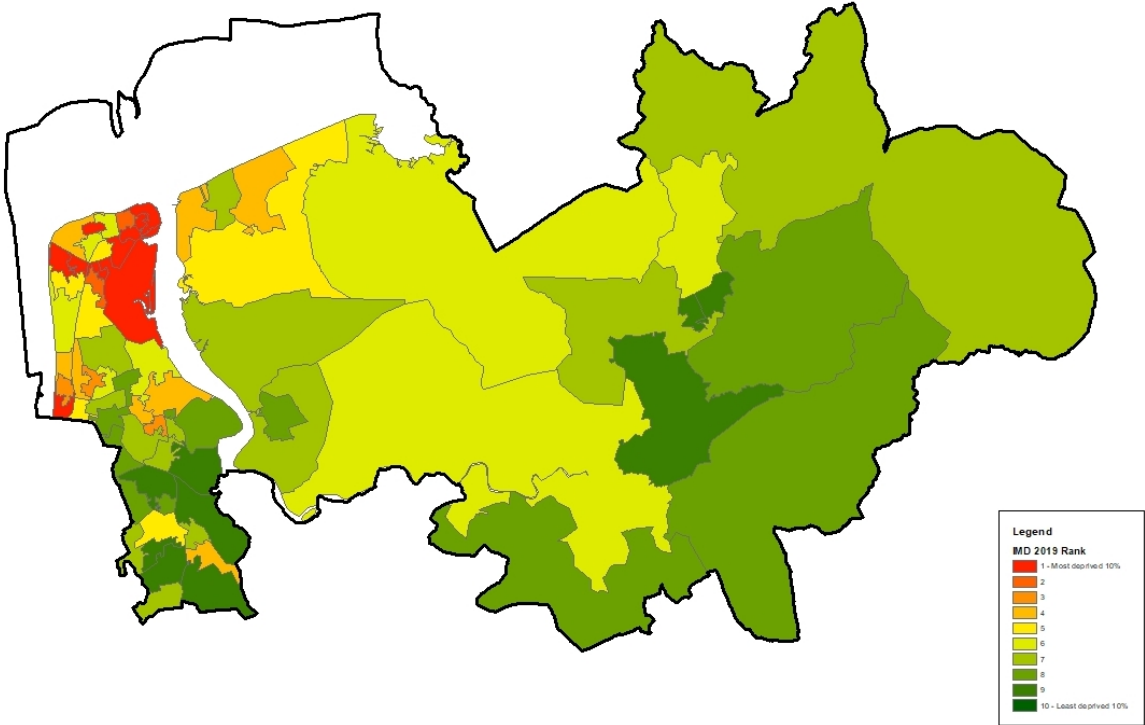
TABLE 2.3: ETHNIC COMPOSITION (%), 2021 CENSUS COMPARED WITH THE 2011 CENSUS (ONS)

Ethnic Group	Wyre		Lancashire		North West		England	
	2011	2021	2011	2021	2011	2021	2011	2021
White	98.2	97.5	92.3	88.9	90.2	85.6	85.4	81.0
Mixed/multiple ethnic group	0.6	1.0	1.1	1.6	1.6	2.2	2.3	3.0
Asian/Asian British	0.9	1.0	6.1	8.1	6.2	8.4	7.8	9.6
Black/African/Caribbean/Black British	0.1	0.2	0.3	0.6	1.4	2.3	3.5	4.2
Other ethnic group	0.1	0.3	0.2	0.7	0.6	1.5	1.0	2.2

2.8 Index of Multiple Deprivation

2.8.1 The Index of Multiple Deprivation (IMD) is a measure of the relative deprivation of areas at the Lower Super Output Area (LSOA) level. The concept is based on the idea of seven distinct domains of deprivation, which are experienced by individuals living in an area. The IMD is a weighted aggregation index of the relative deprivation of an area.

FIGURE 2.6: INDICES OF MULTIPLE DEPRIVATION (ALL IMD DOMAINS) FOR WYRE, LOWER SUPER OUTPUT AREAS BY RANKING POSITION IN ENGLAND, 2019 (MHCLG)



2.8.2 Spatially, there is an inequality between urban and rural parts of the borough, with the more deprived areas being found exclusively in the urban areas. Figure 2.6 shows that whilst much of Wyre ranks in the least deprived areas of England with some areas, such as Garstang and parts of Poulton-le-Fylde, Thornton and Cleveleys ranking in the least deprived 10%. Several areas in Fleetwood are ranked amongst the most deprived 10% in England.

2.9 Conclusion

2.9.1 This chapter has outlined the key demographic issues for Wyre in terms of population and the need to monitor socio-cultural issues.

2.9.2 Wyre’s population is projected to both increase and become considerably more aged over the coming years. This will have implications for the provision of housing and the necessary services. With the population ageing there will be a greater demand for local health services and service provision, and with large parts of the Borough being rural, there is the potential for greater need of transportation services. With the younger population projected to decrease, namely 5-34 year olds, this will bring new

challenges that will have to be addressed especially in terms of retaining businesses and employment opportunities.

2.9.3 In order to support the principles of sustainable development but also ensure that the development needs of the population of Wyre are met, a new settlement hierarchy was established as part of the Local Plan (adopted February 2019). The new settlement hierarchy is broadly in the form of a traditional hierarchy where the highest populated areas are at the higher end of the spectrum. As part of the Local Plan preparation, Wyre Council undertook a detailed settlement analysis to support the settlement hierarchy in the adopted Local Plan.

2.9.4 The overarching aim is to promote sustainable growth whilst balancing environmental, social and economic considerations and creating sustainable communities in both urban and rural Wyre.

3 Economic Growth (Objective 1)

3.1 Introduction

This chapter provides an accurate indication that objective 1 of the Local Plan is being implemented correctly and successfully and monitors the performance of policies SP1, SP2, EP1, EP2, EP3 and EP8. These are monitored using the following Performance Monitoring Indicators (PMI); PMI1, PMI2, PMI3, PMI4 and PMI5. Sustainability Appraisal Indicators (SAI) are also used where appropriate. The Local Plan policies can be viewed in Appendix A, PMI's can be viewed in Appendix B and SAI's in Appendix C.

Objective 1 states:

'To facilitate investment, job creation and sustainable economic growth in Wyre, supporting new and existing businesses across the Borough, the delivery of Hillhouse Technology EZ, farming and tourism development.'

3.1.1 Economic growth and performance are indicators of development, employment and industry policies implemented by Wyre Council. Sustainable economic growth and diversity is encouraged through national policy in order to enhance the vitality of urban centres, and facilitate diversification. As the term sustainable development suggests, the need or desire for growth must not be detrimental to quality of life and the environment.

3.1.2 The Town and Country Planning (Use Classes) (Amendments) (England) Regulations 2020 came into effect on 1st September 2020. Use classes B1 no longer exists and a new class E (commercial, business and service) has been created. This subsumes A1 (shops), A2 (financial and professional services), A3 (restaurants and cafes) and B1 (business). The new use class E includes sub-category Class E(g) which corresponds with the previous use class B1. Use Class B2 and B8 remain.

3.1.3 For the purposes of employment monitoring, we will continue to monitor use class B2 and B8. alongside the new use class E(g).

3.1.4 The data contained within this chapter remains from the 2022-23 report.

3.2 PMI1 & SAI6/3 - Available employment land, by area (ha)

3.2.1 Table 3.1 illustrates the available employment land on allocated sites in Wyre. As can be seen, there is a total of 30.76ha of available employment land available on allocated sites in Wyre.

Table 3.1: Available employment land on allocated sites

Site Reference	Site Name	Hectares (ha) available
SA2/1	Carrfield Works, Park Lane, Preesall Hill	0.34
SA2/2	Riverside Industrial Park Extension, Catterall	3.42
SA2/3	South of Goose Lane	1.00
SA3/1	Fleetwood Dock and Marina, Fleetwood	6.32
SA3/2	Joe Lane, Catterall	0.00

Site Reference	Site Name	Hectares (ha) available
SA3/3	Land West of Great Eccleston, Great Eccleston	1.00
SA3/4	Forton Extension, Forton	1.00
SA3/5	Land West of the A6, Garstang	4.68
SA4	Hillhouse Technology Enterprise Zone, Thornton	13.00
Total Employment land available on allocated sites		30.76

3.2.2 In addition to this, there is also a total of 6.92ha of committed employment land on unallocated sites. Therefore, the overall employment land available across Wyre totals 37.86 ha (gross).

3.3 PMI2 and PMI3- Amount of gross employment land (ha) and net floorspace (sqm) developed by type and with extant planning permission

3.3.1 Table 3.2 indicates there has been 1.18ha take up (completions) on Allocated Sites.

Table 3.2 - Gross employment land and net floorspace developed

Allocation (employment area)	Gross Take Up (Ha)	Gross Take Up (Sqm)					Total Net Take Up (sqm)
		E(g)(i)	E(g)(ii)	E(g)(iii)	B2	B8	
SA3/1	1.18	0	0	0	4,764	0	4,764
Total	1.18	0	0	0	4,764	0	4,764

3.3.2 Table 3.3 indicates there has been 0ha (zero) of new land take up in Existing Employment Areas, with four developments totalling 2021 sqm (WY07, WY08, WY22 & WY24) provided through intensification of an existing site.

Table 3.3: Existing employment areas

Existing Employment Area	Gross Take Up (Ha)	Gross Take Up (Sqm)					Total Net Take Up (sqm)
		E(g)(i)	E(g)(ii)	E(g)(iii)	B2	B8	
Red Marsh Industrial Estate (WY07)	0	0	0	0	527	260	407
Copse Road (WY08)	0	0	0	0	0	672	0
Green Lane West (WY22)	0	0	0	0	0	942	942
Brockholes Way (WY24)	0	0	0	0	0	482	0
Total	0	0	0	0	527	2,356	1,349

3.3.3 Table 3.4 indicates there has been zero (0) take up on Hillhouse Technology Enterprise Zone.

Table 3.4: Hillhouse Technology Enterprise Zone

Hillhouse Technology Enterprise Zone	Gross Take Up (Ha)	Gross Take Up (Sqm)					Total Net Take Up (sqm)
		E(g)(i)	E(g)(ii)	E(g)(iii)	B2	B8	
-	-	-	-	-	-	-	-
Total	0	0	0	0	0	0	0

3.3.4 Table 3.5 indicates there has been 1.98ha take up (completions) on other sites in Wyre.

Table 3.5: Other sites

No. of Sites	Gross Take Up (Ha)	Gross Take Up (Sqm)					Total Net Take Up (sqm)
		E(g)(i)	E(g)(ii)	E(g)(iii)	B2	B8	
8	1.98	127	16	204	3,317	1,110	4,274

3.4 PMI4 - Amount of gross employment land (Ha) and net floorspace (sqm) lost to alternative uses (non B use class)

3.4.1 Table 3.6 indicates the amount of gross employment land (Ha) and net floorspace (sqm) lost to alternative uses (non B use class) where data is available through monitoring planning permissions.

3.4.2 There has been 1.83ha of employment land lost to alternative uses and 5,276 net square metres lost to alternative uses. There have been two sites where there has been a change of use within B class and one site where there has been a redevelopment within B class that results in a net loss.

3.4.3 However, the councils monitoring of planning permissions may not illustrate all losses that have occurred, such as where planning permission is not required e.g. permitted change of use.

Table 3.6: Gross employment and net floorspace lost to alternative uses (non B use class)

Application Number	Reference (if applicable)	Gross Loss (Ha)	Net Gross Loss (Ha)	Loss (gross sqm)					Total Loss (net sqm)
				E(g)(i)	E(g)(ii)	E(g)(iii)	B2	B8	
20/00945/DEM	SA4	1.8	1.8	0	0	0	4,733	0	4,733
21/01307/FUL	WY24	0	0	0	0	0	770	0	288
22/00779/FUL	N/A	0.03	0.03	0	0	0	255	0	255
Total		1.83	1.83	0	0	0	5,758	0	5,276

3.5 PMI5 & SAI6/4 - Number of wards with LSOAs in bottom 10% most deprived for employment deprivation

3.5.1 From 2019 data, there were a total number of six (6) wards with LSOAs in the bottom 10% most deprived for employment deprivation. Wards include: Rossall, Warren, Pharos, Mount, Park and Jubilee.

3.6 SAI6/5 – Employment land take up

3.6.1 Table 3.7 indicates the gross employment land take up. As can be seen, the total take up is at 20.58ha. The take up for 2022-23 is 3.16ha.

Table 3.7: Employment land take up

Year	Allocated Sites	Existing Employment Areas (Unallocated Sites)	Other (Unallocated Sites)	Total Take Up (Ha)
2011-12	2.74	0	0.02	2.76
2012-13	0	0	1.75	1.75
2013-14	0	0	0.40	0.40
2014-15	0	0.1	0.7	0.80
2015-16	0.84	0.35	0	1.19
2016-17	0.23	1.07	1.05	2.35
2017-18	0.46	0	2.90	3.36
2018-19	0	3.58	0.09	3.67*
2019-20	0	0	0.51	0.51
2020-21	0	0.1	0	0.1
2021-22	0	0	0.53	0.53
2022-23	1.18	0	1.98	3.16
Total	5.45	5.2	9.93	20.58

*Completions revised for 2018-19 due to a completion reporting delay.

3.7 Indicator Analysis

3.7.1 Table 3.8 illustrates how local plan policies perform against indicators, where possible, comparing data from the previous year and where targets have been set out by the council.

Table 3.8: Economic Growth (Objective 1) Indicator Performance Analysis

Policies	Indicator	Description	Comparator / Target	2021/22 Output	2022/23 Output	Performance
SP1 SP2	PMI 1 SAI 6/3	Available employment land, by area (ha)	Monitor availability	Data not available	37.68ha	N/A
EP1 EP2 EP3 EP8	PMI 2	Amount of gross employment land (ha) and net floor space (sqm) developed, by type: a) on allocated employment sites (including mix use) b) in existing employment areas c) Hillhouse Technology Enterprise Zone d) Other	43 hectares (over plan period)	Data not available	a) 1.18ha, 4764sqm b) Zero (0)ha, 1349sqm c) Zero (0) d) 1.98ha, 4274sqm	Amber
	PMI 3	Amount of gross employment land (ha) and net floor space (sqm) with extant planning permission, by type: a) on allocated employment sited (including mix use) b) in existing employment areas c) Hillhouse Technology Enterprise Zone d) Other	To meet requirements	Data not available	Data not available	N/A
	PMI 4	Amount of gross employment land (ha) and net floor space (sqm) lost to alternative uses (non B use class): a) on allocated employment sites (including mix use) b) in existing employment areas	No overall loss	Data not available	Please see para 3.4.1	Red

Policies	Indicator	Description	Comparator / Target	2021/22 Output	2022/23 Output	Performance
		c) Hillhouse Technology Enterprise Zone d) Other				
	PMI 5 SAI 6/4	Number of wards with LSOAs in bottom 10% most deprived for employment deprivation	Decrease over plan period	6 Wards	6 Wards	Green
	SAI 6/5	Employment land take up	43 ha over plan period	Data not available	3.16ha	Amber

3.8 Policy Conclusions

3.8.1 The 2022-23 report outlines that it is evident that the policies associated are not performing in terms of economic growth, as targets are set for the duration of the plan period. If the average per annum is taken into consideration, there is still under-delivery. However, during a future single monitoring year, there could be significant over-delivery to compensate for previous years deficits. Thus, potentially could mean targets can still be achieved.

3.8.2 Wyre Council's retail and employment monitoring is currently under review and subject to change because of the Town and Country Planning (Use Classes) Order 1987 (as amended).

3.8.3 At present, policies are not performing sufficiently in order to facilitate sustainable economic growth in Wyre.

4 Infrastructure Provision (Objective 2)

4.1 Introduction

This chapter provides an accurate indication that objective 2 of the Local Plan is being implemented correctly and successfully and monitors the performance of policies SP1 and SP7. These are monitored using the following Performance Monitoring Indicators (PMI); PMI6 and PMI7. Sustainability Appraisal Indicators (SAI) are also used where appropriate. The Local Plan policies can be viewed in Appendix A, PMI's can be viewed in Appendix B and SAI's in Appendix C.

Objective 2 states:

'To support education and skill development to give local people the opportunity to access jobs.'

4.2 PMI6 - Number, type and amount of financial contributions through CIL and/or S106 towards education

4.2.1 The Community Infrastructure Levy (CIL) is a new charge that local authorities have the power to levy on most types of development to fund infrastructure required to support new growth such as transport, education, health and open space facilities. CIL chargers are based on the size and types of development proposed and are calculated as a charge per square metre.

4.2.2 Wyre council does not at present have an adopted CIL Charging Schedule. Therefore, there are currently no financial contributions through CIL within Wyre.

4.2.3 As part of the consideration of a planning application, section 106 of the Town and Country Planning Act 1990 enables local authorities to negotiate with developers certain works, restrictions, or contributions towards a range of infrastructure and services, such as community facilities, public open space, transport improvements and/or affordable housing.

4.2.4 There was one financial contribution proposed towards education during the period 1 April 2022 to 31 March 2023. This totalled approximately £91,552.68 through S106 towards education.

4.3 PMI7 & SAI2/1 - Number and distribution of wards with LSOAs in the bottom 10% nationally for education, skills and training deprivation

4.3.1 From 2019 data, there were a total number of six (6) wards with LSOAs in the bottom 10% most deprived for education, skills and training deprivation. Wards included; Rossall, Warren, Pharos, Mount, Park and Jubilee.

4.4 SAI2/3 - % of working age residents with national vocational qualifications (NVQs)

4.4.1 Table 4.1 illustrates the number and % of working age residents with NVQs during the time period January 2021 to December 2021.

Table 4.1: Wyre Residents with National Vocational Qualifications, Jan 2021- Dec 2021 (ONS)

	Wyre (Number)	Wyre (%)	North West (%)	Great Britain (%)
NVQ4 and above	24,400	41.8	38.5	43.5
NVQ3 and above	41,700	71.3	58.1	61.5
NVQ2 and above	51,500	88.1	77.3	78.2
NVQ1 and above	57,200	97.7	87.3	87.6

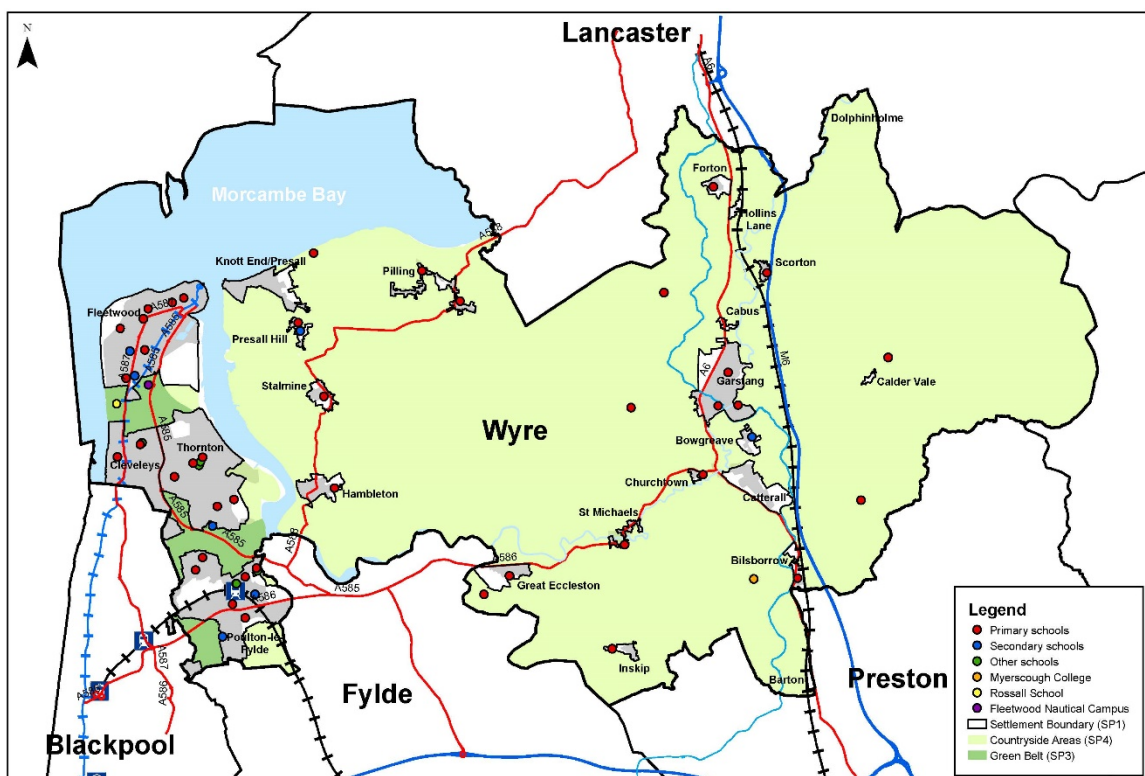
It must be noted that numbers and percentage are for those aged 16-64. Percentage is a proportion of resident population of area aged 16-64.

4.4.2 Data is not available for January 2022 to December 2022.

4.5 SAI2/2 – Location and number of school places available

4.5.1 Figure 4.1 illustrates the location of primary, secondary, and other schools, as well as identifying Myerscough College, Rossall School and Fleetwood Nautical Campus. There are 42 primary schools, 7 secondary schools and 6 other schools.

Figure 4.1: Location of schools in Wyre



This map is reproduced from Ordnance Survey material with the permission of Ordnance Survey on behalf of the Controller of His Majesty's Stationery Office © Crown copyright. Unauthorised reproduction in full or in part is prohibited. Wyre Council Licence Number: 10018730 2022.

4.5.2 The Lancashire “School Place Provision Strategy 2022-2025”¹ outlines the short, medium and long-term delivery strategy for Lancashire schools, in order to ensure the right number of school places, in the right areas, at the right time to meet need.

4.5.3 . Table 4.2 below summaries its findings for Wyre.

4.5.4 The strategy outlines areas of growth and reduction in need for both primary and secondary areas. It outlines the following for primary areas:

- Fleetwood – Area of reduction
- Calder Vale & Claughton - Area of reduction
- Garstang & surrounding area – Hotspot
- Poulton-le-Fylde – Hotspot

Table 4.2: Delivery, Phase and summary of contribution (LCC)

Delivery	Phase	Summary of contribution
Short Term	Primary	N/A
Short Term	Secondary	N/A
Medium Term	Primary	N/A
Medium Term	Secondary	N/A
Long Term: Local Plans	Primary	New primary school sites are being sought in the Garstang area, Thornton Cleveleys, Great Eccleston and Poulton-Le-Fylde to address demand from new housing.
Long Term: Local Plans	Secondary	Education contributions are being sought for existing secondary school expansions in conjunction with multiple developments in Wyre

4.6 SAI6/1 – Employment and unemployment

4.6.1 Table 4.3 illustrates Wyre’s employment and unemployment figures between April 2022 and March 2023. As can be seen, Wyre has a lower percentage (67.8%) of economically active people than both regional (76.5%) and national figures (78.4%).

¹ Lancashire School Place Provision Strategy 2022-2025

<https://www.lancashire.gov.uk/council/strategies-policies-plans/children-education-and-families/school-place-provision-strategy/>

Table 4.3: Employment and unemployment in Wyre, North West and Great Britain, April 2022 – March 2023 (ONS)

	Wyre	Wyre (%)	North West (%)	Great Britain (%)
Economically Active*	45,300	67.8	76.5	78.4
In employment*	42,400	63.1	73.6	75.5
Employees*	37,400	57.9	65.6	66.0
Self Employed*	5,000	5	7.7	9.2
Unemployed (aged 16 and over)	2,100	4.7	3.9	3.6

*numbers are for those aged 16 and over, % are for those aged 16-64.

4.7 SAI6/2 – Percentage of employment and occupation

4.7.1 Table 4.4 illustrates Wyre's employment by occupation between April 2022 and March 2023. As can be seen, Wyre had a higher percentage for groups 1, 3, 4, and 5 than the region and when compared to the national figures.

Table 4.4: Employment and occupations in Wyre, April 2022 – March 2023 (ONS)

	Wyre	Wyre (%)	North West (%)	Great Britain (%)
Soc 2010 Major Group 1-3	25,500	60.1	49.8	51.5
1) Managers, Directors and senior officials	7,000	16.4	10.0	10.8
2) Professional Occupations	9,900	23.3	25.5	26.3
3) Associate Professional & Technical	8,700	20.4	14.1	14.2
Soc 2010 Major Group 4-5	8,700	20.6	18.3	18.6
4) Administrative & Secretarial	4,700	11.0	10.4	9.6
5) Skilled Trades Occupations	4,100	9.6	7.8	9.0
Soc 2010 Major Groups 6-7	4,900	11.6	15.4	14.4
6) Caring, Leisure and other Service Occupations	3,400	8.1	8.5	8.1
7) Sales and Customer Service	!	!	6.8	6.3
Soc 2010 Major Group 8-9	#	#	16.5	15.4
8) Process Plant & Machine Operatives	1,900	4.4	6.4	5.8
9) Elementary Occupations	1,400	3.3	10.0	9.6

indicates data not available

! Estimate is not available since sample size is disclosive.

4.8 Indicator Analysis

4.8.1 Table 4.5 illustrates how local plan policies perform against indicators, where possible, comparing data from the previous year and where targets have been set out by the council.

Table 4.5: Infrastructure Provision (Objective 2) Indicator Performance Analysis

Policies	Indicator	Description	Comparator / Target	2021/22 Output	2022/23 Output	Performance
SP1 SP7	PMI 6	Number, type and amount of financial contributions through CIL and/or S106 towards education	Monitor contributions	£785,621.58	£91,552.68	N/A
	PMI 7 SAI 2/1	Number and distribution of wards with LSOAs in the bottom 10% nationally for education, skills and training deprivation	Decrease	6 Wards	6 Wards	Green
	SAI2/3	% of working age residents with national vocational qualifications (NVQs)	Monitor change	97.7%	N/A	N/A
	SAI2/2	Location and number of school places available	Monitor change	See table 4.2.	See table 4.2.	N/A
	SAI6/1	Employment and unemployment	Monitor change	In employment = 48,100 Unemployed = 1,900	In employment = 42,400 Unemployed = 2,100	N/A

Policies	Indicator	Description	Comparator / Target	2021/22 Output	2022/23 Output	Performance
	SAI6/2	Percentage of employment and occupation	Monitor change	See para 4.7.1	See para 4.7.1	N/A

4.9 Policy Conclusions

4.9.1 The number of wards with LSOAs in the bottom 10% nationally for education, skills and training deprivation has not decreased, however, the data is released on a 4-year cycle, and so a conclusion cannot be drawn until the next release.

4.9.2 The number of people in employment has decreased. There has also been an increase in the number of people who are unemployed. Wyre has a higher percentage of people in managerial and professional occupations than the regional and national figures.

4.9.3 It is evident that the development plan (SP1) is providing opportunities for local people to access jobs. Financial contributions (SP7) are also ensuring that education needs are being supported locally. Policies will be continually reviewed. It will become more evident in coming years as policies have had time to be fully implemented and established.

5 Housing (Objective 3)

5.1 Introduction

This chapter provides an accurate indication that objective 3 of the Local Plan is being implemented correctly and successfully and monitors the performance of policies SP1, SP2, SP7, HP1, HP2, HP3, HP7, HP8 and HP10. These are monitored using the following Performance Monitoring Indicators (PMI); PMI8, PMI9, PMI10, PMI11, PMI12, PMI13, PMI14, PMI15 and PMI16. Sustainability Appraisal Indicators (SAI) are also used where appropriate. The Local Plan policies can be viewed in Appendix A, PMI’s can be viewed in Appendix B and SAI’s in Appendix C.

Objective 3 states:

‘To help meet the needs of all Wyre’s population; provide choice in terms of type and tenure in both market and affordable sectors that meet the requirements of young people, families and older people.’

5.2 PMI8 - 5 year supply of deliverable housing

5.2.1 In accordance with the National Planning Practice Guidance (PPG)² and National Planning Policy Framework (NPPF) §74, the council will need to be able to demonstrate a 5 year housing land supply position (with a 5% buffer) when dealing with applications and appeals. The latest available evidence on housing delivery is that set out in the council’s Housing Monitoring Report (HMR) 2023.

5.2.2 The council’s HMR demonstrates a deliverable housing land supply position of **11.38 years**. Table 5.1 outlines the calculation.

Table 5.1 - 5 Year housing land supply calculation

Five year housing supply calculation	Number of dwellings
A. Five year requirement (296 x 5)	1,480
B. Completions since 1 April 2011	4,958
C. Shortfall since 2011 [(479 x 8) + (296 x 4) – 4,958]	58
D. 58 ÷ 8 years remaining of plan period	7.25
E. Annual requirement (7.25) x 5 years	36.25
F. Five year requirement with shortfall (1,480 + 36.25)	1,516.25

² ‘Housing Supply and Delivery’ Paragraph: 004 Reference ID: 68-004-20190722

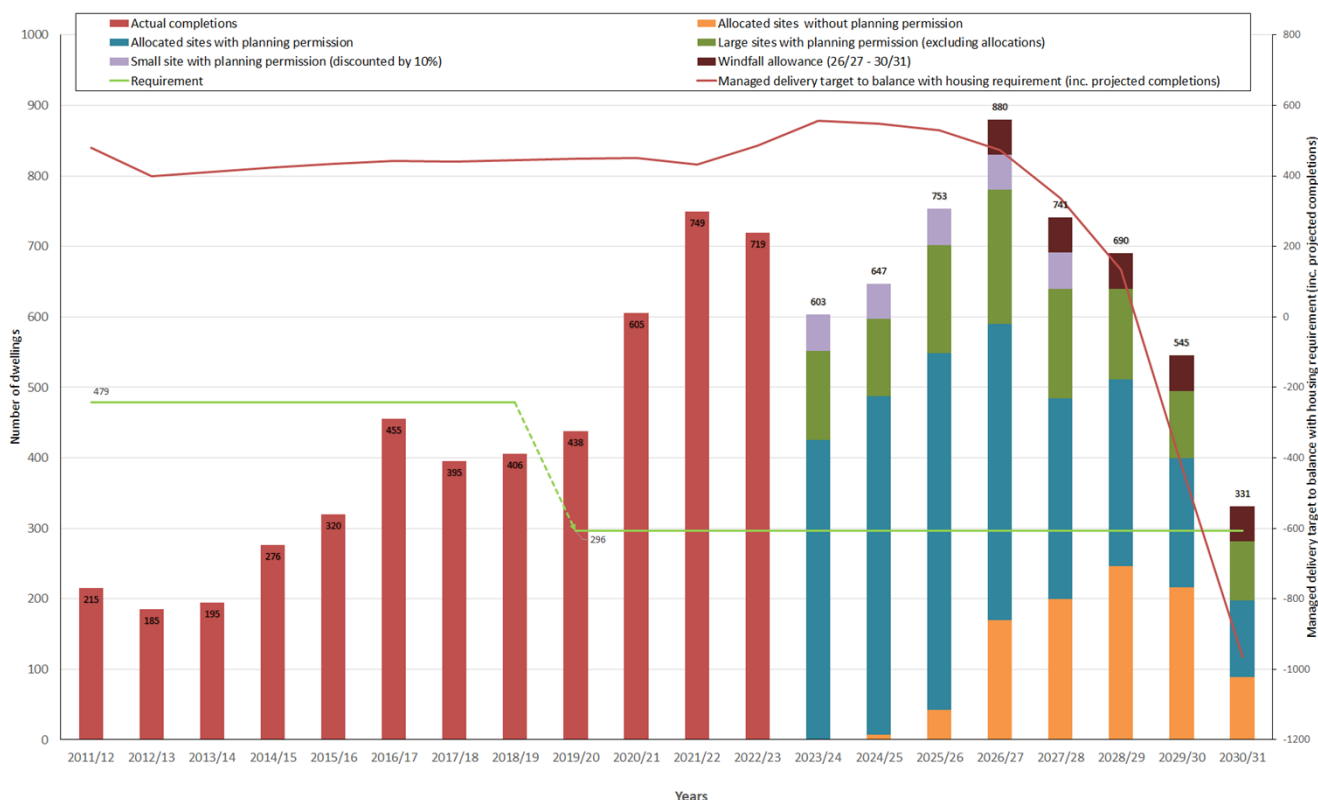
Five year housing supply calculation	Number of dwellings
G. 5% buffer (1,516.25 x 5%)	75.81
H Five year requirement with shortfall + 5% buffer (1,516.25 +75.81)	1,592.06
I. Annual five year requirement (1,592.06 ÷ 5 years)	318.41
J. Total supply deliverable in 5 years	3,624
K. Supply in years (3,624 ÷ 318.41)	11.38 years

5.2.3 Further information can be found on the council website here - <https://www.wyre.gov.uk/evidence-monitoring-information/housing-evidence/3>

5.3 PMI9 - Housing Trajectory

5.3.1 Figure 5.1 illustrates that there has been 4,958 net housing completions since 2011 and 719 in the year 2022-2023.

Figure 5.1: Housing Trajectory at 31st March 2023



5.4 PMI10 & SAI4/1 - Net additional dwellings on each housing allocation

5.4.1 The total net additional dwellings built in Wyre between 1 April 2011 and 31 March 2023 was 4,958. In the year 1 April 2022 to 31 March 2023 there were 719 new dwellings completed.

5.4.2 Table 5.2 identifies net additional dwellings on each housing allocation as at 31 March 2023. This table does not include mixed use sites.

Table 5.2: Net additional dwellings on housing allocations

Site Ref	Site Name	Number of dwellings allocated to be delivered by 2031	Number of dwellings expected to be delivered by 2031	Number of dwellings with extant permission at 31.03.23	Dwellings completed as at 31.03.23
SA1/1	West of Broadway, Fleetwood	25	25	44	0
SA1/2	Lambs Road/Raikes Road, Thornton	360	360	157	122
SA1/3	Land between Fleetwood Rd North and Pheasant Wood, Thornton	153	153	0	0
SA1/4	South East Poulton, Poulton-le-Fylde	236	236	208	0
SA1/5	Land at Garstang Road, Poulton-le-Fylde	516	516	522	316
SA1/6	Land South of Blackpool Road, Poulton-le-Fylde	300	300	290	44
SA1/7	South Stalmine, Stalmine	180	180	293	81
SA1/8	North of Garstang Road, Pilling	40	40	40	36
SA1/9	North of Norcross Lane, Norcross	300	300	332	185
SA1/10	Land at Arthurs Lane, Hambleton	165	165	201	17
SA1/11	Inskip Extension, Inskip	85	85	85	71
SA1/12	North of New Holly Hotel and Bodkin Cottage, Hollins Lane	38	38	38	38
SA1/13	Land East of Hollins Lane, Hollins Lane	51	51	60	60
SA1/14	West of Cockerham Road, Garstang	260	260	0	0

Site Ref	Site Name	Number of dwellings allocated to be delivered by 2031	Number of dwellings expected to be delivered by 2031	Number of dwellings with extant permission at 31.03.23	Dwellings completed as at 31.03.23
SA1/15	Land South of Prospect Farm, West of the A6, Garstang	70	70	70	17
SA1/16	South of Kepple Lane, Garstang	125	125	120	51
SA1/17	Bowgreave House Farm, Bowgreave	27	27	27	27
SA1/18	Garstang Road, Bowgreave	46	46	46	46
SA1/19	Land South of Calder House Lane, Bowgreave	45	45	44	44
SA1/20	Garstang Country Hotel and Golf Course, Bowgreave	95	95	87	80
SA1/21	Daniel Fold Farm, Daniel Fold Lane, Catterall	117	117	130	130
SA1/22	Daniel Fold Farm Phase 2, Daniel Fold Lane, Catterall	66	66	80	4
SA1/23	Land off Garstang Road, Barton	72	72	74	69
SA1/24	Land Rear of Shepherds Farm, Barton	34	34	34	0
SA1/25	Land Rear of 867 Garstang Road, Barton	26	26	0	0
Total		3,432	3,432	2,982	1,438

5.5PMI11 & SAI4/3 - Percentage and number of affordable homes, by type and settlement

5.5.1 The total number of affordable home completions in 2022-23 was 120 gross/107 net.

5.5.2 Table 5.3 illustrates sites that have contributed to the affordable housing completions. The table shows gross figures.

Table 5.3: Sites contributing to affordable housing completions 2022-23

		Units completed	No. of beds			
			1	2	3	4
1357A SA1/5	Garstang Road East, Poulton	28		24	4	
2260A SA4	Former Football Club, Bourne Road, Thornton	3		1	2	
2261B	North of Bourne Road, Thornton	20		8	12	
2702 SA1/21	Daniel Fold Farm PH.1 Daniel Fold Lane, Catterall	3			3	
2726A SA1/2	East of Lambs Road, Thornton	10		6	4	
2736B SA1/11	South of Preston Road, Inskip	6		3	3	
2771 SA1/23	Land off Garstang Road, Barton	12		3	9	
2815 SA1/6	Blackpool Road, Poulton	14		5	9	
2818 SA1/15	Prospect Farm, A6, Garstang	12		6	6	
2975	Former Sandpiper PH, Cleveleys Avenue, Cleveleys	12	3	9		
	Totals	120	3	65	52	0

5.5.3 There was one financial contribution proposed during the period 1 April 2022 to 31 March 2023. This totalled approximately £139,485.00 through S106 towards affordable housing.

5.6 PMI12 - Percentage and number of dwellings providing housing for older people and people with restricted mobility

5.6.1 By 2040, the population aged 65 or over in Wyre is projected to reach 43,828, the largest number of any Lancashire authority. It is therefore essential to provide housing for older people and people with restricted mobility.

5.6.2 Policy HP2 of the adopted Local Plan advises at least 20% of dwellings within developments of 20 dwellings and above should be of a design suitable or adaptable for older people and people with restricted mobility. 2022-23 has been the fourth full

monitoring year since the original adoption of the Local Plan (February 2019) and 6 planning applications have been approved in that time for developments of 20 dwellings and above.

5.6.3 All six of the approvals are required to provide by condition at least 20% housing suitable for the elderly and people with restricted mobility and three provided more than required (100%, 31.8% and 22.5%). In addition, during 2022-23, Planning Committee resolved to approve one further application with a recommendation to attach a planning condition for the provision of at least 20% housing suitable for the elderly and people with restricted mobility.

5.6.4 In total in 2022-23, planning approval was granted on developments of 20 dwellings and above for 170 dwellings for older people and people with restricted mobility.

5.7 PMI13 and SAI4/2 - Net additional dwellings, by size, type and tenure

5.7.1 Local plan policy HP2 states that proposed developments should provide an appropriate mix of housing in terms of size, type, tenure of housing, in accordance with the most up-to-date Strategic Housing Market Assessment and Rural Affordable Housing Needs Survey.

5.7.2 Table 5.4 demonstrates the size and tenure of the 719 net completions in 2022-2023 against the implied size of housing required, as set out in the Fylde Coast SHMA Addendum 3 (published May 2018).

Table 5.4: Net additional dwellings by type and tenure

Market Housing					Affordable Housing					Total Housing (regardless of tenure)				
1 bed	2 bed	3 bed	4/4+ bed	Total	1 bed	2 bed	3 bed	4/4+ bed	Total	1 bed	2 bed	3 bed	4/4+ bed	Total
89	141	156	226	612	3	56	48	0	107	92	197	204	226	719
Actual size provided (%)										13%	27%	28%	32%	100%
SHMA Addendum 3 implied size of housing required (%)										7%	31%	43%	18%	100%

5.7.3 With reference to the type of housing completed in the monitoring period, Table 5.5 illustrates the variety in the 719 net completions.

Table 5.5: Variety of net completions

Dwelling Type	Number of completions in 2022-23
Detached	294
Semi Detached	119

Dwelling Type	Number of completions in 2022-23
Terraced	85
Flat	173
Bungalow	48
Total	719

5.8 PMI14 & SAI4/6 - Amount of permanent and transit pitch provision for gypsies and travellers

5.8.1 No need has been identified in Wyre for Gypsy and other type of traveller accommodation.

5.9 PMI15 & SAI4/7 - Amount of permanent plot provision for travelling show people

5.9.1 Travelling show people have specific accommodation requirements. The evidence showed that the Local Plan needed to make provision for 20 plots to meet accommodation needs for Travelling Show People for the period up to 2031. Policy SA6 allocated land at North Garstang for travelling show people.

5.9.2 This allocation, SA6, Land at Conway, West of the A6, Garstang, has 2.43 hectares available and has a capacity of 20 plots. The site is now occupied by Travelling Show people.

5.10 PMI16 - Number of buildings converted in to Houses of Multiple Occupancy (HMOs)

During the monitoring period, there was one planning permission granted to convert a building into a HMO. For more details, please see planning permission 23/00069/FUL.

5.11 SAI4/5 - Percentage of vacant dwellings (C3)

5.11.1 Table 5.6 illustrates that in 2022, 905 homes in Wyre were vacant, representing 1.7% of the total dwelling stock. This is lower than the Lancashire (3.1%) and England (2.7%) figures.

5.11.2 Wyre had 95 more vacant dwellings compared to 2021 (810). This equates to an 11.7% increase in vacant dwellings.

Table 5.6: Vacant dwellings (C3) in Wyre, Lancashire and England (DLUHC)

	Wyre		Lancashire-12		England	
	No.	% Dwellings Vacant	No.	% Dwellings Vacant	No.	% Dwellings Vacant
Empty Homes	905	1.7	17,449	3.1	676,304	2.7

5.12 Indicator Analysis

5.12.1 Table 5.7 illustrates how local plan policies perform against indicators where possible, comparing data from the previous year and where targets have been set out by the council.

Table 5.7: Housing (Objective 3) Indicator Performance Analysis

Policies	Indicator	Description	Comparator / Target	2021/22 Output	2022/23 Output	Performance
SP1 SP2 SP7	PMI 8	5 year supply of deliverable housing	100% as set out in the latest Housing Evidence	6.74 years	11.38 years	Green
HP1 HP2 HP3 HP4 HP8 HP10	PMI 9	Housing Trajectory a) completions in previous years (since 2011) b) completions in reporting year c) extant planning permission from current year (up to 2031) d) managed delivery target	9,215 homes in the plan period (2011-2031)	a) 4,239 b) 749 (net) c) 693 (current year) see graph for future years d) 6,057	a) 4,958 b) 719 c) 603 (current year) see graph for future years d) 5,190	Green
	PMI 10 SAI 4/1	Net additional dwellings on each housing allocation a) completions since 2011 b) with extant planning permission	Monitor take up	a) 1,029 b) 2,540	a) 1,859 b) 2,695	N/A
	PMI 11 SAI 4/3	Percentage and number of affordable homes, by type and settlement a) completed annually (net) b) with extant planning permission c) financial contributions	Measure % against local plan policy standards, by settlement	a) 268 b) N/A c) £170,705.46	a) 107 b) N/A c) £139,485.00	Amber
	PMI 12	Percentage and number of dwellings providing housing for older people and people with restricted mobility	20% of 20+ dwellings	See para 5.6.2 (21/22 report)	See para 5.6.2	Green
	PMI 13 SAI 4/2	Net additional dwellings, by size, type and tenure	Monitor change	See para 5.7.2 (21/22 report)	See para 5.7.2	N/A
	PMI 14 SAI 4/6	Amount of permanent and transit pitch provision for gypsies and travellers	Monitor take up	No need identified	No need identified	N/A

Policies	Indicator	Description	Comparator / Target	2021/22 Output	2022/23 Output	Performance
	PMI 15 SAI 4/7	Amount of permanent plot provision for travelling show people	To meet locally identified need	20 plots	20 plots delivered	N/A
	PMI 16	Number of buildings converted in to Houses of Multiple Occupancy (HMOs)	Monitor take up	1	1	N/A
	SAI 4/5	Percentage of vacant dwellings (C3)	Decrease	1.5% (810 dwellings)	1.7% (905 dwellings)	Red

5.13 Policy Conclusions

5.13.1 Wyre can again demonstrate a 5-year housing land supply. The authority has provided 719 new homes, 107 of which are affordable homes, and has met the annual requirement of 296 homes. This confirms that policies are being implemented correctly to ensure the needs of the population are being met.

5.13.2 It is also promising to see that allocated sites are continuing to come forward across Wyre, with 1,859 dwellings already delivered and extant permission to deliver 2,695 homes thus far on housing allocations.

5.13.3 For more detailed housing monitoring and information, it is advised to review other evidence base documents, which outline Wyre Council's up to date housing position. Further information can be found here - <https://www.wyre.gov.uk/homepage/36/evidence-monitoring-and-information>

6 Town, District and Local Centres (Objective 4)

6.1 Introduction

This chapter provides an accurate indication that objective 4 of the Local Plan is being implemented correctly and successfully and monitors the performance of policies SP2, EP4, EP5, EP6, EP7 and EP8. These are monitored using the following Performance Monitoring Indicators (PMI); PMI 5, PMI17, PMI 18, PMI 19 and PMI 20. Sustainability Appraisal Indicators (SAI) are also used where appropriate. The Local Plan policies can be viewed in Appendix A, PMI's can be viewed in Appendix B and SAI's in Appendix C.

Objective 4 states:

'To help meet the diverse needs for services and facilities, as close to where they arise as possible, and ensure thriving and vibrant town, district and local centres serving the local community and visitors.'

6.2 PMI5 and SAI6/4 - Number of wards with LSOAs in bottom 10% most deprived for employment deprivation

6.2.1 From 2019 data, there were a total number of six (6) wards with LSOAs in the bottom 10% most deprived for employment deprivation. Ward include: Rossall, Warren, Pharos, Mount, Park and Jubilee.

6.3 PMI17, PMI18 and SAI6/6 - Net additional retail floorspace developed and with extant planning permission

6.3.1 This indicator will be introduced during the plan period as and when data becomes available. Retail monitoring is currently under review.

6.4 PMI19 - Changes to defined primary and secondary shopping frontages

6.4.1 Changes to defined primary and secondary shopping frontages will only be determined once future retail monitoring takes place. Future AMRs will identify changes.

6.4.2 Therefore, there have been no changes to defined primary and secondary shopping frontages.

6.5 PMI20 - Ground floor vacancy rates for Cleveleys, Fleetwood, Garstang, Poulton-le-Fylde and Thornton

Table 6.1 compares town centre vacancy rates between January 2022 and January 2023. As can be seen, there has been a decrease in the vacancy rate for Cleveleys and Thornton but an increase in the other focus areas. The average has increased (0.93%).

Table 6.1: Ground floor vacancy rates in Wyre, 2022-2023

Town Centre	January 2022 Vacancy Rate (%)	January 2023			Vacancy Rate Difference
		Total Units	Empty	Vacancy Rate (%)	
Cleveleys	8.31	360	29	8.06	-0.25
Fleetwood	11.76	254	33	12.99	1.23
Garstang	4.45	159	16	10.06	5.61
Poulton-le-Fylde	6.47	175	13	7.43	0.96
Thornton	5.66	106	3	2.83	-2.83
Average	7.34	N/A	N/A	8.27	0.93

6.6 Indicator Analysis

6.6.1 Table 6.2 illustrates how local plan policies perform against indicators, where possible, comparing data from previous year and where targets have been set out by the council.

Table 6.2: Town, District and Local Centres (Objective 4) Indicator Performance Analysis

Policies	Indicator	Description	Comparator / Target	2021/22 Output	2022/23 Output	Performance
SP2	PMI 5 SAI 6/4	Number of wards with LSOAs in bottom 10% most deprived for employment deprivation	Decrease over plan period	6 Wards	6 Wards	Green
EP4 EP5 EP6 EP7 EP8	PMI 17 SAI 6/6	Net additional retail floorspace developed, by type: a)in town centres b)in primary shopping areas c)in district, local and neighbourhood centres d)other	Monitor take up	Data not available	Data not available	N/A
	PMI 18 SAI 6/6	Net additional retail floorspace with extant planning permission a)in town centres b)in primary shopping areas c)in district, local and neighbourhood centres d)other	Monitor take up	Data not available	Data not available	N/A
	PMI 19	Changes to defined primary and secondary shopping frontages	Monitor change	No Change	No Change	N/A
	PMI 20	Ground floor vacancy rates for Cleveleys, Fleetwood, Garstang, Poulton-le-Fylde and Thornton	Monitor change	Average = 7.34	Average = 8.27	Red

6.7 Policy Conclusions

6.7.1 The number of wards with LSOAs in the bottom 10% most deprived for employment deprivation remains at 6 wards. This is not an accurate reflection of the policies as the data is released on a 4-year cycle and the latest release was in September 2019.

6.7.2 Wyre Council's retail and employment monitoring is currently under review and subject to change because of changes to the Town and Country Planning (Use Classes) Order 1987 (as amended). There have not been any changes to the primary and secondary shop frontages which is promising in that it shows these particular policies are being implemented correctly.

6.7.3 Vacancy rates have increased in Fleetwood, Garstang and Poulton-le-Fylde, but decreased in Cleveleys and Thornton. We remain cautious when monitoring these policies due to the uncertainty with the economy. Policies remain under review with the hopes of ensuring thriving and vibrant towns, districts and local centres to serve the local community and visitors.

7 Infrastructure Provision (Objective 5 and 6)

7.1 Introduction

This chapter provides an accurate indication that objectives 5 and 6 of the Local Plan is being implemented correctly and successfully and monitors the performance of policies SP1, SP2, SP7, SP8, CDMP3, CDMP6 and EP11. These are monitored using the following Performance Monitoring Indicators (PMI); PMI21, PMI22, PMI23, PMI24, PMI25, PMI26, PMI27, and PMI28. Sustainability Appraisal Indicators (SAI) are also used where appropriate. The Local Plan policies can be viewed in Appendix A, PMI's can be viewed in Appendix B and SAI's in Appendix C.

Objective 5 states:

'To ensure that new developments are supported by essential infrastructure, services and facilities through collaborative working with partners and stakeholders.'

Objective 6 states:

'To improve connectivity between housing, employment, services and recreation areas by a range in transport choices; support the development of an efficient strategic and local highway network, safe walking and cycling routes and public transport services.'

7.2 PMI21 & SAI3/3 - Percentage of new dwellings approved within 1km of key services

7.2.1 Key services include; General Practitioner (GP), primary school, secondary school, existing employment areas (EP2) and town, district, local and neighbourhood centres (EP4).

7.2.2 67% of new dwellings approved are within 1km of a GP.

7.2.3 99% of new dwellings approved are within 1km of a primary school.

7.2.4 8% of new dwellings approved are within 1km of a secondary school.

7.2.5 89% of new dwellings approved are within 1km of an existing employment area (EP2).

7.2.6 73% of new dwellings approved are within 1km of town, district, local and neighbourhood centre (EP4)³.

7.3 PMI22 - Number, type and amount of financial contributions through CIL and/or S106 towards health care

7.3.1 The Community Infrastructure Levy (CIL) is a charge that local authorities have the power to levy on most types of development to fund infrastructure required to support new growth such as transport, education, health and open space facilities. CIL

³ This data includes Catterall as a local centre as it has been developed during the plan period.

chargers are based on the size and types of development proposed and are calculated as a charge per square metre.

7.3.2 Wyre council does not at present have an adopted CIL Charging Schedule. Therefore, there are currently no financial contributions through CIL within Wyre.

7.3.3 As part of the consideration of a planning application, section 106 of the Town and Country Planning Act 1990 enables local authorities to negotiate with developers certain works, restrictions, or contributions towards a range of infrastructure and services, such as community facilities, public open space, transport improvements and/or affordable housing.

7.3.4 There were six financial contributions during the period 1 April 2022 to 31 March 2023. This totalled approximately £128,549.00 through S106 towards health care.

7.4 PMI23 - Number, type and amount of financial contributions through CIL and/or S106 towards other infrastructure

7.4.1 The Community Infrastructure Levy (CIL) is a new charge that local authorities have the power to levy on most types of development to fund infrastructure required to support new growth such as transport, education, health and open space facilities. CIL chargers are based on the size and types of development proposed and are calculated as a charge per square metre.

7.4.2 Wyre council does not at present have an adopted CIL Charging Schedule. Therefore, there are currently no financial contributions through CIL within Wyre.

7.4.3 As part of the consideration of a planning application, section 106 of the Town and Country Planning Act 1990 enables local authorities to negotiate with developers certain works, restrictions, or contributions towards a range of infrastructure and services, such as community facilities, public open space, transport improvements and/or affordable housing.

7.4.4 There were no financial contributions proposed during the period 1 April 2022 to 31 March 2023 for other infrastructure.

7.5 PMI24 - Number of community facilities, by type and settlement

7.5.1 This indicator will be introduced during the plan period as and when data becomes available.

7.6 PMI25 & SAI3/5 - Length of total and new dedicated pedestrian and cycle routes

7.6.1 There are a total of 77,215 meters of dedicated cycle routes within the borough. This includes 30,346m off road and 46,869m on road. In the previous monitoring period, 28,411m of new routes were proposed. There are currently no proposed new routes. No figures are available for dedicated pedestrian routes.

7.6.2 These routes (and wider Lancashire routes) can be seen at Lancashire County Council's dedicated cycling webpage - <https://www.lancashire.gov.uk/leisure-and-culture/cycling/cycle-routes/>

7.6.3 Fylde Coast Local Cycling and Walking Infrastructure Plan (LCWIP) is currently being prepared. Its primary objective is to increase the number of people walking and cycling on the Fylde Coast, particularly for short utilitarian journeys. This includes identifying a long-term plan to enhance active travel and identify key cycling and walking corridors for future active travel investment.

7.7 PMI26 - Number of developments receiving planning permission with agreed travel plan

7.7.1 There were 2 developments receiving planning permission with an agreed travel plan.

7.8 PMI27 - Number, type and amount of financial contributions through CIL and/or S106 towards highways

7.8.1 The Community Infrastructure Levy (CIL) is a new charge that local authorities have the power to levy on most types of development to fund infrastructure required to support new growth such as transport, education, health and open space facilities. CIL chargers are based on the size and types of development proposed and are calculated as a charge per square metre.

7.8.2 Wyre council does not at present have an adopted CIL Charging Schedule. Therefore, there are currently no financial contributions through CIL within Wyre.

7.8.3 As part of the consideration of a planning application, section 106 of the Town and Country Planning Act 1990 enables local authorities to negotiate with developers certain works, restrictions, or contributions towards a range of infrastructure and services, such as community facilities, public open space, transport improvements and/or affordable housing

7.8.4 There were four financial contributions proposed during the period 1 April 2022 to 31 March 2023. This totalled approximately £972,000.00 through S106 towards highways.

7.9 PMI28 & SAI5/2 - Percentage and number of new dwellings built within 1km of a bus stop

7.9.1 During the monitoring period, 99% of new dwellings built were within 1km of a bus stop.

7.10 Indicator Analysis

7.10.1 Table 7.1 illustrates how local policies perform against indicators, where possible, comparing data from the previous year and where targets have been set out by the council.

Table 7.1: Infrastructure Provision (Objective 5 and 6) Indicator Performance Analysis

Policies	Indicator	Description	Comparator / Target	2021/22 Output	2022/23 Output	Performance
SP2 SP7 SP8 SP17 CDMP3 CDMP6 EP11	PMI 21 SAI 3/3	Percentage of new dwellings approved within 1km of key services	Monitor take up	GP = 52% Primary school = 73% Secondary school = 28% Existing employment area = 57% Town, district, local and neighbourhood centre = 63%	GP = 67% Primary school = 99% Secondary school = 8% Existing employment area = 89% Town, district, local and neighbourhood centre = 73%	N/A
	PMI 22	Number, type and amount of financial contributions through CIL and/or S106 towards health care	Monitor contributions	£320,331.00	£128,549.00	N/A
	PMI 23	Number, type and amount of financial contributions through CIL and/or S106 towards other infrastructure	Monitor contributions	£1,046,782.26	£0.00	N/A
	PMI 24	Number of community facilities, by type and settlement a) completed annually b) with extant planning permission c) loss to alternative uses	Monitor change	Data not available	Data not available	N/A
	PMI 25 SAI 3/5	Length of total and new dedicated pedestrian and cycle routes	Increase	Total =77,215m Off-road = 30,346m	Total =77,215m Off-road = 30,346m	Amber

Policies	Indicator	Description	Comparator / Target	2021/22 Output	2022/23 Output	Performance
				On-road =46,869m Proposed =28,411 m	On-road =46,869m Proposed = 0	
	PMI 26	Number of developments receiving planning permission with agreed travel plan	No target	1	2	N/A
	PMI 27	Number, type and amount of financial contributions through CIL and/or S106 towards highways	Monitor contributions	£1,090,837.36	£972,000.00	N/A
	PMI 28 SAI 5/2	Percentage and number of new dwellings built within 1km of a bus stop	Monitor take up	100%	99%	Amber

7.11 Policy Conclusions

7.11.1 It can be established that new developments are supported by essential infrastructure. 99% of new dwellings built were within 1km of bus stops. It is also positive that 99% and 89% of new dwellings approved are within 1km of a primary school and existing employment areas, respectively.

7.11.2 There have been significant financial contributions towards health care and highways. These monies must be invested into community facilities that will benefit the residents and future generations. This in turn will then be reflected in health improvements and accessibility to things such as open green spaces.

7.11.3 It is paramount that these figures continue to rise to ensure connectivity between housing and employment is improved. It is also particularly important in ensuring residents have sustainable transport methods available to them. Should financial contributions continue to come forward, it is also equally important that these are invested to create new opportunities.

7.11.4 It is evident that the policies are working in respect of ensuring new development are being supported by new infrastructure, services and facilities.

8 Natural Environment and Heritage Assets (Objective 7)

8.1 Introduction

This chapter provides an accurate indication that objective 7 of the Local Plan is being implemented correctly and successfully and monitors the performance of policies SP1, SP2, SP5, SP7, CDMP4 and CDMP5. These are monitored using the following Performance Monitoring Indicators (PMI); PMI29, PMI30, PMI31, PMI32, PMI33, PMI34 and PMI35. Sustainability Appraisal Indicators (SAI) are also used where appropriate. The Local Plan policies can be viewed in Appendix A, PMI's can be viewed in Appendix B and SAI's in Appendix C.

Objective 7 states:

'To protect and enhance Wyre's natural and heritage assets and amenity creating a high quality built and natural environment including through high quality design that respects, and where appropriate, improves the character of the locality and surrounding landscape.'

8.2 PMI29 & SAI8/1 - Number and change in areas of biodiversity, geological and landscape importance

8.2.1 Areas of Outstanding Natural Beauty (AONBs) are valuable landscapes, and it is in the interest of the nation to protect and safeguard them. The Countryside and Rights of way Act 2000 legislates for AONBs, ensuring their protection. Wyre contains approximately 5,078 hectares of the Forest of Bowland AONB.

8.2.2 Wyre remains to have approximately 6,297 hectares of land designated as a Site of Special Scientific Interest (SSSI). This is distributed amongst five SSSI sites, which are wholly or partially within Wyre.

8.2.3 Special Areas of Conservation (SACs) are strictly protected sites designated under the EC Habitats Directive. Wyre remains to have approximately 4,058 hectares of SACs which covers Morecambe Bay.

8.2.4 Special Protection Areas (SPAs) are strictly protected sites classified in accordance with Article 4 of the EC Birds Directive. Wyre has approximately 6,229 hectares of SPAs which also covers Morecambe Bay, Duddon Estuary and Bowland Fells.

8.2.5 There are three Local Geodiversity Sites (LGSs) wholly or partially in Wyre. Two of these are rivers or river sections (Barnacre Brook and Knott End/Preesall drumlins), whilst the third is a railway cutting (Wild Goose Wood).

8.2.6 There are 69 BHSs under active management, either wholly or partially within Wyre, covering 3,308ha. These sites are currently under review by Lancashire County Council.

8.3 PMI30 - Amount of new development within areas of biodiversity, geological and landscape importance

8.3.1 There have been 14 new developments proposed in the AONB.

8.3.2 There has been no new development in a SSSI.

8.3.3 There has been no new development in a SAC.

8.3.4 There has been no new development in a SPA.

8.3.5 There has been no new development in a LGS.

8.3.6 There have been 2 new developments proposed and 1 completion in a BHS.

8.4 PMI31 & SAI8/2 - Condition of SSSIs

8.4.1 Natural England assesses SSSI's to measure the quality of their habitats and species and to assess if the appropriate management is being carried out. If an SSSI is found to be in a favourable or recovering condition, it means that its habitats and species are being conserved by appropriate management. If an SSSI is found to be in an unfavourable condition, this means there is a current lack of appropriate management, or that there are damaging impacts (which may be out of the control of the owner) which need to be addressed. The Department of Environment, Food and Rural Affairs (DEFRA) has a target to get 95% of SSSIs into a favourable or recovering position.

8.4.2 Wyre estuary and Lune estuary SSSI have been assessed as being 100% in favourable condition. 100% of Rough Hey Wood SSSI, 84% of Winmarleigh Moss SSSI and 79% of Bowland Fells SSSI is deemed unfavourable but recovering. 15% of Bowland Fells SSSI is assessed as being in an unfavourable declining condition. 16% of Winmarleigh Moss SSSI is deemed unfavourable with no change. However, it must be taken into account that both Bowland Fells and Winmarleigh Moss cross into neighbouring authorities.

8.4.3 SSSIs as a whole across Wyre (Including the sites that cross boundaries) have declined to 93.3% and therefore does not currently meet the required 95% target set out by DEFRA. This marks a decrease of 0.5% from the previous monitoring period. Sites wholly within Wyre have declined to 94.8%.

8.5 PMI32 & SAI8/3 - Number of Biological Heritage Sites (BHS) under active management

8.5.1 In Lancashire there are at present over 1,200 Biological Heritage Sites (BHSs) covering 34,294ha. BHSs contain valuable habitats such as woodland, species-rich grassland, swamp and salt marsh. There are also 'artificial' habitats including, railway embankments and the length of the Lancaster canal which runs through Wyre.

8.5.2 There are 69 BHSs under active management, either wholly or partially within Wyre, covering 3,308ha. These sites are currently under review.

8.6 PMI33 - Loss of the best and most versatile agricultural land

8.6.1 Agricultural land is classified into five grades. Grade one is best quality and grade five is poorest quality. Table 8.1 shows the varying land classifications across Wyre and shows non-agricultural and urban classifications.

8.6.2 There has been no change from the previous monitoring year.

Table 8.1: Agricultural land classification in Wyre, 2020-2022

Agricultural Land Classification (ALC)	2021-2022 Area (Ha)	2022-2023 Area (Ha)
Grade 1	0	0
Grade 2	8,367	8,367
Grade 3	12,089	12,089
Grade 4	2,532	2,532
Grade 5	2,963	2,963
Non Agricultural	60	60
Urban	2,291	2,291

8.7 PMI34 & SAI10/1 - Gain/Loss/Number of heritage assets

8.7.1 In Wyre there are seven conservation areas; Calder Vale, Churchtown, Dolphinholme, Fleetwood, Garstang, Poulton-le-Fylde and Scorton. Conservation areas recognise a broader character than individual listed buildings, as all features within a conservation area are part of its character.

8.7.2 There are eight scheduled monuments in Wyre – three near Bleasdale within the Forest of Bowland AONB, one in Garstang, one at Barnacre-with-bonds, one in Great Eccleston, one in Claughton, and one on Dolphinholme.

8.7.3 As at 31st March 2023, Historic England identified 307 listings⁴ of listed buildings in Wyre. Of these, two were grade 1, seven were grade 2*, and 298 were grade 2.

8.7.4 There remains two Grade 2 Registered Historic Parks and Gardens in Wyre – The Mount (including the surrounding cobble wall) and the Memorial Park at Fleetwood.

8.7.5 Table 8.2 illustrates the number of heritage assets in sub-categories across Wyre and the change in number from the previous monitoring year.

Table 8.2: Heritage Assets in Wyre, 2020-22

Heritage Assets	2021-22	2022-23	Gain / Loss / No change
Conservation areas	7	7	No Change
Scheduled monuments	8	8	No Change
Listed buildings	307	307	No Change
Parks and gardens	2	2	No Change

⁴ Some listings include more than one listed building, i.e. a terraced street with individual listed buildings is included as one listing.

8.8 PMI35 & SAI10/2 – Number of scheduled monuments and listed buildings considered to be at risk

8.8.1 Wyre has one scheduled monument and two grade 2 listed buildings that are considered to be at risk by English Heritage⁵.

8.8.2 Church of St Luke, Church Lane, Winmarleigh is a grade 2 listed building that is considered to be at risk due to damage to the extensive internal stencil decoration that has been caused by water ingress. There are also significant settlement cracks to the north east corner of the chancel and the chapel and organ chamber are beneath pitched roofs with the adjacent valley gutters being complex. The condition is rated as poor and remains as a priority C case - slow decay, no solution agreed.

8.8.3 Sacred Heart Catholic Church, Heys Street, Thornton Cleveleys is also a grade 2 listed building which is considered to be at risk due to suspected inclusion of now corroding iron locating dowels within the base of tracery mullions that is causing widespread failure. The condition is rated as poor and remains as a priority A case - immediate risk of further deterioration or loss of fabric, no solution agreed.

8.8.4 Bleasdale Circle enclosed Bronze Age urnfield, Bleasdale is a scheduled monument that is deemed to be at risk. The condition is generally unsatisfactory with major localised problems, with the vulnerability due to scrub/tree growth. The monument is declining.

8.9 SAI8/4 – Areas of Ancient woodland

8.9.1 Ancient Woodlands are areas which have had woodland cover and have been relatively undisturbed by human activity over hundreds of years. They have evolved into complex communities of trees, plants, fungi, microorganisms and insects. It is essential to protect and enhance these areas of biodiversity as these areas cover just 2% of the UK.

8.9.2 There are 20 ancient woodlands wholly or partially in Wyre.

8.10 Indicator Analysis

8.10.1 Table 8.3 illustrates local plan policies perform against indicators, where possible, comparing data from the previous year and where targets have been set out by the council.

⁵ English Heritage Risk Register lists those sites most at risk of being lost through neglect, decay or inappropriate development.

Table 8.3: Natural Environment and Heritage Assets (Objective 7) Indicator Performance Analysis

Policies	Indicator	Description	Comparator / Target	2021/22 Output	2022/23 Output	Performance
SP1 SP2 SP5 SP7 CDMP4 CDMP5	PMI 29 SAI 8/1	Number and change in areas of biodiversity, geological and landscape importance	No loss (ha)	AONB = 5,078ha SSSI = 6,297ha SAC = 4,058ha SPA = 6,228ha LGS = N/A BHS = 3,308ha	AONB = 5,078ha SSSI = 6,297ha SAC = 4,058ha SPA = 6,229ha LGS = N/A BHS = 3,308ha	Green
	PMI 30	Amount of new development within areas of biodiversity, geological and landscape importance a) completed annually b) with extant planning permission	No development unless justified	a) 2 b) 16	a) 1 b) 16	Green
	PMI 31 SAI 8/2	Condition of SSSIs	95% of SSSIs in favourable or recovering condition	93.8%	93.3%	Red
	PMI 32 SAI 8/3	Number of Biological Heritage Sites (BHS) under active management	Monitor over plan period	69	69	N/A
	PMI 33	Loss of the best and most versatile agricultural land	Monitor Loss	Grade 2 = 8,367ha Grade 3 = 12,089ha	Grade 2 = 8,367ha Grade 3 = 12,089ha	Green

Policies	Indicator	Description	Comparator / Target	2021/22 Output	2022/23 Output	Performance
				Grade 4 = 2,532ha Grade 5 = 2,963 NA = 60 Urban = 2,291	Grade 4 = 2,532ha Grade 5 = 2,963 NA = 60 Urban = 2,291	
	PMI 34 SAI 10/1	Gain/Loss/Number of heritage assets a) conservation areas b) scheduled monuments c) listed buildings d) parks and gardens	Monitor Change	a)7 b)8 c)307 d)2	a)7 b)8 c)307 d)2	N/A
	PMI 35 SAI 10/2	Number of scheduled monuments and listed buildings considered to be at risk	No increase	3	3	Green
	SAI 8/4	Areas of Ancient woodland	No loss	20	20	Green

8.11 Policy Conclusions

8.11.1 As is evident from the natural environment and heritage assets chapter, through the implementation of indicators, the policies (SP and CDMP) are overall performing successfully and meeting the objectives set out.

8.11.2 There has been no losses to areas of biodiversity, geological and landscape importance. The condition of the SSSIs remains healthy, although does not score green due to not meeting national requirements.

8.11.3 Wyre also remains to have just 3 scheduled monuments and listed buildings considered to be at risk. This highlights further that policies are ensuring the protection and enhancement of Wyre's natural and heritage assets.

9 Spatial Development (Objective 8)

9.1 Introduction

This chapter provides an accurate indication that objective 8 of the Local Plan is being implemented correctly and successfully and monitors the performance of policies SP1, SP2, SP3, SP4, HP4, HP5, HP6, HP7 and EP8. These are monitored using the following Performance Monitoring Indicators (PMI); PMI36 and PMI37. Sustainability Appraisal Indicators (SAI) are also used where appropriate. The Local Plan policies can be viewed in Appendix A, PMI's can be viewed in Appendix B and SAI's in Appendix C.

Objective 8 states:

“To protect the separate identity of individual settlements.”

9.2 PMI36 – Number of new developments (by type) in the Green Belt

9.2.1 There has been no new completions in the Green Belt.

9.2.2 In the monitoring year, there have been 6 planning permissions granted in the green belt. This equates to 1.3% of all planning applications granted in the monitoring year.

9.2.3 Of the granted permissions, 4 were for residential purposes and 2 were for 'other' purposes.

9.3 PMI37 - Number of new developments (by type) in the Countryside

9.3.1 There have been 82 completions in the Countryside. This equates to 11.1% of all completions in the monitoring year. 25 of these completions form part of a care home facility (see planning application 20/01263/LCC for more details).

9.3.2 In the monitoring year, there were 119 developments granted planning permission in the countryside. This equates to 25% of all planning applications granted in the monitoring year.

9.3.3 Of the granted permissions, 58.8% were for residential purposes, 10.1% leisure, 4.2% employment and 26.9% fall into the 'other' category.

9.4 Indicator Analysis

9.4.1 Table 9.1 illustrates local plan policies perform against indicators, where possible, comparing data from the previous year and where targets have been set out by the council.

Table 9.1: Spatial Development (Objective 8) Indicator Performance Analysis

Policies	Indicator	Description	Comparator / Target	2021/22 Output	2022/23 Output	Performance
SP1 SP2 SP3 SP4	PMI 36	Number of new developments (by type) in the Green Belt a) completed annually b) with extant planning permission	No development unless justified	a) 0 b) 9	a) 0 b) 6	Amber
HP4 HP5 HP6 HP7 EP8	PMI 37	Number of new developments (by type) in the Countryside a) completed annually b) with extant planning permission	No development unless justified	a) 54 b) 147	a) 82 b) 119	Amber

9.5 Policy Conclusions

9.5.1 There have been 0 new completions in the green belt. This is extremely important as the green belt is used to prevent merging of neighbouring settlements and to protect the special character of a settlement.

9.5.2 There has been considerable development in countryside areas (examples include householder applications, agricultural applications, and private equestrian development). The open and rural character of the countryside is intrinsic to the identity of and 'sense of place' in Wyre. Policies could be misinterpreted as not being effective as the data relates to all types of development and not specifically new dwellings.

10 Green Infrastructure and Health (Objective 9)

10.1 Introduction

This chapter provides an accurate indication that objective 9 of the Local Plan is being implemented correctly and successfully and monitors the performance of policies SP1, SP2, SP7, SP8, CDMP3, CDMP4, CDMP6 and HP9. These are monitored using the following Performance Monitoring Indicators (PMI); PMI 38, PMI39, PMI40, PMI41, PMI42, PMI43 and PMI44. Sustainability Appraisal Indicators (SAI) are also used where appropriate. The Local Plan policies can be viewed in Appendix A, PMI's can be viewed in Appendix B and SAI's in Appendix C.

Objective 9 states:

'To achieve a healthy environment with accessible high quality green infrastructure with opportunities for active recreation that contributes to the improvement in the general health and well-being of the population and promotes healthy lifestyle choices.'

10.2 PMI38 & SAI5/3- Length of total and new dedicated public rights of way (PROW)

10.2.1 As of 31 March 2022, Wyre had approximately 1,119 PROWs in total. This figure includes bridleways, footpaths, byways open to all traffic, and public path order applications. The total number of PROWs in Wyre equates to a total combined length of over 422.54Km's.

10.2.2 This includes 37.17km's of footpaths and 26.53km's of bridleways. There is currently a total of 4.48km of public path order applications. The data is a snapshot taken from dynamic data and so is under constant review by Lancashire County Council and is subject to change as part of a continuous review programme.

10.3 PMI39 & SAI9/2 - Number of total and new green flag status parks

10.3.1 Green flags are awarded by The Green Flag Reward® scheme to well managed parks and green spaces that have attained the benchmark standard for the management of recreational outdoor spaces across the United Kingdom.

10.3.2 Wyre has a total of five parks that have been recognised as meeting this requirement. These are Poulton's Vicarage Park, Hawthorne Park and Wyre Estuary Country Park (Stanah Picnic Site) in Thornton, Memorial Park and The Mount in Fleetwood

10.4 PMI40 and SAI9/1 – Amount of Green Infrastructure lost to development (ha)

10.4.1 There has a total of 0.06ha of green infrastructure lost due to development in 2022-23.

10.5 PMI41 - Amount of new green infrastructure (including public open space) provided through new development

10.5.1 Green infrastructure (GI) should be provided on site. Where appropriate, the Council will accept a financial contribution towards improving the quality and accessibility of nearby existing green infrastructure in lieu of on-site provision.

10.5.2 Policy HP9 required 6.15ha of Green Infrastructure to be provided across 6 sites. 4.76ha of Green Infrastructure has been proposed and subsequently approved (including public open space). These figures include applications which were allowed on appeal in the monitoring period 2022-23.

10.5.3 In the monitoring year, there have been proposed financial contributions of £187,001.48 towards green infrastructure from permitted applications. The planning application 21/00341/FULMAJ, which was allowed on appeal in the 2022-23 monitoring year, also has a green infrastructure contribution of £90,000.00. Therefore, a total of £277,001.48 has been proposed towards green infrastructure.

10.6 PMI42 & SAI3/4 - Number of open space sites above 80% quality score

10.6.1 The Wyre Open Space Audit and Needs Assessment Evidence Base is an important part of the evidence base for the Wyre Green Infrastructure Strategy. It was first produced in 2007, updated in 2010 and again in 2013 as part of the Wyre Green Infrastructure Strategy. It is recommended that the evidence base is updated every three to five years. At the time of writing, the GI evidence base is being updated with a new Green Infrastructure Audit, Green Infrastructure Strategy and Playing Pitch and Outdoor Strategy in progress. Once the evidence is available, it will be made available on the Council’s website.

10.7 PMI43 & SAI3/2 - Number of wards with LSOAs in the bottom 10% most deprived for health deprivation

10.7.1 From 2019 data, there were a total number of seven (7) wards with LSOAs in the bottom 10% most deprived for health deprivation. Wards included: Rossall, Warren, Pharos, Mount, Park, Jubilee and Bourne.

10.8 PMI44 - Number of Health Impact Assessments (HIA)

10.8.1 There have been zero Health Impact Assessments.

10.9 Life Expectancy

10.9.1 At the age of 65, Wyre has some of the longest life expectancy averages in Lancashire for both men and women. Table 10.1 illustrates life expectancy averages at 65 years old for males and females against regional and national averages.

TABLE 10.1 LIFE EXPECTANCY AT 65 YEARS, REGIONALLY AND NATIONALLY, 2015 – 2020 (PHE)

	Wyre		Lancashire		North West		England	
	Male	Female	Male	Female	Male	Female	Male	Female
2015-2017	83.6	85.9	83.4	85.6	83.0	85.2	83.8	86.1
2016-2018	83.5	86.0	83.4	85.6	83.2	85.3	83.9	86.2
2017-2019	83.4	86.3	83.4	85.6	83.3	85.5	84	86.3
2018-2020	83.1	86.0	83.1	85.4	82.9	85.2	83.7	86.1

10.9.2 There are slight differences in life expectancy across the borough and these generally correlate with areas of high deprivation. The life expectancy of both males

and females in Wyre has decreased by 0.3. Wyre has a higher life expectancy in females compared with Lancashire and the North West.

10.9.3 The 2021 census identified that 10.1% of the population in Wyre have their day-to-day activities limited 'a lot' by some form of long-term physical or mental health condition or illness. This was the highest in the Lancashire and is higher than regional and national figures, as shown in table 10.2.

TABLE 10.2: LIMITING LONG-TERM ILLNESS, REGIONALLY AND NATIONALLY, 2011 AND 2021 CENSUS

	Wyre (%)	Lancashire (%)	North West (%)	England and Wales (%)
2011	11.7	9.8	10.3	8.5
2021	10.1	8.5	8.9	7.5

10.9.4 The percentage of people in Wyre with a long-term illness has declined by 1.6% between 2011 to 2021. The figure has also declined regionally and nationally.

10.9.5 There was a change to the terminology in the 2021 Census. Census 2021 asked residents to report if they had a long-term physical or mental health condition or illness, whilst Census 2011 asked residents whether they had a long-term health problem or disability.

10.10 SAI3/1 - Percentage of resident population who consider themselves to be in good health

10.10.1 The 2021 census identified that 44.3% of people in Wyre rated their health as 'very good' which is lower than regional and national figures, as shown in table 10.3. However, this is higher than the percentage in the 2011 Census (43.2%). At the other end of the scale, 6.9% of people reported their health as 'bad' or 'very bad', compared to 7.2% in 2011.

10.10.2 77.6% of residents in Wyre consider themselves to be in at least good health.

10.10.3 Census 2021 was conducted during the Covid-19 pandemic. This may have influenced how people perceived and rated their health, and therefore may have affected how people chose to respond.

TABLE 10.3: SELF-REPORTED HEALTH, REGIONALLY AND NATIONALLY, 2021 CENSUS

	Very good (%)	Good (%)	Fair (%)	Bad (%)	Very bad (%)
Wyre	44.3	33.3	15.5	5.3	1.6
Lancashire	47.1	33.5	13.7	4.5	1.3
North West	47.7	32.7	13.4	4.8	1.4
England and Wales	48.4	33.6	12.7	4.0	1.2

10.11 Indicator Analysis

10.11.1 Table 10.4 illustrates how local plan policies perform against indicators, where possible, comparing data from the previous year and where targets have been set out by the council.

Table 10.4: Green Infrastructure and Health (Objective 9) Indicator Performance Analysis

Policies	Indicator	Description	Comparator / Target	2021/22 Output	2022/23 Output	Performance
SP1 SP2 SP7 SP8	PMI 38 SAI 5/3	Length of total and new dedicated public rights of way (PROW)	Increase	Approx. 1,215 Over 436km's	Approx. 1,119 Over 422km's	Red
CDMP3	PMI 39 SAI 9/2	Number of total and new green flag status parks	Increase	6	5	Red
CDMP4 CDMP6	PMI 40 SAI 9/1	Amount of Green Infrastructure lost to development (ha)	No loss (ha)	0.24ha	0.06ha	Green
HP9	PMI 41	Amount of new green infrastructure (including public open space) provided through new development a)on site b)off-site contributions through CIL and/or S106 agreements	Monitor provision/contributions	a) 12.49ha b) £181,276.26	a) 4.76 ha b) £277,001.48	N/A
	PMI 42 SAI 3/4	Number of open space sites above 80% quality score	Increase	Data not available	Data not available	N/A
	PMI 43 SAI 3/2	Number of wards with LSOAs in the bottom 10% most deprived for health deprivation	Decrease	7	7	Green
	PMI 44	Number of Health Impact Assessments (HIA)	Monitor take up	None (0)	None (0)	N/A
	SAI 3/1	Percentage of resident population who consider themselves to be in good health	Increase	76.8%	77.6%	Green

10.12 Policy Conclusions

10.12.1 The number of green flag awards and the length of PROWs has decreased.

10.12.2 There has been minimal green infrastructure lost to new development, 4.76ha proposed to come forward and over £277,000 in off-site contributions. This is a positive outcome as it is providing much needed green space, which can help to improve overall health. Although on-site provision is preferred, the financial contributions are vitally important in ensuring high quality green infrastructure is still accessible to those in existing residential areas by using said monies to update/replace and improve the necessary green infrastructure.

10.12.3 Due to the increase in green infrastructure that has been provided, it is evident that policies are being implemented correctly and are performing sufficiently. It is essential that this is continued to ensure healthy lifestyles can be maintained and promoted.

11 Climate Change (Objective 10)

11.1 Introduction

This chapter provides an accurate indication that objective 10 of the Local Plan is being implemented correctly and successfully monitors the performance of policies SP2, CDMP1, CDMP6 and EP12. These are monitored using the following Performance Monitoring Indicators (PMI); PMI45, PMI46 and PMI47. Sustainability Appraisal Indicators (SAI) are also used where appropriate. The Local Plan policies can be viewed in Appendix A, PMI's can be viewed in Appendix B and SAI's in Appendix C.

Objective 10 states:

'To respond to the challenge of climate change encouraging best use of resources and assets minimising wastage and ensuring the Borough adapts to climate change.'

11.2 PMI45 - Per capita amount of CO₂ emissions in the LA area

11.2.1 In responding to climate change, there is a need to understand and adapt to the impacts this is likely to have on the environment and to seek ways in which carbon emissions can be reduced. Ensuring that adaptation and mitigation measures do not adversely affect natural beauty and maximising opportunities to improve environmental resilience, such as improving habitat condition and enhancing connectivity, are a priority.

11.2.2 Table 11.1 illustrates that the largest estimated source of carbon emissions in Wyre in 2020 and 2021 was the transport sector. Per capita carbon emissions are higher than the regional and national figures and have increased on the previous year.

Table 11.1: Carbon Emissions Estimates at Local, Regional and National Level, 2020-2021 (DESNZ)*

	Year	Industry Total (kt)	Commercial Total (t)	Domestic Total (kt)	Public Sector Total (kt)	Transport Total (kt)	Land Use Change and Forestry Net Emissions (kt)	Agriculture total (kt)	Waste management Total (kt)	Total (kt)	Per Capita (t)
Wyre	2020	119	28	172	11	187	73	16	0.1	606	5.4
	2021	128	37	178	16	204	72	19	0.1	653	5.8
	Change (%)	7	33	3	39	9	-1	15	0	8	7
Lancashire	2020	1738	198	1783	213	2120	272	169	1.4	6493	5.3
	2021	1895	254	1854	244	2282	269	187	1.4	6985	5.7
	Change (%)	9	28	4	15	8	-1	11	0	8	8
North West	2020	9137	1560	10091	1532	11367	-50	599	92	34327	4.6
	2021	9759	1834	10531	1749	11907	-89	675	106	36471	4.9
	Change (%)	7	18	4	14	5	77	13	15	6	6
England	2020	55386	12400	74268	11747	85891	-2392	5357	287	242943	4.3
	2021	58597	14654	76940	13226	93134	-2412	5972	316	260428	4.6
	Change (%)	6	18	4	13	8	1	11	10	7	7

*If a larger version of this table is required, please contact the Planning Policy team.

11.3 PMI46 – New renewable energy installations, by type (Feed in tariff in Mega Watts)

11.3.1 The Department for Business, Energy and Industrial Strategy (BEIS) previously confirmed that following the closure of the Feed-in-Tariff scheme in March 2019, the data released in January 2020 would be the final release and data discontinued.

11.3.2 There have not been any additional commercial, industrial or community renewable energy installations.

11.3.3 Table 11.2 below, indicates the most recently available data in Wyre. This data relates to the monitoring period 1st April 2018 to 31st March 2019.

Table 11.2: Feed in Tariff Installations in Wyre, 2018-2019 (OFGEM)

Technology	Photovoltaic		Wind		Total Installations	Total Capacity (MW)
	Installations	Capacity (MW)	Installations	Capacity (MW)		
Domestic	19	0.139	0	0	19	0.139
Commercial	0	0	0	0	0	0
Industrial	0	0	0	0	0	0
Community	0	0	0	0	0	0
Total	19	0.139	0	0	19	0.139

11.4 PMI47 & SAI12/3 – Number of Electric Vehicle Charging Points (EVCP)

11.4.1 At the time of writing, Wyre had 113 charge points available. This is an increase of 86 from the previous year. Table 11.3 illustrates the location of these EVCP's.

Table 11.3 - Location of EVCP's in Wyre

Location	No. Chargers Available
Fleetwood	25
Thornton	9
Cleveleys	30
Poulton-le-Fylde	16
Garstang	14
Great Eccleston	4
Hambleton	2
Knott End	2
Moto Lancaster M6 Services (Northbound and Southbound)	11

11.5 SAI12/1 – Local rail patronage

11.5.1 Wyre remains to have one operating train station – Poulton-le-Fylde. The train station is an integral part of the community which acts as a direct link between the West Coast Mainline at Preston, through to Blackpool. In the period 2021-2022, Poulton-le-Fylde station saw a total of 425,336 passengers. This is a significant

increase from the previous year (2020-21) where there was a total of 105,762 passengers.

11.5.2 Work to electrify more rail routes in the Northwest is now complete. The 17 mile route between Blackpool North and Preston was completed early in 2018. The developments allow a number of local services that pass through Lancashire to be operated by quicker and more reliable electric trains. Services from Liverpool to Blackpool now run direct with electric power. Changes in services/timetables could be a reason for the increase.

11.6 SAI12/2 – Indicators used to monitor the implementation of the Local Transport Plan

11.6.1 Indicators currently being used to monitor the implementation of the local transport plan that relate to climate change are not applicable. New monitoring indicators may be introduced with the review of the Local transport plan, and so if then applicable, these indicators may be introduced.

11.7 Indicator Analysis

11.7.1 Table 11.3 illustrates how local plan policies perform against indicators, where possible, comparing data from the previous year and where targets have been set out by the council.

Table 11.3: Climate Change (Objective 10) Indicator Performance Analysis

Policies	Indicator	Description	Comparator / Target	2021/22 Output	2022/23 Output	Performance
SP2	PMI 45	Per capita amount of CO ₂ emissions in the LA area	<6.1(t)	2019 = 6.1 (t) 2020 = 5.4 (t)	2021 = 5.8 (t)	Green
CDMP1 CDMP6	PMI 46	New renewable energy installations, by type (Feed in tariff in Mega Watts)	Increase	Data Discontinued	Data Discontinued	N/A
EP12	PMI 47 SAI 12/3	Number of Electric Vehicle Charging Points (EVCP)	Increase	27	113	Green
	SAI 12/1	Local rail patronage	Increase	2020/21 = 105,672	2021/22 = 425,336	Green
	SAI 12/2	Indicators used to monitor the implementation of the Local Transport Plan	To be developed	N/A	N/A	N/A

11.8 Policy Conclusions

11.8.1 As is evident from the climate change chapter, through the implementation of indicators, the policies (SP, CDMP and EP) are performing successfully and meeting the objectives set out.

11.8.2 It is evident that Wyre as an authority is progressing in terms of reducing climate change, with a considerable emphasis put upon the introduction of electric vehicle charging points. At the time of writing, there were 113 EVCPs in Wyre.

11.8.3 2020 data on per capita amount of CO₂ emissions in the local authority area, which was not available in the previous year's AMR, has since been released and is reflected in this year's AMR. The data shows that per capita amount of CO₂ emissions in the local authority area has increased from 5.4(t) in 2020 to 5.8(t) in 2021, but remains below 6.1(t).

11.8.4 There has been a significant increase in rail use compared to the previous monitoring year's output, where a series of pandemic lockdowns and governmental measures were implemented that encouraged people to work from home.

11.8.5 More information on how the wider Wyre organisation is tackling climate change can be found here - <https://www.wyre.gov.uk/tacklingclimatechange>

12 Environmental Impact (Objective 11)

12.1 Introduction

This chapter provides an accurate indication that objective 11 of the Local Plan is being implemented correctly and successfully monitors the performance of policies SP1, SP2, SP4, SP7, CDMP1, CDMP2 and CDMP4. These are monitored using the following Performance Monitoring Indicators (PMI); PMI48, PMI49, PMI50, PMI51, PMI52, PMI53, PMI54, PMI55, PMI56 and PMI57. Sustainability Appraisal Indicators (SAI) are also used where appropriate. The Local Plan policies can be viewed in Appendix A, PMI's can be viewed in Appendix B and SAI's in Appendix C.

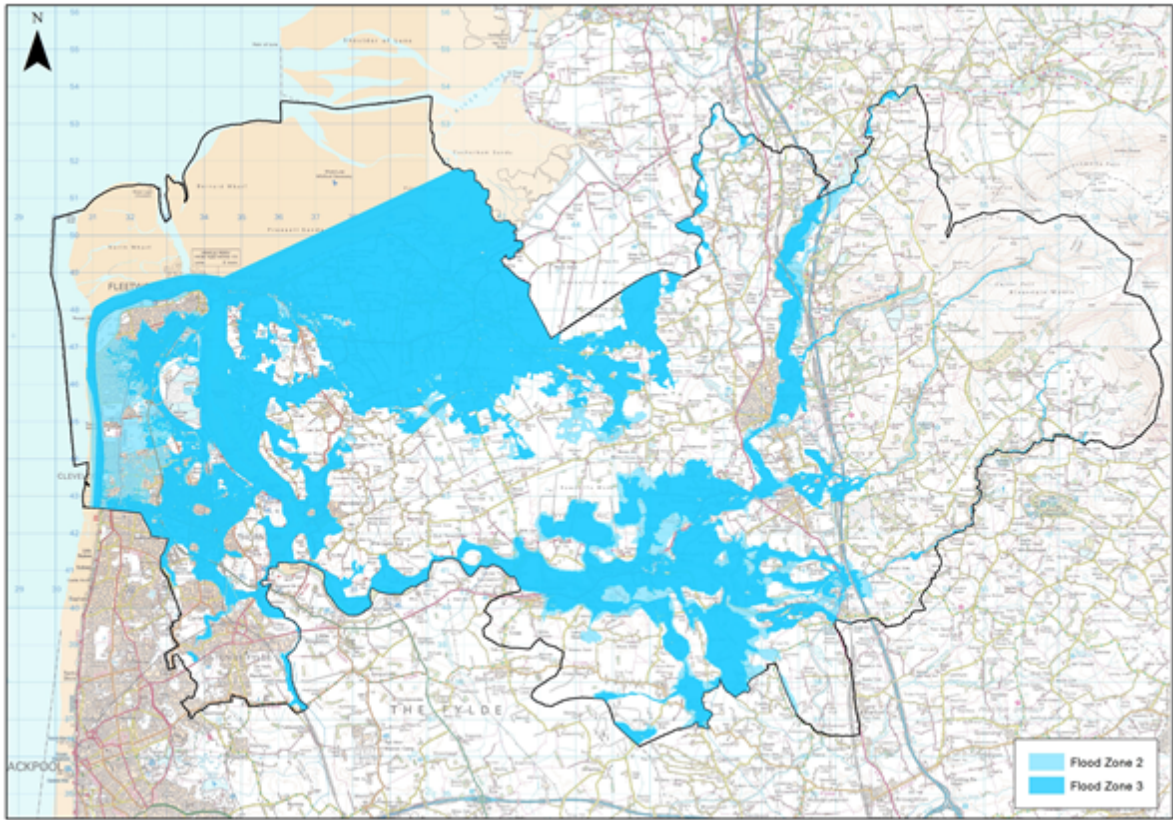
Objective 11 states:

'To minimise environmental impact including flood risk and pollution and where necessary ensure appropriate mitigation, compensation and enhancement measures.'

12.2 PMI48 & SAI11/2 – Number of planning permissions granted contrary to Environment Agency advice in areas at risk from flooding

12.2.1 With much of Wyre relatively low-lying, coastal and riparian land, the risk of coastal and river flooding is considerable, with much of the coastal area to the west and north of the borough and land around the River Wyre classified as Flood Zone 3 by the Environment Agency (EA) as shown in Figure 12.1 below.

Figure 12.1: EA Designated Flood Zone 2 & 3 in Wyre (EA)



12.2.2 In the year 2022 to 2023, there were initially 21 planning applications objected to by the EA, all of which were objected due to the developments being at risk of flooding or would increase the risk of flooding elsewhere.

12.2.3 Of the 21 initially objected, 8 were permitted or approved following the submission of an acceptable Flood Risk Assessment, which resulted in the initial objection being removed. 5 were refused, 2 were withdrawn by the applicant and 4 were pending consideration at the time of writing.

12.2.4 1 planning permission was permitted contrary to Environment Agency advice in areas at risk from flooding. 22/00228/FUL was approved due to the site being located on a significantly elevated position on Wyre Road, which is considered unlikely to flood. There is also no history of flooding to the property or adjacent land.

12.3 PMI49 – Number of planning permissions granted contrary to Environment Agency advice on water quality grounds

12.3.1 In the year 2022 to 2023, there were initially 21 planning applications objected by the EA. None of which were objected on grounds that the development would adversely affect water quality.

12.3.2 Therefore, zero planning permissions were granted contrary to Environment Agency advice on water quality grounds.

12.4 PMI50 – Upgrading of flood defences to 1 in 200 year standard

12.4.1 The upgrading of flood defences located from Rossall Hospital to Fleetwood Golf Course were completed June 2018. The scheme was completed on schedule and below target cost.

12.4.2 The Environment Agency (EA) have completed an Outline Business Case (OBC) for the raising and upgrading of the flood defences located at Fleetwood Docks. This does not extend from the docks to Hillhouse, which is seen as a lower risk. Several sources have been identified to meet the funding gap for the Fleetwood Docks scheme. It still remains an EA priority and work on the Full Business Case has commenced.

12.4.3 Flood defences located from Fleetwood docks to Stannah Embankment are yet to be upgraded. The site is not within the future capital programme and is not seen as an EA priority. However, circumstantial changes could occur and monitoring is being undertaken with any required works undertaken accordingly. This scheme is yet to commence.

12.4.4 Wyre Beach & Dune Management Scheme was approved (February 2020) by the Environment Agency. Due to inflationary increases, the scheme costs have risen to £52 million and funding approval has been granted by the EA. The scheme has been split into two phases. The rock revetment at Rossall beach, part of Phase 1, was completed in June 2023 with the wall due for completion by December 2023. Phase 2 - rock groynes between Cleveleys and the Rossall scheme and rock revetment and groynes from the Rossall scheme to Fleetwood Marine Lakes - commenced on 31 July 2023 and is anticipated to be completed by end of 2026.

12.5 PMI51 – Number of planning permissions incorporating Sustainable Drainage Systems (SuDS)

12.5.1 There have been 30 planning permissions granted which incorporate SuDS. This equates to 4.62% of all planning permissions granted. This data does not include discharge of condition applications.

12.6 PMI52 – Inappropriate development in the Coastal Change Management Area (CCMA)

12.6.1 There have been zero (0) new completions in the CCMA.

12.6.2 In the monitoring year, there was one (1) planning permission granted in the CCMA. 22/00975/FUL is a change of use of existing classroom to form ancillary living accommodation.

12.7 PMI53 – Number, type and amount of financial contributions through CIL and/or S106 towards flood prevention

12.7.1 The Community Infrastructure Levy (CIL) is a new charge that local authorities have the power to levy on most types of development to fund infrastructure required to support new growth such as transport, education, health and open space facilities. CIL chargers are based on the size and types of development proposed and are calculated as a charge per square metre.

12.7.2 Wyre council does not at present have an adopted CIL Charging Schedule. Therefore there are currently no financial contributions through CIL within Wyre.

12.7.3 As part of the consideration of a planning application, section 106 of the Town and Country Planning Act 1990 enables local authorities to negotiate with developers certain works, restrictions, or contributions towards a range of infrastructure and services, such as community facilities, public open space, transport improvements and/or affordable housing

12.7.4 There were no financial contributions proposed during the period 1 April 2022 to 31 March 2023. This totalled £0 through CIL and/or S106 towards flood prevention.

12.8 PMI54, SAI13/1 & SAI13/2 – Measure air pollutants within Air Quality Management Areas (AQMA)

12.8.1 Wyre has one Air Quality Management Area (AQMA), which was introduced in 2009. This is an area encompassing Chapel Street, in Poulton-le-Fylde, along with the junctions with Higher Green/Queens Square, and Breck Road/Vicarage Road/Ball Street.

12.8.2 The pollutant measured within this AQMA is Nitrogen dioxide (NO₂) with an air quality objective of 40µg/m³ (measured as annual mean).

12.8.3 The 2021 data outlined a slight increase with a recorded value of 22µg/m³ compared with the 2020 data where there was a recorded value of 20µg/m³. Although there has been a slight increase, this recording is still lower than the objective. This is an indication that the Air Quality Action Plan 2011 is providing positive impact.

12.8.4 Much of the 2020 reporting year fell within the period of the Covid-19 pandemic which resulted in both national and local lockdowns which significantly reduced the amount of traffic and congestion within the borough, in particular within the vicinity of the AQMA and centre of Poulton-le-Fylde; a town heavily reliant on both the hospitality industry and night time economy, and as such an area heavily impacted by the restrictions introduced to control the pandemic. It is positive that there has only been a slight increase in the value for 2021.

12.8.5 Additional air quality information can be found at: <https://www.wyre.gov.uk/pollution/air-quality>

12.9 PMI55 – Number of total and new AQMAs designated in the Borough

12.9.1 There have been no new AQMAs designated in the borough. Therefore, Wyre remains to have one AQMA designated.

12.9.2 The council does remain cautious in the knowledge that further development in and around Poulton-le-Fylde is proposed, and thereby stands by its intention to defer any decision in relation to revoking the Chapel Street AQMA until the impact of that development on the Chapel Street AQMA can be better determined.

12.10 PMI56 & SAI11/3 – Bathing water quality

12.10.1 The Environment Agency takes up to twenty water samples at each of England's designated bathing waters during the bathing water season between May and September each year. A classification for each bathing water is calculated annually based on samples from the previous four years. These classifications are, from best to worst:

Excellent – the highest cleanest seas

Good – generally good water quality

Sufficient – the water meets minimum standards

Poor – the water has not met the minimum standards. Work is planned to improve bathing waters not yet reaching Sufficient.

12.10.2 In Wyre, there are two designated bathing waters; Cleveleys and Fleetwood. Table 12.1 illustrates the latest bathing water quality compared to the previous year.

12.10.3 Both designated bathing waters have been classified as being good for 2021 and 2022.

Table 12.1: Bathing Water Quality in Wyre, 2021-2022 (EA)

Designated Bathing Water	2021 Classification	2022 Classification
Cleveleys	Good	Good
Fleetwood	Good	Good

12.11 PMI57 – Number of planning permissions granted contrary to HSE advice

12.11.1 There have been zero (0) new planning permissions granted contrary to HSE advice.

12.12 SAI11/1 – Rivers reaching Good Ecological Status (GES)

12.12.1 Since 2009, standards of river water have been measured according to standards set in the Water Framework Directive (WFD). The quality of river water is important for aquatic life. Unlike bathing water quality, which has direct health implications for humans, river water quality is less critical for most residents of Lancashire.

12.12.2 Ecological Status is classified in all Water Bodies, expressed in terms of five classes (high, good, moderate, poor and bad). These classes are established on the basis of specific criteria and boundaries defined against biological, physico-chemical and hydromorphological elements.

12.12.3 Biological assessment – uses numeric measures of communities of plants and animals (for example, fish and rooted plants). Physico-chemical assessment – looks at elements such as temperature and the level of nutrients, which support the biology. Hydromorphological quality looks at water flow, sediment composition and movement, continuity (in rivers) and the structure of physical habitat.

12.12.4 The Environment Agency was aiming to achieve ‘good status’ in at least 60% of waters by 2021 and in as many waters as possible by 2027.

12.12.5 The latest data available shows that in 2019, Wyre had 0% of rivers reach good status. 76% reached moderate status and 24% were classified as being poor/bad overall. 2019 results can be seen in table 12.2. Unfortunately there has not been any further data released.

Table 12.2: Rivers reaching Good Ecological Status in Wyre Operational Catchments, 2016 and 2019 (EA)

Operational Catchment	River/ Watercourse	2016 Overall Status	2019 Ecological Status*	2019 Chemical Status	2019 Overall Status
Brook and Trib	Barton (Westfield) Brook	Poor	Poor	Fail	Poor
	Brock	Good	Moderate	Fail	Moderate
	New Draught Brook	Poor	Poor	Fail	Poor
	Woodplumpton Brook	Poor	Poor	Fail	Poor
Fleetwood Peninsula Trib	Hillylaid Pool - Main Dyke	Moderate	Moderate	Fail	Moderate
	Hillylaid Pool - Tidal Wyre	Moderate	Moderate	Fail	Moderate
	Lords Brook	Poor	Bad	Fail	Bad
	Thistleton Brook	Moderate	Moderate	Fail	Moderate
Wyre and Calder	Calder (Wyre)	Moderate	Moderate	Fail	Moderate
	Marshaw Wyre	Good	Good	Fail	Moderate
	Tarnbrook Wyre	Moderate	Good	Fail	Moderate
	Wyre - conf R Brock to tidal	Moderate	Moderate	Fail	Moderate
	Wyre - Upper	Good	Moderate	Fail	Moderate
	Wyre DS Grizedale Brook confl	Moderate	Moderate	Fail	Moderate

Operational Catchment	River/ Watercourse	2016 Overall Status	2019 Ecological Status*	2019 Chemical Status	2019 Overall Status
Lune	Cocker Lune	Moderate	Moderate	Fail	Moderate
	Pilling Water	Moderate	Moderate	Fail	Moderate
	Ridgy Pool	Moderate	Moderate	Fail	Moderate

*Ecological status takes into consideration biological quality elements, hydromorphological elements, physico-chemical elements and specific pollutants.

12.13 Indicator Analysis

12.13.1 Table 12.3 illustrates how local plan policies perform against indicators, where possible, comparing data from the previous year and where targets have been set out by the council.

Table 12.3: Environmental Impact (Objective 11) Indicator Performance Analysis

Policies	Indicator	Description	Comparator / Target	2021/22 Output	2022/23 Output	Performance
SP1 SP2 SP4 SP7 CDMP1 CDMP2 CDMP4	PMI 48 SAI 11/2	Number of planning permissions granted contrary to Environment Agency advice in areas at risk from flooding	None (0)	One (1)	One (1)	Amber
	PMI 49	Number of planning permissions granted contrary to Environment Agency advice on water quality grounds	None (0)	None (0)	None (0)	Green
	PMI 50	Upgrading of flood defences to 1 in 200 year standard 1) Rossall hospital to Fleetwood Golf Course 2) Fleetwood Docks to Hillhouse 3) Hillhouse to Stannah	Anticipated completion date 1)2018 2)2021 3)2021	1) Completed 2) Yet to commence 3) Yet to commence	1) Completed 2) Yet to commence 3) Yet to commence	Red
	PMI 51	Number of planning permissions incorporating Sustainable Drainage Systems (SuDS)	Monitor improvement	20	30	N/A
	PMI 52	Inappropriate development in the Coastal Change Management Area (CCMA) a) completed annually b)with extant planning permission	Monitor take up	a) None (0) b) None (0)	a) None (0) b) One (1)	N/A
	PMI 53	Number, type and amount of financial contributions through CIL and/or S106 towards flood prevention	Monitor contributions	£0	£0	N/A
	PMI 54 SAI 13/1 SAI 13/2	Measure air pollutants within Air Quality Management Areas (AQMA)	<40 ug/m ³	2020 = 20 ug/m ³	2021 = 22 ug/m ³	Green

Policies	Indicator	Description	Comparator / Target	2021/22 Output	2022/23 Output	Performance
	PMI 55	Number of total and new AQMAs designated in the Borough	Monitor change	Remains 1 AQMA No new (0)	Remains 1 AQMA No new (0)	N/A
	PMI 56 SAI 11/3	Bathing water quality	Improve to "excellent"	2021 = Good	2022 = Good	Amber
	PMI 57	Number of planning permissions granted contrary to HSE advice	None (0)	None (0)	None (0)	Green
	SAI 11/1	Rivers reaching Good Ecological Status (GES)	60% of Rivers to be Improve to 'Good' status by 2021	2019 data Good = 18%	Latest available data is from 2019	Red

12.14 Policy Conclusions

12.14.1 As is evident from the environmental impact chapter, through the implementation of indicators, the policies (SP and CDMP) are overall performing successfully and meeting the objectives set out.

12.14.2 The borough has a rich resource of environmental assets which provide significant economic, social and environmental benefits. It is important that growth proposed in the Local Plan does not adversely impact on the quality of the existing assets.

12.14.3 Bathing water quality remains at status good and there has been only one development granted contrary to the advice from the Environment Agency on flood risk or water quality grounds.

12.14.4 It was ambitious to assume that the target of 60% of rivers to improve to 'good' status by 2021 could be achieved. This is an area of concern as this is contrary to the objective of minimising pollution and this national target has not been met.

13 Society (Objective 12)

13.1 Introduction

This chapter provides an accurate indication that objective 12 of the Local Plan is being implemented correctly and successfully and monitors the performance of policies SP1, SP2, CDMP1, CDMP3 and CDMP6. These are monitored using the following Performance Monitoring Indicators (PMI); PMI58, PMI59, PMI60, PMI61 and PMI62. Sustainability Appraisal Indicators (SAI) are also used where appropriate. The Local Plan policies can be viewed in Appendix A, PMI's can be viewed in Appendix B and SAI's in Appendix C.

Objective 12 states:

“To provide the basis to work with partners and stakeholders to make Wyre an attractive place to live, work, do business and visit as an integral part of the Fylde Coast sub-region.”

13.2 PMI58 & SAI1/1 - Number and distribution of wards with LSOAs in the bottom 10% most deprived for crime deprivation

13.2.1 From 2019 data, there were a total number of three (3) wards with LSOAs in the bottom 10% most deprived for crime deprivation. Wards included; Mount, Pharos and Park.

13.3 PMI59 & SAI5/1 - Number of LSOAs in the bottom 10% most deprived for barriers to housing and services provision deprivation

13.3.1 From 2019 data, there were zero (0) LSOAs in the bottom 10% most deprived for barriers to housing and services provision deprivation.

13.4 PMI60 & SAI4/4- Number and location of wards with LSOAs in the bottom 10% nationally for Living Environment deprivation

13.4.1 From 2019 data, there were a total of two (2) wards with LSOAs in the bottom 10% nationally for living environment deprivation. Wards included; Pharos and Mount.

13.5 PMI61 & SAI6/4 - Number of wards with LSOAs in bottom 10% most deprived for income deprivation

13.5.1 From 2019 data, there were six (6) wards in the bottom 10% most deprived for income deprivation. Wards included: Rossall, Warren, Pharos, Mount, Park and Jubilee.

13.6 PMI62 & SA1/2 - Crime rates per 1,000 of the population for key offences

13.6.1 Table 13.1 contains data showing recorded crime rates for key offences in Wyre between April 2021 and March 2023. There has been a slight change in the way in which ONS release this data. Previous years have seen data released for each calendar year (Jan-Dec).

TABLE 13.1: RECORDED CRIME FOR KEY OFFENCE IN WYRE, APRIL 2021 - MARCH 2022 & APRIL 2022 – MARCH 2023 (ONS)

Offence Categorisation	April 2021 - March 2022	April 2022 - March 2023	Per 1,000 Population	% Change
Violence against the person	3,347	3,033	27.0	-9.38
Sexual Offences	276	249	2.2	-9.78
Robbery	31	27	0.2	-12.90
Theft Offences	1,828	2,014	17.9	10.18
Criminal damage and arson	871	792	7.0	-9.07
Other crimes against society	926	819	7.3	-11.56
Total recorded crime - excluding fraud	7,279	6,934	61.7	-4.74

13.6.2 As can be seen, total recorded crime has decreased (-4.74%) from the previous monitoring period. There has only been an increase in theft offences (10.18%). All other categories have seen decreases.

13.7 Indicators Analysis

13.7.1 Table 13.2 illustrates how local plan policies perform against indicators, where possible, comparing data from the previous year and where targets have been set out by the council.

Table 13.2: Society (Objective 12) Indicator Performance Analysis

Policies	Indicator	Description	Comparator / Target	2021/22 Output	2022/23 Output	Performance
SP1 SP2	PMI 58 SAI 1/1	Number and distribution of wards with LSOAs in the bottom 10% most deprived for crime deprivation	Decrease	3	3	Green
CDMP1 CDMP3 CDMP6	PMI 59 SAI 5/1	Number of LSOAs in the bottom 10% most deprived for barriers to housing and services provision deprivation	Decrease	None (0)	None (0)	Green
	PMI 60 SAI 4/4	Number and location of wards with LSOAs in the bottom 10% nationally for Living Environment deprivation	Decrease	2	2	Green
	PMI 61 SAI 6/4	Number of wards with LSOAs in bottom 10% most deprived for income deprivation	Decrease	6	6	Green
	PMI 62 SAI 1/2	Crime rates per 1,000 of the population for key offences	Decrease	April 2021 – March 2022 = 7,279	April 2022 – March 2023 = 6,934	Green

13.8 Policy Conclusions

13.8.1 Progress will become more apparent when the next data is released in relation to the indices of multiple deprivation. This will inform the council as to whether the policies (SP and CDMP) are performing effectively or not.

13.8.2 Total crime (per 100,000) across Wyre has decreased (by 4.74%) from the previous year. The most common offences are violence against the person (3,033) and theft (2,014). Areas suffering from deprivation for both crime and living environment remain the same due to the data being released on a 4-year cycle and so, further conclusions can be drawn when the new indices are published.

13.8.3 Wyre remains to be an integral part of the Fylde Coast sub-region and will continue to remain an attractive place to live and work due to the low number of wards in the lowest 10% for deprivation.

14 Progress against the Local Development Scheme (LDS)

14.1.1 Government legislation and guidance sets out the procedure for the statutory stages that councils should follow and undertake when preparing and reviewing their adopted development plan documents. The legislation does not include specifics on how councils should carry out the early stages of the preparation and consultation. The council sets out how it intends to consult in its Statement of Community Involvement.

14.1.2 Amendments to that legislation, including the publication of the Town and Country (Local Planning) (England) (Amendment) Regulations 2017, set out that Councils must review certain documents within a five year period from adoption. This monitoring report and subsequent reports could therefore act as substantial triggers for some of those reviews.

14.1.3 The current LDS was published in April 2022. It set out the timetable for the then partial update and the full review of the Local Plan. The partial update of the Local Plan was adopted by the council on 26 January 2023. Progress in preparing the full review (now referred to as the Local Plan) continues to be made.

14.1.4 An updated LDS is expected to be updated in autumn 2023, this will show the latest Local Plan timetable (table 14.1) below.

14.1.5 Table 14.1 indicates the timescales involved with the Local Plan.

Table 14.1: Local Plan Timetable

Regulation	Stage Description	Dates	Status
Reg 18	Preparation of a local plan	January 2022 to Summer 2024	Ongoing
	Scoping consultation	January 2022	Complete
	Issues and Options consultation	Summer 2024	
Reg 19	Publication of a local plan	Spring 2025	
Reg 20	Representations relating to a local plan	Spring 2025	
Reg 22	Submission of documents and information to the Secretary of State	June 2025	
Reg 23 & 24	EIP Hearing Sessions	Autumn 2025	
Reg 25	Publication of the recommendations of	Spring 2026	

Regulation	Stage Description	Dates	Status
	the appointed person ⁶		
Reg 26	Adoption of a local plan	Late summer 2026	

14.1.6 The council adopted the latest version of the Statement of Community Involvement (SCI) in April 2022.

⁶ See Procedural Practice in the Examination of Local Plans, Planning Inspectorate 2016 (4th Edition)

15 Progress against the Infrastructure Delivery Plan (IDP)

15.1.1 The IDP is a supporting document to the Wyre Local Plan 2011-2031. The IDP sets out what level of new or improved infrastructure will be required to deliver the growth proposed in the Wyre Local Plan.

15.1.2 An important part of creating sustainable communities is ensuring that the necessary supporting infrastructure is provided. The IDP identifies physical, social and environmental infrastructure.

15.1.3 Physical infrastructure includes, transport, utilities, electricity, gas, water, waste water and drainage and telecommunications. Social infrastructure includes, health, educational facilities, emergency services, cemeteries, libraries and community facilities. Environmental infrastructure includes, green infrastructure, sport, open space and recreating, flood defence attenuation and waste management and minerals production.

15.1.4 In terms of the IDP content, it is not appropriate to include every scheme or project planned by every infrastructure provider or service operator in the Borough. For this reason Table 15.1 illustrates an update on the IDP for infrastructure that has been categorised as critical.

Table 15.1: IDP update on critical projects

Infrastructure Category	Project	2023 Position
Transport – No further updates since the 2018-19 monitoring year as no response received from the highways authority.		
Transport	Skippool to windy harbour junction improvements (Bypass)	On schedule <i>Highways England</i>
Transport	Victoria road junction improvements	No change. Only due post 2025. <i>Highways England</i>
Transport	Norcross Road/Fleetwood Road junction improvements	Underway. <i>Highways England</i>
Transport	Thistleton Road/Mile Road junction improvements	No change. Only due post 2025. <i>Highways England</i>
Transport	M55 junction 3 improvements	Underway. <i>Highways England</i>
Transport	A6 Barton to Garstang Sustainable Transport Strategy	Ongoing – aligned with development coming forward
Transport	Wider Improvement of A6 Preston Lancaster New Road/Croston Barn Road/Green Lane West/B5272 Cockerham Road/Croston Road Signalised Junction	Ongoing – Part of A6 Strategy

Infrastructure Category	Project	2023 Position
Transport	Improvement of Moss Lane/Longmoor Lane Priority Junction	Part of A6 Strategy
Transport	Improvement of A6/A586, 'The Avenue' priority junction	Part of A6 Strategy
Transport	A6/M55 Jct. 1, Westbound off Slip Improvement. Additional lane on westbound off slip	Part of A6 Strategy
Transport	A6/M55Jct. 1, Eastbound off Slip Improvement. Additional lane on eastbound off slip	Part of A6 Strategy
Transport	Improvements to Hardhorn Road with Highcross Road/Beech Drive junction	Part of the Poulton Mitigation Strategy
Transport	Improvements to Hardhorn Road/Garstang Road East	Part of the Poulton Mitigation Strategy
Transport	Improvements to Garstang Road East and junction with Lower Green	Part of the Poulton Mitigation Strategy
Transport	Traffic management measures, sustainability town centre car park and town centre changes in Poulton-le-Fylde	Part of the Poulton Mitigation Strategy
Transport	Access road to residential allocation in Thornton	Requirement of SA1/2 Masterplan
Education. Update has been provided by LCC Education.		
Education	Additional primary school places in Thornton – new school	There is an ongoing dialogue around land contribution and equalisation between LCC and WBC. The application granted planning permission and has identified the location and size of a school site. This is reserved for such a purpose, if required.
Education	Additional primary school places in Poulton – new school	There is an ongoing dialogue around land contribution and equalisation between LCC and WBC. The application granted planning permission and has identified the location and size of a school site. This is reserved for such a purpose, if required.
Education	Additional primary school places in Hambleton/Stalmine – new school/extension to existing school (as required)	It was determined at application stage that no school site was required on this allocation. There is provision for land (if

Infrastructure Category	Project	2023 Position
		required) to accommodate a school expansion.
Education	Additional primary school places in Great Eccleston – new school	A Masterplan has been approved by WBC.
Education	Additional primary school places in Inskip – extension to existing school	School places to be considered as part of the planning process.
Education	Additional primary school places required in Forton - Extension to existing school	LCC has reserved land for provision of a school extension should this be needed against this development site. Conversations with the developer are taking place.
Education	Additional primary school places in Garstang – new school	Awaiting a revised Masterplan. Therefore, the exact location of the primary school is yet to be confirmed, although a proposed site is identified.
Education	Additional secondary school places - expansion of existing schools	If there is a need for secondary school places, LCC would have identified these at Local Plan stage and reiterated at individual Masterplan Consultations, as and when they were consulted on.
Healthcare. Update has been provided by the Integrated Care Board.		
Healthcare	Expansion to GP practices in Thornton and/or Poulton as necessary	Queensway relocation still under review for the Civic centre site. Phase 1 of Thornton completed. Phase 2 under discussion with Wyre council to convert part of Thornton sports centre. Plans have now been prepared.
Healthcare	Relocation of Great Eccleston GP surgery	Land secured but development cannot proceed until developer has completed all of the infrastructure, roads, drainage, utilities etc.
Healthcare	Expansion to GP practice in Garstang as necessary	Details still being agreed with Landlord. Plans prepared finances being agreed.
Healthcare	Establish GP branch surgery at Forton as necessary	Forton is no longer an option.
Flood Risk Management. Update has been provided by the Environment Agency (EA).		
Flood Risk Management	Upgrade/replace with duckbill flap Horsebridge Dyke	No update required as scheme complete.

Infrastructure Category	Project	2023 Position
Flood Risk Management	Upgrade/replace with duckbill flap Main Dyke	Not on current EA programme.
Flood Risk Management	Install new top hung flap valve at Yoad Pool outfall	On EA programme for 24/25.
Flood Risk Management	Install new top hung flap valve at Wardleys Creek outfall	Planned to be upgraded in Hambleton scheme.
Flood Risk Management	Construction of new outfall and installation of duckbill flap Ramper Pot	Not on current EA programme.
Flood Risk Management	Management and maintenance of local water courses (various locations)	Ongoing annual programme.
Community Facilities		
Community Facilities	Neighbourhood Centre including community/village hall, Forton	A Masterplan has been approved by WBC.
Community Facilities	Local convenience stores (various locations)	Retail Monitoring is currently under review.
Community Facilities	Community/village hall, including small local convenience store, Great Eccleston	A Masterplan has been approved by WBC.

15.1.5 With regards to those non critical infrastructure projects, and also categories including telecoms, energy, water and wastewater, emergency services and cemeteries – the council is considering methodology to be implemented in order to monitor the progress. This is due to these services coming forward by the relevant service provider as and when they are required.

16 Duty to Co-operate

16.1.1 The Localism Act (2011) imposes a duty on councils to co-operate with other councils and bodies on planning issues that cross administrative boundaries. Paragraph 25 of the National Planning Policy Framework (2023) (NPPF) outlines:

“Strategic Policy-making authorities should collaborate to identify the relevant strategic matters which they need to address in their plans.”

16.1.2 Those strategic priorities identified as requiring cross boundary cooperation include:

- Housing (including affordable housing), employment, retail, leisure and other commercial development.
- Infrastructure for transport, telecommunications, security, waste management, water supply, wastewater, flood risk and coastal change management, and the provision of minerals and energy (including heat).
- Community facilities (such as health, education and cultural infrastructure)
- Conservation and enhancement of the natural, built and historic environment, including landscapes and green infrastructure, and planning measures to address climate change mitigation and adaptation.

16.1.3 NPPF Paragraph 27 states that:

“In order to demonstrate effective and on-going joint working, strategic policymaking authorities should prepare and maintain one or more statements of common ground, documenting the cross-boundary matters being addressed and progress in cooperating to address these.”

16.1.4 The duty seeks to ensure that all of the bodies involved in planning and development work cohesively on issues that are bigger than local significance.

16.1.5 Figure 16.1 illustrates neighbouring local authorities to Wyre. Other bodies most relevant to Wyre include:

National Highways;

Environment Agency;

English Heritage;

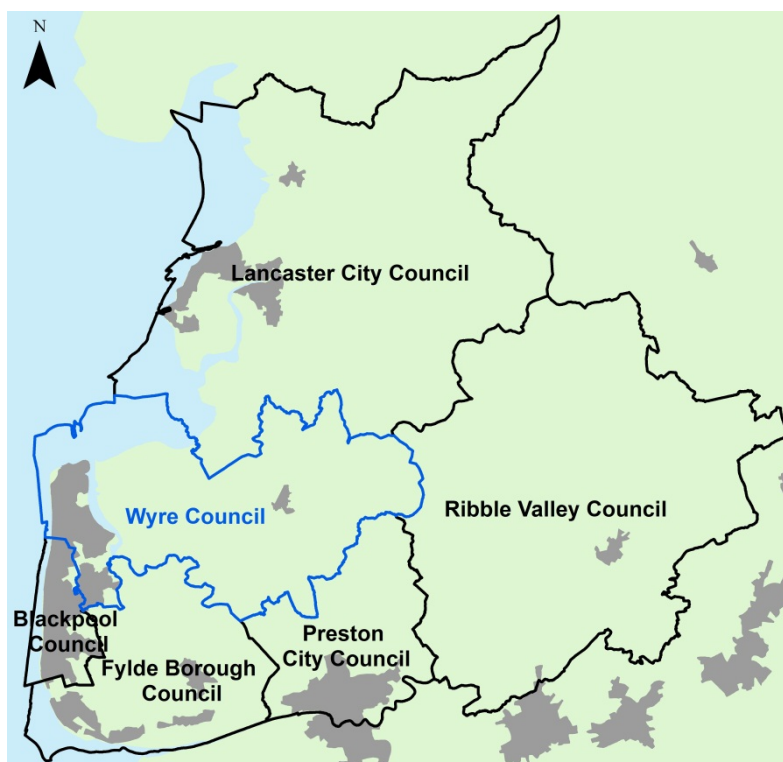
Natural England;

Integrated Care Board;

Lancashire County Council as Local Highway Authority, Local Education Authority and Local Lead Flood Authority;

Marine Management Organisation.

Figure 16.1 – Neighbouring Authorities to Wyre Council



16.1.6 Local authorities are also required to have regard to Local Enterprise Partnerships and Local Nature Partnerships. Those of relevance to Wyre are:

- Lancashire Local Enterprise Partnership;
- Lancashire Local Nature Partnership; and
- Morecambe Bay Local Nature Partnership.

16.1.7 The Town and Country (Local Plan) (England) Regulations 2012 require the Duty to Cooperate to be monitored as part of the AMR. The council submitted a Duty to Co-operate Statement of Compliance which set out the background to the Partial Update, the pertinent strategic matters, and an overview of the engagement and cooperation that has taken place. The Local Inspector was satisfied that the council had met the legal requirement to co-operate as the council had engaged constructively, actively and on an on-going basis in the preparation of the Plan. The Inspector's Report can be found here: <https://www.wyre.gov.uk/planning-policy/local-plan-partial-review-2011-2031-1/6>

16.1.8 The Duty to cooperate is on-going and the council remains engaged in ongoing collaborative working under Duty to Co-operate with adjoining local authorities and other bodies.

16.1.9 The council are currently fulfilling the Duty to Cooperate in the following ways:

- Under the Fylde Coast Memorandum of Understanding between Blackpool, Fylde and Wyre councils and Lancashire County Council, the council has

continued to have regular meetings with Fylde and Blackpool councils and Lancashire County Council in relation to cross boundary matters.

- Through joint evidence gathering with neighbouring authorities where appropriate.
- Through the operation of various stakeholder and topic based working groups such as the Making Space for Water, Wyre Flood Forum and Forest of Bowland AONB Partnership Group.
- Officers from the council's Planning Policy team attend meetings with LCC Highways and Education Authorities, the Lancashire and South Cumbria ICB and National Highways as required discussing strategic matters.
- Council officers also attend the Lancashire Planning Policy Officers Group and Lancashire Economic Development Officer Group. The groups are made up of representatives from each of the planning policy and economic development teams across Lancashire and the County Council and meet quarterly to discuss various strategic issues.

17 Neighbourhood Planning

17.1.1 Neighbourhood planning gives town and parish councils or newly formed neighbourhood forums the opportunity to prepare, with the community they represent, a planning document to shape the future of the places where they live and work. Neighbourhood planning allows communities to set planning policies through a neighbourhood development plan or grant planning permission through a neighbourhood development order. A neighbourhood plan cannot be used to prevent or stifle development.

At the start of the neighbourhood planning process, the neighbourhood area which the community intend to produce a plan for has to be formally agreed. The neighbourhood planning regulations set out the detailed process for the preparation of neighbourhood plans. Once a neighbourhood plan is 'made' (adopted) it becomes part of the statutory development plan for that area and is used alongside local and national planning policy and guidance to determine planning applications within the neighbourhood area.

17.1.2 As can be seen in Table 17.1, at 31st March 2023, there remains to be three approved neighbourhood plans in Wyre. No new neighbourhood areas have been submitted for the monitoring year 2022-23.

17.1.3 The Barton Neighbourhood Plan is the only Plan to have progressed from the early stage of designation of the neighbourhood area. It was submitted to the local authority in November 2022. Following public consultation an Independent Examiner was appointed and the Plan and consultation responses received by the local authority were submitted to the Examiner. The formal process of Independent Examination of the Barton Neighbourhood Plan commenced in March 2023.

Table 17.1: Neighbourhood plan status at 31st March 2023

Neighbourhood Plan	Neighbourhood area applicants	Neighbourhood Area Status	Neighbourhood Plan Stage
Dolphinholme Neighbourhood Plan	Nether Wyresdale and Ellel Parish Council	Approved – 1 February 2017	-
Barton Village Neighbourhood Area	Barton and Myerscough and Bilsborrow Parish Council	Approved – 8 September 2017	Independent Examination (June 2023)
Garstang Neighbourhood Plan	Garstang Town Council	Approved - 28 February 2018	-

17.1.4 More information is available on the council's website using the link below.

<https://www.wyre.gov.uk/local-plan/neighbourhood-plans/1>

18 Self-build and custom build housing

18.1.1 The Government wants to enable more people to build their own home and Local Planning Authorities in England and Wales are required under the Self-build and Custom House building Act 2015 (c.17) to keep a register of individuals and associations of individuals seeking to acquire land to build a home.

18.1.2 In keeping a register, Wyre Council is under no obligation to find or provide registered individuals with self-build or custom build plots. The register is not a public document and is treated as confidential. However, the council does publish headline data (i.e. location, type and/or demand) from the register. The council will use the register to inform policies in the emerging Local Plan.

18.1.3 Table 18.1 displays a varied selection of headline data of registered applicants. At 31st March 2023, Wyre had sixteen (16) individuals registered. This is an increase of two from the previous monitoring year, 2021-2022.

Table 18.1: Headline data from Wyre Self-build Register

Registered individual/associations	Type of build	Preferred area(s)	Type of dwelling	Bedrooms
Individual (single plot)	Self-build one off home	Barton or Bilsborrow	Detached with large garden	5
Individual (single plot)	Contractor built one off-home, Kit or package home	Stalmine	Detached with large garden	3 or 4

18.1.4 At 31st March 2023, there was extant planning permission for 23 new build dwellings on single dwelling plots.

18.1.5 Please note that approvals for conversions, changes of use, mobile/park homes, blocks of flats and sheltered housing units (where known) were excluded from the figures, as were any dwellings which were already under construction.

18.1.6 Further information is available on the Councils website using the link below.

<https://www.wyre.gov.uk/general-information/self-build-custom-build-register/1>

19 Brownfield Register

19.1.1 The government wants to maximise the number of new homes built on brownfield (previously developed) land and has therefore made a commitment to introduce local brownfield registers through the Town and Country Planning (Brownfield Land Register) Regulations 2017.

The councils register (provided in a standard format set nationally) provides publicly available information on brownfield sites that are suitable for housing.

At the time of writing, there are currently 20 sites on the register. The register is updated at least once per annum. The register and associated map is available using the link below.

<https://www.wyre.gov.uk/general-information/brownfield-land-register/1>

19.1.2 The sites that have been identified are considered to be suitable, available, achievable, and have an area of at least 0.25ha or are capable of supporting at least five dwellings.

Appendix A: Schedule of Local Plan Policies

Strategic Policies (SP)

- SP1 – Development Strategy
- SP2 – Sustainable Development
- SP3 – Green Belt
- SP4 – Countryside Areas
- SP5 – Forest of Bowland AONB
- SP6 – Viability
- SP7 – Infrastructure provision & Developer contributions
- SP8 – Health and wellbeing

Core Development Management Policies (CDMP)

- CDMP1 – Environmental protection
- CDMP2 – Flood Risk and Surface water management
- CDMP3 – Design
- CDMP4 – Environmental Assets
- CDMP5 – Historic Environment
- CDMP6 – Accessibility and Transport

Housing Policies (HP)

- HP1 – Housing Land Supply
- HP2 – Housing Mix
- HP3 – Affordable Housing
- HP4 – Rural Exceptions
- HP5 – Residential Curtilages
- HP6 – Replacement dwellings in the countryside
- HP7 – Rural workers accommodation in the countryside
- HP8 – Accommodation for Gypsy, travellers and travelling show people
- HP9 – Green Infrastructure in new residential developments
- HP10 – Houses in multiple occupation

Economy Policies (EP)

- EP1 – Employment Land Supply
- EP2 – Existing Employment Areas
- EP3 – Existing Employment sites
- EP4 – Town, District, Local and Neighbourhood centres
- EP5 – Main Town Centre uses
- EP6 – Development in defined primary and secondary frontages
- EP7 – Local convenience stores
- EP8 – Rural Economy
- EP9 – Holiday accommodation
- EP10 – Equestrian Development
- EP11 – Protection of community facilities
- EP12 – Renewable Energy
- EP13 – Telecommunications
- EP14 – Outdoor advertisements and directional signs
- EP15 – Security Shutters

Appendix B: Schedule of Performance Monitoring Indicators (PMIs)

Performance Monitoring Indicators (PMI)		Target /Outcomes	Strategic Policies (SP)	Core Development Management Policies (CDMP)	Housing (HP)	Economy (EP)
Objective 1						
PMI1	Available employment land, by area (ha)	No target, monitor availability	1			1
PMI2	Amount of gross employment land (Ha) and net floorspace (smq) developed, by type: a) on allocated employment sites (including mix use) b) in existing employment areas c) Hillhouse Technology Enterprise Zone d) other	43 hectares	1, 2			1, 2, 3, 8
PMI3	Amount of gross employment land (Ha) and net floorspace (sqm) with extant planning permission, by type: a) on allocated employment sites (including mix use)	To meet requirements	1, 2			1,2, 3, 8

Performance Monitoring Indicators (PMI)		Target /Outcomes	Strategic Policies (SP)	Core Development Management Policies (CDMP)	Housing (HP)	Economy (EP)
	b) in existing employment areas c) Hillhouse Technology Enterprise Zone d) other					
PMI4	Amount of gross employment land (Ha) and net floorspace (sqm) lost to alternative uses (non B use class): a) on allocated employment sites (including mix use) b) in existing employment areas c) Hillhouse Technology Enterprise Zone (regarding employment sites only) d) other	No overall loss				1, 2, 3
PMI5	Number of wards with LSOAs in bottom 10% most deprived for employment deprivation	Decrease over plan period	1, 2			
Objective 2						

Performance Monitoring Indicators (PMI)		Target /Outcomes	Strategic Policies (SP)	Core Development Management Policies (CDMP)	Housing (HP)	Economy (EP)
PMI6	Number, type and amount of financial contributions through CIL and/or S106 towards education	No Target. Monitor contributions	7			
PMI7	Number and distribution of wards with LSOAs in the bottom 10% nationally for education, skills and training deprivation	Decrease over plan period	1			
Objective 3						
PMI8	5 year supply of deliverable housing	100% as set out in the latest HIS			1	
PMI9	Housing Trajectory: a) completions in previous years (since 2011) b) completions in reporting year c) extant planning permission from current year (up to 2031) d) managed delivery target	Meet local minimum target of providing 9,285 net new homes 2011-2031 (464 per annum)	1		1	
PMI10	Net additional dwellings on each housing allocation	Monitor take up against the housing trajectory as set out in the latest HIS	1		1	

Performance Monitoring Indicators (PMI)		Target /Outcomes	Strategic Policies (SP)	Core Development Management Policies (CDMP)	Housing (HP)	Economy (EP)
	a) completions since 2011 b) with extant planning permission					
PMI11	% and amount of affordable homes, by type and settlement: a) completed annually b) with extant planning permission c) financial contributions	Measure % against Local Plan Policy Standards, by settlement	1, 2, 7		3, 7	
PMI12	Percentage and number of major developments providing housing for older people and people with restricted mobility	20% of 20+ dwellings	1, 2		2	
PMI13	Net additional dwellings, by size, type and tenure: a) in current year b) with extant planning permission	Monitor take up/change			2	
PMI14	Amount of permanent and transit pitch	Monitor take up	1, 2		8	

Performance Monitoring Indicators (PMI)		Target /Outcomes	Strategic Policies (SP)	Core Development Management Policies (CDMP)	Housing (HP)	Economy (EP)
	provision for gypsies and travellers					
PMI15	Amount of permanent plot provision for travelling showpeople	To meet locally identified need (GTAA as minimum)	1, 2		8	
PMI16	Number of buildings converted in to Houses of Multiple Occupancy (HMOs)	Monitor take up			10	
Objective 4						
PMI17	Net additional retail floorspace developed, by type: a) in town centres b) in primary shopping areas c) in district, local and neighbourhood centres d) other	No Target. Monitor take up	2			4, 5, 6, 7, 8
PMI18	Net additional retail floorspace with extant planning permission, by type: a) in town centres b) in primary shopping areas c) in district, local and	No Target. Monitor take up	2			4, 5, 6, 7, 8

Performance Monitoring Indicators (PMI)		Target /Outcomes	Strategic Policies (SP)	Core Development Management Policies (CDMP)	Housing (HP)	Economy (EP)
	neighbourhood centres d) other					
PMI19	Changes to defined primary and secondary shopping frontages	Monitor change				6
PMI20	Ground floor vacancy rates for Cleveleys, Fleetwood, Garstang, Poulton and Thornton	No Target. Monitor change	2			4
Objective 5						
PMI21	Percentage of new dwellings approved within 1km of key services	Monitor take up	2			
PMI22	Number, type and amount of financial contributions through CIL and/or S106 towards health care	No Target. Monitor contributions	7			
PMI23	Number, type and amount of financial contributions through CIL and/or S106 towards other infrastructure	No Target. Monitor contributions	7			

Performance Monitoring Indicators (PMI)		Target /Outcomes	Strategic Policies (SP)	Core Development Management Policies (CDMP)	Housing (HP)	Economy (EP)
PMI24	Number of community facilities, by type and settlement: a) completed annually b) with extant planning permission c) loss to alternative uses	No target. Monitor change				11
Objective 6						
PMI25	Length of total and new dedicated pedestrian and cycle routes	Increase	2, 7, 8	3, 6		
PMI26	No. of developments receiving planning permission with agreed travel plan	No target		6		
PMI27	Number, type and amount of financial contributions through CIL and/or S106 towards highways	No Target. Monitor contributions	1, 7	6		
PMI28	Percentage and number of new dwellings built within 1km of a bus stop	Monitor take up	2	6		
Objective 7						

Performance Monitoring Indicators (PMI)		Target /Outcomes	Strategic Policies (SP)	Core Development Management Policies (CDMP)	Housing (HP)	Economy (EP)
PMI29	Number and change in areas of biodiversity, geological and landscape importance (i.e. loss or additions (ha) of AONB, SSSIs, GHS, BHS etc.)	No Loss (ha)	1, 2, 5	4		
PMI30	Amount of new development within areas of biodiversity, geological and landscape importance: a) completed annually b) with extant planning permission	No development unless justified	1,2, 5, 7	4		
PMI31	Condition of SSSIs	95% of SSSIs in favourable or recovering condition	1, 2	4		
PMI32	Number of Biological Heritage Sites (BHS) under active management.	Monitor over plan period	1, 2	4		
PMI33	Loss of the best and most versatile agricultural land*	No target. Monitor loss	1, 2	4		
PMI34	Gain/Loss/Number of: a) conservation Areas b) scheduled monuments	Monitor Change		5		

Performance Monitoring Indicators (PMI)		Target /Outcomes	Strategic Policies (SP)	Core Development Management Policies (CDMP)	Housing (HP)	Economy (EP)
	c) listed buildings d) parks and Gardens					
PMI35	Number of scheduled monuments and listed buildings considered to be at risk	No increase		5		
Objective 8						
PMI36	Number of new developments (by type) in the Green Belt: a) completed annually b) with extant planning permission	No development unless justified	2, 3			
PMI37	Number of new developments (by type) in the Countryside: a) completed annually b) with extant planning permission	No development, unless justified	1, 2, 4		4, 5, 6, 7	8
Objective 9						
PMI38	Length of total and new dedicated public rights of way (PROW)	Increase	2, 7, 8	3, 4, 6		
PMI39	Number of total and new green flag status parks	Increase over plan period	1, 2	4		

Performance Monitoring Indicators (PMI)		Target /Outcomes	Strategic Policies (SP)	Core Development Management Policies (CDMP)	Housing (HP)	Economy (EP)
PMI40	Amount of Green Infrastructure lost to development (ha)	No Loss (ha)	1, 2	4	9	
PMI41	Amount of new green infrastructure (including public open space) provided through new development: a) on-site b) off-site contributions through CIL and/or S106 agreements	Monitor provision/contributions against Local Plan Policy Standards	1, 7,8	3, 4	9	
PMI42	Number of open space sites above 80% quality score	Increase over plan period	1, 2	3, 4	9	
PMI43	Number of wards with LSOAs in the bottom 10% most deprived for health deprivation	Decrease over plan period	1, 2, 8			
PMI44	Number of Health Impact Assessments (HIA)	Monitor take up	8			
Objective 10						
PMI45	Per capita amount of CO2 emissions in the LA area	No target, monitor change				12

Performance Monitoring Indicators (PMI)		Target /Outcomes	Strategic Policies (SP)	Core Development Management Policies (CDMP)	Housing (HP)	Economy (EP)
PMI46	New renewable energy installations, by type (Feed in tariff in MW)	Increase	2			12
PMI47	Number of Electric Vehicle Recharging Points	Increase over plan period	2	1, 6		12
Objective 11						
PMI48	Number of planning permissions granted contrary to Environment Agency advice in areas at risk from flooding	None (0)	2	2		
PMI49	Number of planning permissions granted contrary to Environment Agency advice on water quality grounds	None (0)	2	2		
PMI50	Upgrading of flood defences to 1 in 200 year standard at: 1) Rossall Hospital to Fleetwood Golf Course 2) Fleetwood Docks to Hillhouse 3) Hillhouse to Stanah	Anticipated Completion by 1) 2018 2) 2021 3) 2021	2, 7	2		

Performance Monitoring Indicators (PMI)		Target /Outcomes	Strategic Policies (SP)	Core Development Management Policies (CDMP)	Housing (HP)	Economy (EP)
PMI51	Number of planning permissions incorporating SuDS	No Target. Monitor improvement	2, 7	2		
PMI52	Inappropriate development in the Coastal Change Management Area: a) completed annually b) with extant planning permission	Monitor take up	4			
PMI53	Number, type and amount of financial contributions through CIL and/or S106 towards flood prevention	No Target. Monitor contributions	7	2		
PMI54	Measure air pollutants within Air Quality Management Areas (AQMA)	Monitor change	1	1		
PMI55	Number of total and new AQMAs designated in the Borough	Monitor change		1		
PMI56	Bathing water quality	Improve to 'Excellent' rating	1	4		

Performance Monitoring Indicators (PMI)		Target /Outcomes	Strategic Policies (SP)	Core Development Management Policies (CDMP)	Housing (HP)	Economy (EP)
PMI57	Number of planning permissions granted contrary to HSE advice	None (0)		1		
Objective 12						
PMI58	Number and distribution of wards with LSOAs in the bottom 10% most deprived for crime deprivation.	Decrease over plan period	1	3		
PMI59	Number of LSOAs in the bottom 10% most deprived for barriers to housing and services provision deprivation.	Decrease over plan period	1, 2	6		
PMI60	Number and location of wards with LSOAs in the bottom 10% nationally for Living Environment deprivation	Decrease over plan period	1, 2	1		
PMI61	Number of wards with LSOAs in bottom 10% most deprived for income deprivation	Decrease over plan period	1			
PMI62	Crime rates per 1,000 of the population for key offences.	Decrease over plan period		3		

Appendix C: Schedule of Sustainability Appraisal Indicators (SAI)

SAI Ref	Objective	Sustainability Appraisal Indicator	Target - to be refined and developed further to best fit monitoring of the local plan
SAI1/1	To reduce crime, disorder and fear of crime	Number and distribution of wards with LSOAs in the bottom 10% most deprived for crime deprivation.	Reduce the number of wards with LSOAs in the bottom 30% most deprived
SAI1/2	To reduce crime, disorder and fear of crime	Crime rates per 1,000 of the population for key offences.	Reduce the number of crimes per 1,000 population
SAI2/1	To improve levels of educational attainment for all age groups and all sectors of society	Number and distribution of wards with LSOAs in the bottom 10% nationally for education, skills and training deprivation	Ensure sufficient school places are available to meet the needs of new development
SAI2/2	To improve levels of educational attainment for all age groups and all sectors of society	Location and number of school places available	Ensure sufficient school places are available to meet the needs of new development
SAI2/3	To improve levels of educational attainment for all age groups and all sectors of society	% of working age residents with national vocational qualifications (NVQs)	Ensure sufficient school places are available to meet the needs of new development
SAI3/1	To improve physical and mental health and wellbeing for all and reduce health inequalities	Percentage of resident population who consider themselves to be in good health	Reduce the number of wards with LSOAs in the bottom 10% most deprived for health deprivation
SAI3/2	To improve physical and mental health and wellbeing for all and reduce health inequalities	Number of wards with LSOAs in the bottom 10% most deprived for health deprivation	Reduce the number of wards with LSOAs in the bottom 10% most deprived for health deprivation

SAI Ref	Objective	Sustainability Appraisal Indicator	Target - to be refined and developed further to best fit monitoring of the local plan
SAI3/3	To improve physical and mental health and wellbeing for all and reduce health inequalities	Percentage of new dwellings within 1km of key services	Reduce the number of wards with LSOAs in the bottom 10% most deprived for health deprivation
SAI3/4	To improve physical and mental health and wellbeing for all and reduce health inequalities	Number of open space sites within 80% quality score.	Target (if appropriate to the indicator) to be developed
SAI3/5	To improve physical and mental health and wellbeing for all and reduce health inequalities	Length of new dedicated pedestrian and cycle routes	Target (if appropriate to the indicator) to be developed
SAI4/1	To ensure housing provision meets local needs	Net additional dwellings on each housing allocation	Annual dwelling completions against requirement target of 460 per annum.
SAI4/2	To ensure housing provision meets local needs	Net additional dwellings by size, type and tenure	Number of homes within developments of 11 or more designed to specifically accommodate or adaptable for older people
SAI4/3	To ensure housing provision meets local needs	% and number of affordable homes by type and settlement	Number of market housing schemes of 10 or more dwellings that provide 30% affordable homes
SAI4/4	To ensure housing provision meets local needs	Number and location of wards with LSOAs in the bottom 10% nationally for Living Environment deprivation	Reduce number of wards with LSOAs in bottom 10% for living environment deprivation
SAI4/5	To ensure housing provision meets local needs	Percentage of vacant dwellings (C3)	Decrease number of vacant dwellings

SAI Ref	Objective	Sustainability Appraisal Indicator	Target - to be refined and developed further to best fit monitoring of the local plan
SAI4/6	To ensure housing provision meets local needs	Amount of permanent and transit pitch provision for gypsies, travellers and travelling showpeople.	Target (if appropriate to the indicator) to be developed
SAI4/7	To ensure housing provision meets local needs	Amount of permanent plot provision for travelling showpeople	Target (if appropriate to the indicator) to be developed
SAI5/1	To improve sustainable access to basic goods, services and amenities for all groups]	Number of LSOAs in the bottom 10% most deprived for barriers to housing and services provision.	Reduce number of wards with LSOAs in bottom 10% for barriers to housing and services provision
SAI5/2	To improve sustainable access to basic goods, services and amenities for all groups]	Percentage and number of new dwellings built within 1km of a bus stop	Target (if appropriate to the indicator) to be developed
SAI5/3	To improve sustainable access to basic goods, services and amenities for all groups]	Length of Public Rights of Way (PROW)	No loss of PROW
SAI6/1	To encourage sustainable economic growth, inclusion and business development across the borough	Economic activity rate	Target (if appropriate to the indicator) to be developed
SAI6/2	To encourage sustainable economic growth, inclusion and business development across the borough	Percentage of employment and occupation	Target (if appropriate to the indicator) to be developed

SAI Ref	Objective	Sustainability Appraisal Indicator	Target - to be refined and developed further to best fit monitoring of the local plan
SAI6/3	To encourage sustainable economic growth, inclusion and business development across the borough	Available of employment land	Target (if appropriate to the indicator) to be developed
SAI6/4	To encourage sustainable economic growth, inclusion and business development across the borough	Number of wards with LSOAs in bottom 10% most deprived for employment deprivation and income deprivation	To reduce number of wards with LSOAs in the bottom 10% for employment and income deprivation.
SAI6/5	To encourage sustainable economic growth, inclusion and business development across the borough	Employment land take-up	Cumulative take-up of land for employment development to plan period requirement of 43ha.
SAI6/6	To encourage sustainable economic growth, inclusion and business development across the borough	Retail take-up	Target (if appropriate to the indicator) to be developed
SAI7/1	To deliver urban renaissance	Indicators proposed for other objectives should be monitored as they all make a contribution to the achievement of this SA Objective.	n/a
SAI8/1	To protect and enhance biodiversity	Number and change in areas of biodiversity, geological importance and landscape	Maintain and improve condition of designated sites
SAI8/2	To protect and enhance biodiversity	Condition of SSSIs	Increase area of habitat provided across the district No net loss of biodiversity

SAI Ref	Objective	Sustainability Appraisal Indicator	Target - to be refined and developed further to best fit monitoring of the local plan
SAI8/3	To protect and enhance biodiversity	Number of BHSs under Active Management.	Increase area of habitat provided across the district No net loss of biodiversity
SAI8/4	To protect and enhance biodiversity	Areas ancient woodland	No loss of ancient woodland as a result of new development
SAI9/1	To protect and enhance the borough's landscape and townscape character and quality	Amount of green infrastructure lost to development	No net loss of green infrastructure to development (without appropriate mitigation).
SAI9/2	To protect and enhance the borough's landscape and townscape character and quality	Number and total of Green Flag Award parks	Increase number of Green Flag Award parks
SAI9/3	To protect and enhance the borough's landscape and townscape character and quality	Some biodiversity indicators are also relevant in relation to greenspace access.	n/a
SAI10/1	To protect and enhance the cultural heritage resources	Gain/loss/number of heritage assets	No loss of Listed Buildings, Scheduled Monuments, Conservation Areas and Registered Parks and Gardens

SAI Ref	Objective	Sustainability Appraisal Indicator	Target - to be refined and developed further to best fit monitoring of the local plan
SAI10/2	To protect and enhance the cultural heritage resources	Number of scheduled monuments and listed buildings at risk	Reduce number of heritage assets at risk
SAI11/1	To protect and enhance the quality of water features and resources and reduce the risk of flooding	Rivers reaching Good Ecological Status	Prevent deterioration of the status of all surface water and groundwater bodies Protect, enhance and restore all bodies of surface water and groundwater with the aim of achieving Good Status for surface water and groundwater
SAI11/2	To protect and enhance the quality of water features and resources and reduce the risk of flooding	Number of planning applications granted permission contrary to Environment Agency advice regarding flooding.	No planning permissions to be granted contrary to EA advice on flooding
SAI11/3	To protect and enhance the quality of water features and resources and reduce the risk of flooding	Bathing water quality	To meet EU bathing water standards
SAI12/1	To limit and adapt to climate change	Local rail patronage	Rail usage to increase
SAI12/2	To limit and adapt to climate change	Indicators used to monitor the implementation of the Local Transport Plan	Targets to be developed
SAI12/3	To limit and adapt to climate change	Number of Electric Vehicle Recharging Points	Increase

SAI Ref	Objective	Sustainability Appraisal Indicator	Target - to be refined and developed further to best fit monitoring of the local plan
SAI13/1	To protect and improve air quality	Number and distribution of Air Quality Management Areas (AQMAs).	No new AQMAs to be designated in the Borough. Achievement of UK Air Quality Strategy objectives for specific pollutants
SAI13/2	To protect and improve air quality	Local air quality monitoring results for nitrogen and particulates	No new AQMAs to be designated in the Borough. Achievement of UK Air Quality Strategy objectives for specific pollutants
SAI14/1	To ensure sustainable use of natural resources	Impact of new development on Mineral Safeguarding Areas and number of appropriate surveys taken prior to development.	n/a

Appendix D: Glossary of terms and abbreviations

Appropriate Assessment: An appropriate assessment, also known as a Habitat Regulation Assessment is required in order to assess the potential effect of the Local Plan on the integrity of a Natura 2000 site e.g. Special Protection Area (SPA) or Special Areas of Conservation (SAC).

Area of Outstanding Natural Beauty (AONB): AONB's are designated by the Countryside Agency. They represent the nation's finest landscapes. They are designed to safeguard and enhance their natural beauty.

Authorities Monitoring Report (AMR): A report produced by a local planning authority that assesses the progress and the effectiveness of specified planning policies in development plan documents. It also includes a review of the Local Development Scheme's (LDS) timetable.

Biological Heritage Site (BHS): In Lancashire, Local Authorities are required to identify and provide protection to the natural heritage within their districts. These are the most important non-statutory wildlife sites. For example; ancient woodland, species rich grassland and bogs.

Coastal Change Management Area (CCMA): An area identified in Local Plans as likely to be affected by coastal change (physical change to the shoreline through erosion, coastal landslip, permanent inundation or coastal accretion).

Community Infrastructure Levy (CIL): The Community Infrastructure Levy (CIL) is a new charge that local authorities have the power to levy on most types of development to fund infrastructure required to support new growth such as transport, education, health and open space facilities. CIL chargers are based on the size and types of development proposed and are calculated as a charge per square metre.

Conservation Areas: areas formally designated by local planning authorities for their special architectural or historical interest.

Department for Business, Energy and Industrial Strategy (BEIS): BEIS was established July 2016 and brings together responsibilities for business, industrial strategy, science, innovation, energy, and climate change, merging the functions of the former BIS and DECC.

Department for Communities and Local Government (DCLG): DCLG is the Government Department responsible for planning matters, with the responsibility to promote community cohesion and equality, as well as housing, urban regeneration, planning and local government.

Department for Energy Security and Net Zero (DESNZ): DESNZ is the Government Department responsible for delivering security of energy supply, ensuring properly functioning energy markets, encouraging greater energy efficiency and promoting net zero.

Department for Environment, Food and Rural Affairs (DEFRA): DEFRA is a Government Department in the UK.

Department for Transport (Dft): The Dft provides leadership across the transport sector to achieve a transport system, which balances the needs of the economy, the environment and society.

Development Plan Document (DPD): A document identifying the Council's planning policies and proposals. Development Plan Documents include the Local Plan, Site-Specific Allocations Documents, Area Action Plans and Proposals Map. They are subject to community involvement, consultation and independent examination. A sustainability appraisal is required for each development plan document.

Duty to Co-operate: a legal duty on local planning authorities to engage constructively and actively to address strategic cross-boundary matters in preparing Local Plans.

English Heritage: English Heritage is a registered charity that manages over 400 of England's Historic buildings, monuments and sites.

Environment Agency (EA): The Environment Agency is a government body responsible for protecting and improving the effects of pollution on the environment in England and Wales. To make sure that air, land and water are looked after.

Equality Impact Assessment (EqIA): and EqIA is a systematic way of examining whether a new or existing function, policy or process differentially affects any person or group of persons.

Evidence Base: The information and data gathered by the local planning authority to justify the policy approach set out in the Local Plan.

Examination: The local planning authority must submit the Local Plan for examination. The examination is carried out by an independent Planning Inspector to consider whether the local plan is 'sound' and meets the 'legal compliance'.

Green Belt: An area of land largely around built up areas designated to protect the land from development. The purposes are to restrict urban sprawl safeguard the countryside, preserve the character of historic towns and to encourage the use of Brownfield sites for development.

Greenfield Site: Land not previously developed (PDL), usually agricultural land.

Habitats Regulation Assessment: Please see *Appropriate Assessment*.

Health Impact Assessment (HIA): A combination of procedures, methods and tools by which a policy, programme or project may be judged as to its potential effects on the health of a population and the distribution of those effects within the population.

Highways Authority: A highway authority is a name given to a body responsible for the administration of public roads. In Lancashire, LCC are the highway authority.

Highways England: Highways England is the government company responsible for operating, maintaining and improving the strategic road network of England.

Homes and Community Agency (HCA): The HCA is the non-departmental public body that helps fund new affordable housing and regulates social housing providers in

England. They also help create successful communities by making more homes and business premises available to residents and business who need them.

Index of Multiple Deprivation (IMD): The IMD is a set of six indicators (income; employment; health deprivation and disability; education; skills and training; housing; and geographical access to services) to help identify areas for regeneration, at ward level.

Infrastructure Delivery Plan (IDP): The IDP is a plan produced in parallel to preparing the Local Plan which assess the impacts of the proposed development on infrastructure and sets out the necessary infrastructure required to support proposed development.

Integrated Care Board (ICB): ICBs are statutory bodies that are responsible for planning and funding most NHS services in an area. They replaced clinical commissioning groups in the NHS in England from 1 July 2022.

Lancashire County Council (LCC): LCC is the upper-tier (part of a 'two tier' system of local government) local authority for the non-metropolitan county of Lancashire. Residents who live in Lancashire (excluding Blackpool Council and Blackburn with Darwen Borough Council) will also have a district council providing some of the council services.

Local Development Documents (LDDs): These include any document within the Local Development Framework, They comprise Development Plan Documents, Supplementary Planning Documents and the Statement of Community Involvement.

Local Development Scheme (LDS): The LDS is a three-year programme, which shows the councils time scale for the preparation and production of Local Development Documents.

Local Geodiversity Sites (LGSs): LGSs are protected in the same way as important biological sites, to recognise and protect the importance of certain landforms.

Localism Act: A major piece of new legislation, which includes wide-ranging changes to local government, housing and planning. Significantly, the Act abolishes regional planning, and introduces the possibility of Neighbourhood Plans as part of the development plan.

Local Plan (2011-2031) (incorporating partial update of 2022): On 26 January 2023 Wyre Council adopted the Wyre Local Plan (2011-2031) (incorporating partial update of 2022). Wyre's new Local Plan is a revised replacement of the Wyre Local Plan (2011-2031) retaining all of its policies except those revised by the partial update.

Lower Layer Super Output Area (LSOA): a geographic hierarchy designed to improve the reporting of small area statistics in England and Wales.

Marine Management Organisation (MMO): The MMO is an executive non-departmental public body in the United Kingdom which license, regulate and plan marine activities in the seas around England so that they're carried out in a sustainable way.

National Planning Policy Framework (NPPF): The NPPF sets out the Government's planning policies for England and how these are expected to be applied. It sets out the Government's requirements for the planning system only to the extent that it is relevant, proportionate and necessary to do so. It provides a framework within which local people and their accountable councils can produce their own distinctive local and neighbourhood plans, which reflect the needs and priorities of their communities.

Natural England (NE): NE was formed in 2006 and is a non-departmental public body sponsored by DEFRA. It is responsible for ensuring that England's natural environment, including its land, flora and fauna, freshwater and marine environments, geology and soils, are protected and improved. It also has a responsibility to help people enjoy, understand and access the natural environment.

Neighbourhood Planning: gives town and parish councils or newly formed neighbourhood forums the opportunity to prepare with the community they represent a planning document to shape the places where they live and work.

Office for National Statistics (ONS): ONS is the executive office of the UK statistics Authority and is the UK Government's single largest statistical producer. ONS produces independent information to improve our understanding of the UK's economy and society.

Office of Rail and Road (ORR): As of 1 April 2015, the ORR is the economic regulator of Britain's mainline railway and health and safety regulator on Britain's railways. They also monitor England's Strategic Highways network. It was previously the Office of Rail Regulation.

Previously Developed Land (PDL), also known as Brownfield: Land previously developed on or was occupied by a permanent structure. Usually associated with derelict urban land. Excludes agriculture or forestry land and previously used land which now has nature conservation or recreation value.

Public Health England (PHE): PHE was established on 1 April 2013 to bring together public health specialists from more than 70 organisations into a single public health service. They are an executive agency of the Department of Health, and a distinct delivery organisation with operational autonomy to advise and support government, local authorities and the NHS in a professionally independent manner.

Ramsar: Sites designated under the European Ramsar Convention which provide a framework for national and international co-operation to protect wetlands and their resources of international importance, particularly as waterfowl habitats.

Section 106 Agreement (S106): A legal agreement under Section 106 of the 1990 Town & Country Planning Act. Section 106 agreements are legal agreements made between a planning authority and a developer, or undertakings offered unilaterally by the developer, that ensure that extra works related to a development are undertaken.

Site of Special Scientific Interest (SSSIs): An SSSI is an area that has been identified under the Wildlife and Countryside Act 1981 as an area of special interest. Related to the natural heritage of wildlife habitats, geological or physiological features of the site.

Special Areas of Conservation (SACs): SACs are designated sites protected under the European Community Habitats Directive, to protect internationally important natural habitats and species.

Special Protection Areas (SPAs): SPAs are designated sites protected under the European Community Directive on the conservation of wild birds, also known as the Birds Directive.

Statement of Community Involvement (SCI): The statement of Community Involvement is an essential part of the new-look Local Development Framework. The SCI sets out the Council will involve the community at every stage in the preparation, alteration and production of the LDF. The SCI is not a development plan document but will still be subject to an independent examination.

Statement of Consultation (SoC): It is a legal requirement of the Town and Country Planning (Local Planning) (England) 2012 Regulations (SI No.767) that a Statement of Consultation accompanies the submission of the local plan to the Secretary of State. Regulation 22 of the regulations requires the statement to demonstrate:

- who was invited to make representations;
- how they were invited to do so;
- a summary of the main issues raised by the representations; and
- How these have been addressed in the Local Plan.

Strategic Flood Risk Assessment (SFRA): In accordance with advice from the Environment Agency and in line with Planning Policy statement 25: Development and Flood risk (PPS25), Councils are required to undertake a Strategic Flood Risk Assessment to inform preparation of the LDF and also to provide further details to developers of varying levels of flood risk within the area.

Strategic Housing Land Availability Assessment (SHLAA): SHLAA is a key component of the evidence base to support the delivery of sufficient land for housing to meet the communities need for more homes.

Strategic Location for Development (SLD): A strategic Location for Development is an area identified as a priority for large-scale mixed-use development.

Sustainability Appraisal (SA): These are required under new legislation and assess all the policies development plan. They include consideration of social and economic impacts as well as impacts on the environment.

Super Output Area (SOA): A SOA is a unit of geography designed for the collection and publication of small area statistics.

Use Class Order (UCO): The Town and Country Planning (Use Classes) Order 1987 (as amended) and the Town and Country Planning (General Permitted Development (England) Order 2015 puts uses of land and buildings into various categories. Planning permission is not required for changes of use within the same use class.

Use Class Order (UCO) from 6 April 2018 – 31 August 2020

- **A1 Shops** – Shops, post offices, travel agents, hairdressers, funeral directors, dry cleaner.
- **A2 Financial and professional services** – Banks, building societies, betting offices, and other financial and professional services.
- **A3 Food and drink** – Restaurants and cafes.
- **A4 Food and drink** – Hot food take-away.
- **B1 Business**
 - (b1a) Offices
 - (b1b) Research and development
 - (b1c) light industry appropriate in a residential area
- **B2 General Industrial**
- **B8 Distribution, including open air storage**
- **C1 Hotels** – Hotels, boarding and guest houses where no significant element of care is provided.
- **C2 Residential institutions** – Residential care homes, hospitals, nursing homes, boarding schools, residential colleges and training centres.
- **C3 Dwelling houses** – Family houses, or houses occupied by up to six residents living together as a single household, including a household where care is provided for residents.
- **D1 Non-residential institutions** – Surgeries, nurseries, day centres schools, art galleries, museums, libraries halls and also churches.
- **D2 Assembly and leisure** – Cinemas, concert halls, bingo and dance halls, casinos, swimming baths, skating rinks, gymnasiums or sports arenas (except for motor sport, or where firearms are used).

Use Class Order (UCO) from 1 September 2020

- **B2 General Industry**
- **B8 Storage and Distribution**
- **C1 Hotels** - Hotels, boarding and guesthouses (where no significant element of care is provided).
- **C2 Residential Institutions** - Residential care homes, hospitals, nursing homes, boarding schools, residential colleges and training centres.
- **C2a Secure Residential Institutions** – Prisons, young offenders’ institutions, detention centres, secure training centres etc.
- **C3 Dwelling houses** – Family houses, or houses occupied by up to six residents living together as a single household, including a household where care is provided for residents.
- **C4 Houses in Multiple Occupation**
- **E Commercial, Business and Service** – Previously Use Classes A1 (Shops (part)), A2 (Financial and professions services), A3 (Food and drink), B1 (Business a,b and c), D1 (Non-residential institutions (part)) and D2 (Assembly and leisure (part)).
- **F1 Learning and non-residential institutions** – Schools, non-residential education and training centres, museums, public libraries, public halls, exhibition halls, places of worship, law court.
- **Class F2 Local Community Uses** – Previously D2 (Non-residential institutions (part)) and A1 Shops (part).
- **Sui Generis (SG)** – Previously A4 (Pub or drinking establishment), A5 (Hot food takeaway), D2 (Assembly and leisure (part)) and Sui Generis (SG).

This page is intentionally left blank

By virtue of paragraph(s) 1 of Part 1 of Schedule 12A
of the Local Government Act 1972.

Document is Restricted

This page is intentionally left blank